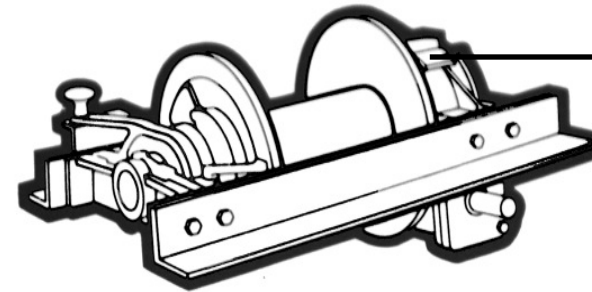
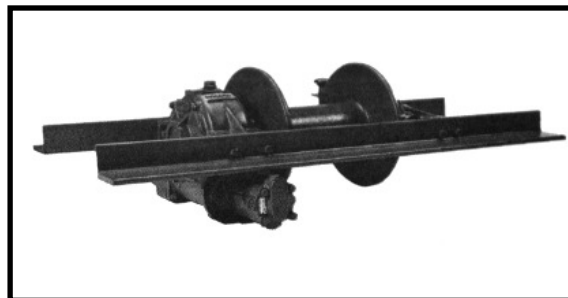


MATERIAL LIST

BRADEN®

AMU5-12F AMGU5-12F AHGU5-12F



Winch Model Number Winch Serial Number

Most Braden winches have a raised pad on the housing which is embossed with the model and serial numbers of the winch. Since both of these numbers are extremely important in the shipment of the proper replacement parts, your order should always reference these numbers.

FOR BEST RESULTS, USE ONLY FACTORY CERTIFIED REPLACEMENT PARTS

TO ORDER:

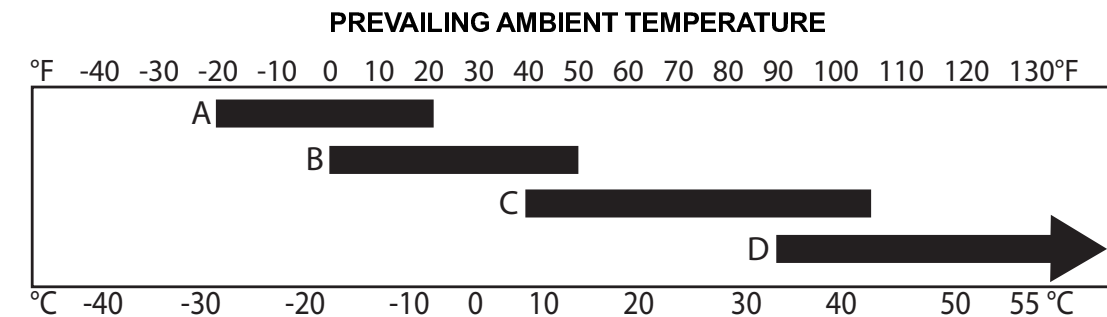
- 1) List model and serial numbers of the winch.
- 2) Refer to illustrations and select the component(s) needed and note item number.
- 3) Find item number on material list, show part number, description, and quantity on your order.
- 4) Refer to parts price list and show price for each component or assembly.

SPECIFICATIONS

Recommended Worm Gear Oil:

We have published the following specifications to help you determine which lubricant is best suited to your application. For simplicity, Braden has listed readily available products in each temperature range which has been tested and found to meet our specifications. This is not to say that other lubricant brands would not perform equally as well.

If the following lubricant brands are not available in your area, make certain your lubricant vendor supplies you with oil that is equivalent to those products listed below.



- A. AGMA Grade 3 EP; Mobilgear 600xp 100 or equivalent
- B. AGMA Grade 5 EP; Mobilgear 600xp 220 or equivalent
- C. AGMA Grade 7 EP; Mobilgear 600xp 460 or equivalent
- D. AGMA Grade 8 EP; Mobilgear 600xp 680 or equivalent

Brand recommendations in tier C climate range:

- MOBIL Mobilgear 600xp 460
- SHELL Omala 460
- CHEVRON Gear Compounds EP460
- TEXACO Meropa 460

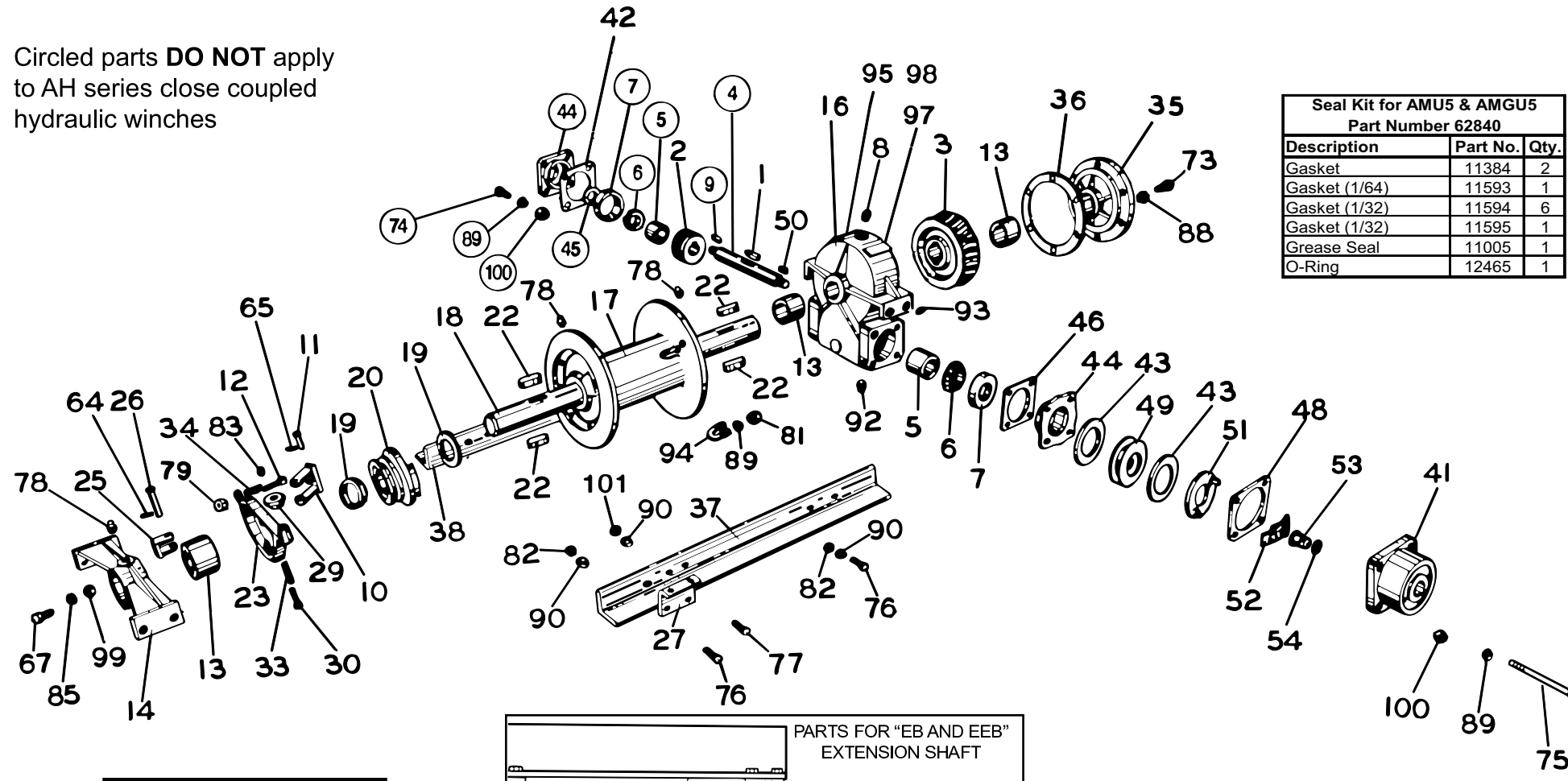
⚠ WARNING ⚠

Do not use aftermarket additives in worm gear oil. Some additives may contain substances which could cause glazing of brake discs or impede the firm locking action in the brake rotor assembly. Both symptoms could reduce load control which may result in property damage, severe personal injury or death.

PACCAR WINCH

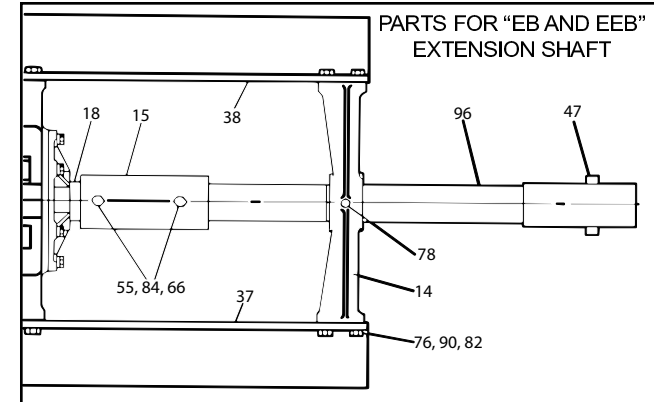
P.O. Box 547 Broken Arrow, OK 74013
Tel 918-251-8511 / Fax 918-259-1575
www.paccarwinch.com

Circled parts **DO NOT** apply to AH series close coupled hydraulic winches



**Seal Kit for AMU5 & AMGU5
 Part Number 62840**

Description	Part No.	Qty.
Gasket	11384	2
Gasket (1/64)	11593	1
Gasket (1/32)	11594	6
Gasket (1/32)	11595	1
Grease Seal	11005	1
O-Ring	12465	1

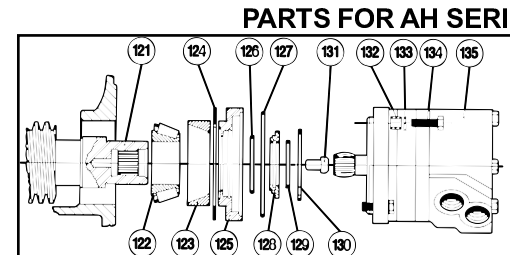


**Seal Kit for AHGU5
 Part Number 62830**

Description	Part No.	Qty.
Gasket	11384	2
Gasket (1/64)	11593	1
Gasket (1/32)	11594	6
Gasket (1/32)	11595	1
O-Ring	12465	1
O-Ring	26722	1
Quad Ring	26256	1
O-Ring	72718	1

MATERIALS LIST VARIABLES

ITEM	DESCRIPTION	AMU5 -12F PART NO.	AMGU5 -12F PART NO.	AMGU5 -12FEB PART NO.	AMGU5 -12FEEB PART NO.	QTY.
2	Worm, Right Hand	11585	11190	11190	11190	1
	Worm, Left Hand	11584	11189	11189	11189	1
3	Worm Gear, Right Hand	11379	11192	11192	11192	1
	Worm Gear, Left Hand	11378	11191	11191	11191	1
	Bushing	12968	12968	---	---	3
13	Bushing	---	---	12968	---	4
	Bushing	---	---	---	12968	5
	Bearing Leg Assy. (includes Item 13)	81073	81073	---	---	1
14	Bearing Leg Assy. (includes Item 13)	---	---	81073	---	2
	Bearing Leg Assy. (includes Item 13)	---	---	---	81073	3
	Coupling	---	---	22898	---	1
15	Coupling	---	---	---	22898	2
18	Cable Drum Shaft	11380	11380	13611	13611	1
37	Base Angle, Front	12911	22758	22760	22760	1
38	Base Angle, Rear	12912	22759	22761	22761	1
47	Capstan Pin	---	---	11980	---	1
	Capstan Pin	---	---	---	11980	2
55	Capscrew (5/8 - 18 X 4 NF G8 Z)	---	---	21685	---	2
	Capscrew (5/8 - 18 X 4 NF G8 Z)	---	---	---	21685	4
	Nut	---	---	22702	---	2
66	Nut	---	---	---	22702	4
	Capscrew (1/2 - 20 X 1-3/4 G8 Z)	22698	22698	---	---	8
76	Capscrew (1/2 - 20 X 1-3/4 G8 Z)	---	---	22698	---	12
	Capscrew (1/2 - 20 X 1-3/4 G8 Z)	---	---	---	22698	16
	Grease Fitting	18047	18047	---	---	3
78	Grease Fitting	---	---	18047	---	4
	Grease Fitting	---	---	---	18047	5
	Nut	22701	22701	---	---	8
82	Nut	---	---	22701	---	12
	Nut	---	---	---	22701	16
84	Lockwasher	---	---	102423	---	2
	Lockwasher	---	---	---	102423	4
	Lockwasher	11026	11026	---	---	9
90	Lockwasher	---	---	11026	---	13
	Lockwasher	---	---	---	11026	17
96	Extension Shaft	---	---	13613	---	1
	Extension Shaft	---	---	---	13613	2
97	SAE Plate	23246	23244	23244	23244	1



**MATERIAL LIST VARIABLES
 AH SERIES**

ITEM	DESCRIPTION	PART NO.	QTY.
121	Worm Shaft	26041	1
122	Bearing Cone	26258	1
123	Bearing Cup	26257	1
	Bearing Container Gasket	11593	1
	Bearing Container Gasket	11594	6
124	Bearing Container	26012	1
125	O-Ring	26722	1
127	O-Ring	72718	1
128	Seal Container	26255	1
129	Quad Ring	26256	1
130	Retaining Ring	25700	1
131	Rest Button	26263	1
133	Lockwasher (1/2)	11026	4
134	Capscrew (1/2 - 13 x 1-1/4 G8 Z)	104174	4
	Hydraulic Motor (Single Speed)	26310	1
135	Hydraulic Motor (Two Speed)	101166	1

BASIC MATERIAL LIST

ITEM	DESCRIPTION	PART NO.	QTY.
1	Worm Key	11606	1
4	Worm Shaft	23343	1
5	Spacer	11388	2
6	Bearing Cone	18006	2
7	Bearing Cup	18043	2
8	Plug	22775	1
9	Key	23367	1
10	Drag Brake Shoe	88010	1
11	Link Pin	18017	1
12	Link	18018	1
16	Worm Housing (includes Item 13)	81463	1
17	Cable Drum	11679	1
19	Retaining Ring	11002	2
20	Clutch	11685	1
22	Key	11004	4
23	Shifter Fork	11389	1
25	Bracket	11346	1
26	Pivot Pin	18021	1
27	Bracket	11390	1
29	Shifter Fork Handle	18022	1
30	Stem	11309	1
33	Spring	11310	1
34	Drag Brake Spring	18002	1
35	Worm Housing Cover (includes Item 13)	81072	1
36	Gasket	11384	2
41	Safety Brake Housing	11613	1
42	Gasket (1/64)	11593	1
43	Brake Disc	11979	2
44	Bearing Container	22756	2
45	Grease Seal	11005	1

BASIC MATERIAL LIST

ITEM	DESCRIPTION	PART NO.	QTY.
46	Gasket (1/32)	11594	6
48	Gasket (1/32)	11595	1
49	Rotor Assembly	81114	1
50	Key	18044	1
51	Pressure Plate	11610	1
52	Brake Spring Assembly (includes Item 53)	88006	1
53	Adjusting Nut	11599	1
54	O-Ring	12465	1
64	Cotter Pin	18008	1
65	Cotter Pin	11078	1
67	Capscrew (1/4 - 20 x 1-3/4 G8 Z)	21461	2
73	Capscrew (7/16 - 14 x 1 G8 Z)	21964	6
74	Capscrew (7/16 - 20 x 2 NF G8 Z)	23585	4
75	Capscrew (7/16 - 20 x 4-1/2 NF G8 Z)	23586	4
77	Capscrew (1/2 - 13 x 1-1/2 G8 Z)	104322	1
79	Nut (1/4 - 28 Jam)	13468	1
81	Nut (7/16 - 14)	13566	2
83	Washer (1/4)	11072	1
85	Lockwasher (1/4)	11015	2
88	Lockwasher (7/16 Ext. Tooth)	11014	6
89	Lockwasher (7/16)	11025	10
92	Drain Plug	19045	1
93	Pipe Plug	18009	1
94	Cable Clamp	11590	1
95	Warning Plate	23310	1
98	Drive Screw	11842	4
99	Nut (1/4 - 20)	11761	2
100	Nut (7/16 - 20)	12794	8
101	Nut (1/2 - 13)	101439	1

NOTE: Refer to "Material List Variables" for items not shown in Basic Material List.