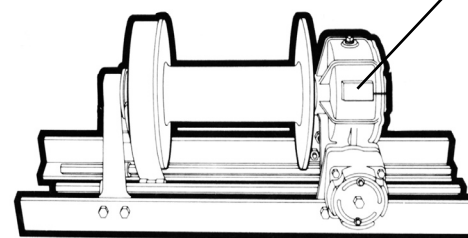
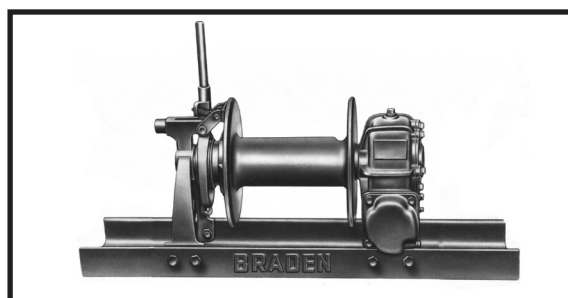


MATERIAL LIST

BRADEN

AMS3 AHS3



WINCH SERIAL NUMBER
WINCH MODEL NUMBER

Most Braden winches have a raised pad on the housing which is embossed with the model and serial numbers of the winch. Since both of these numbers are extremely important in the shipment of the proper replacement parts, your order should always reference these numbers.

FOR BEST RESULTS, USE ONLY FACTORY CERTIFIED REPLACEMENT PARTS

TO ORDER:

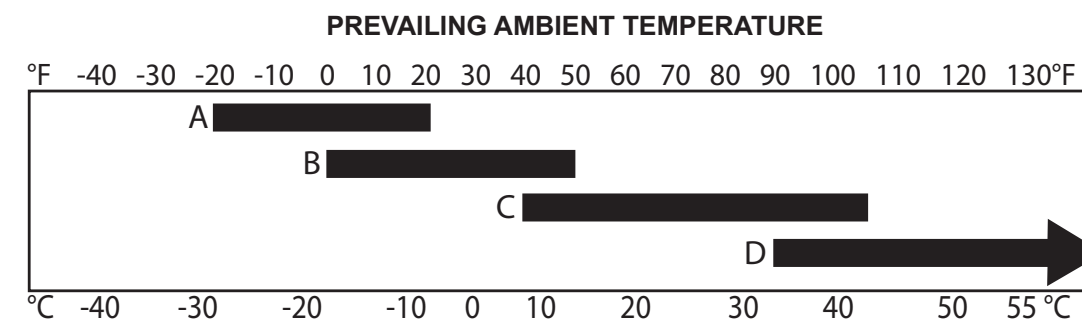
- 1) List model and serial numbers of the winch.
- 2) Refer to illustrations and select the component(s) needed and note item number.
- 3) Find item number on material list, show part number, description, and quantity on your order.
- 4) Refer to parts price list and show price for each component or assembly.

SPECIFICATIONS

Recommended Worm Gear Oil:

We have published the following specifications to help you determine which lubricant is best suited to your application. For simplicity, Braden has listed readily available products in each temperature range which has been tested and found to meet our specifications. This is not to say that other lubricant brands would not perform equally as well.

If the following lubricant brands are not available in your area, make certain your lubricant vendor supplies you with oil that is equivalent to those products listed below.



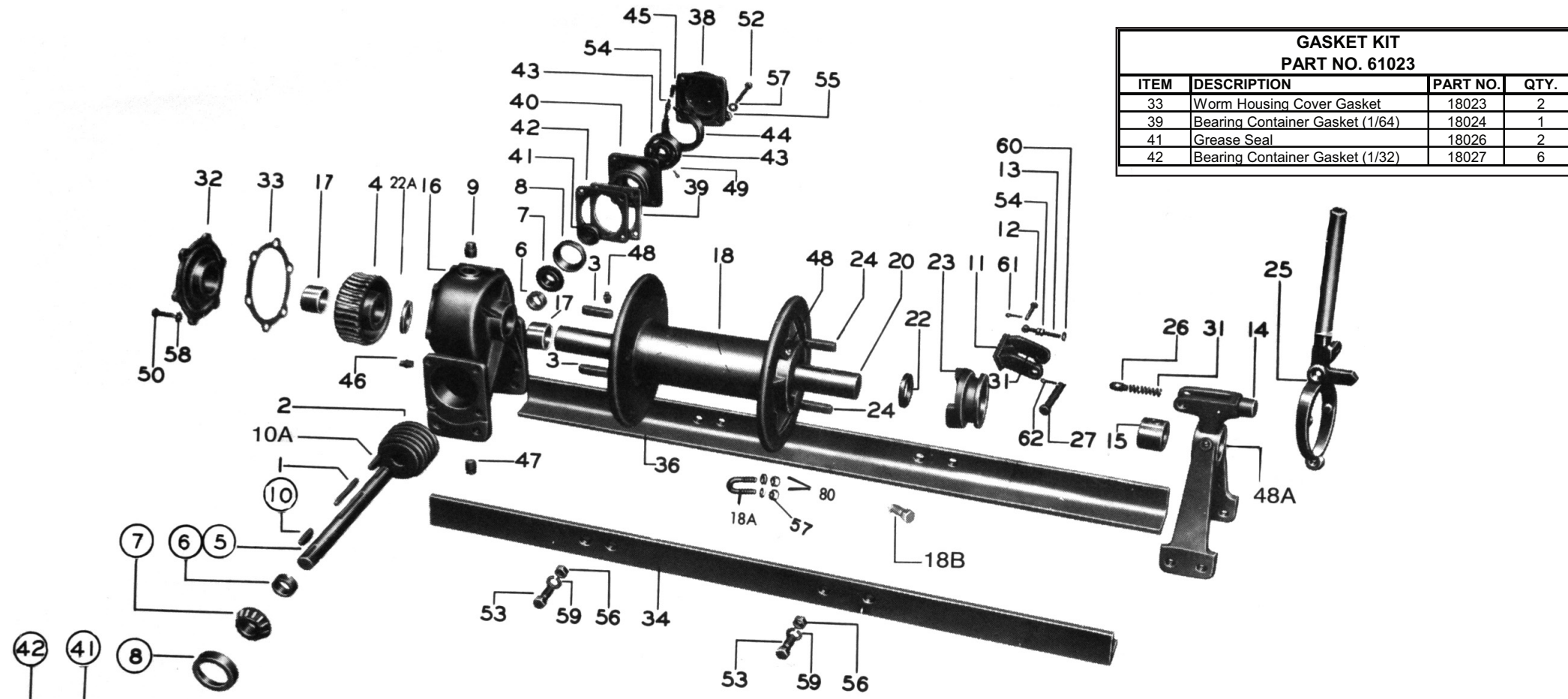
- A. AGMA Grade 3 EP; Mobilgear 600xp 100 or equivalent
- B. AGMA Grade 5 EP; Mobilgear 600xp 220 or equivalent
- C. AGMA Grade 7 EP; Mobilgear 600xp 460 or equivalent
- D. AGMA Grade 8 EP; Mobilgear 600xp 680 or equivalent

Brand recommendations in tier C climate range:

- MOBIL Mobilgear 600xp 460
- SHELL Omala 460
- CHEVRON Gear Compounds EP460
- TEXACO Meropa 460

⚠ WARNING ⚠

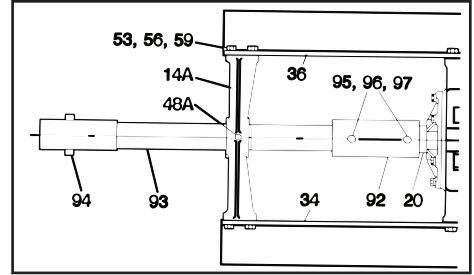
Do not use aftermarket additives in worm gear oil. Some additives may contain substances which could cause glazing of brake discs or impede the firm locking action in the brake rotor assembly. Both symptoms could reduce load control which may result in property damage, severe personal injury or death.



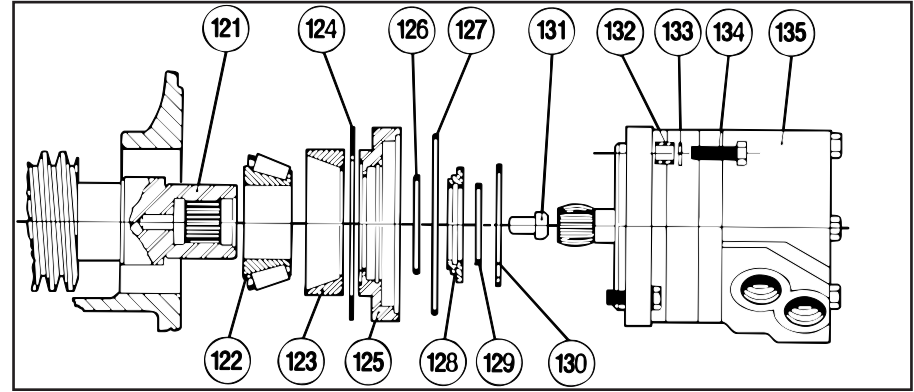
GASKET KIT PART NO. 61023			
ITEM	DESCRIPTION	PART NO.	QTY.
33	Worm Housing Cover Gasket	18023	2
39	Bearing Container Gasket (1/64)	18024	1
41	Grease Seal	18026	2
42	Bearing Container Gasket (1/32)	18027	6

Circled parts **DO NOT** apply to AH series close coupled hydraulic winches

PARTS FOR "EB AND EEB" EXTENSION SHAFT



PARTS FOR AH SERIES CLOSE COUPLED HYDRAULIC WINCHES



**BASIC MATERIAL LIST
AMS3-10 & AMS3-7**

ITEM	DESCRIPTION	PART NO.	QTY.
1	Key	18030	1
2	Worm, Right Hand	18012	1
	Worm, Left Hand	18011	1
3	Key	18020	2
4	Worm Gear, Right Hand	11238	1
	Worm Gear, Left Hand	11237	1
5	Worm Shaft:		
	Before April 18, 1975	18041	1
	After April 18, 1975	23470	1
6	Spacer	11308	2
7	Bearing Cone	18015	2
8	Bearing Cup	18016	2
9	Vent Plug	22775	1
10	Key	18044	1
10A	Key	10078	1
11	Brake Shoe Assembly:	88003	1
	Brake Shoe Lining	18075	1
	Brake Show Rivet	18076	2
12	Link Pin	18017	1
13	Link	18018	1
16	Worm Housing (Includes Item 17)	88008	1
17	Bushing	18078	2
18A	Cable Clamp (U-Bolt)	11513	1
18B	Cable Clamp (Setscrew)	12206	1
22	Retaining Ring	18019	1
22A	Thrust Ring	11240	1
23	Sliding Clutch	18039	1
24	Key	18020	2
25	Shifter Fork	22222	1
26	Poppet	18001	1
27	Pivot Pin	18021	1
31	Spring	18002	2
32	Cover	81037	1
33	Gasket	18023	1
38	Brake Housing	18032	1
39	Gasket	18024	1
40	Bearing Container	23303	2
41	Grease Seal	18026	2
42	Gasket	18027	4
43	Brake Drum	18028	1
44	Brake Band Assembly	21925	1
45	Brake Spring	18029	1
46	Pipe Plug	18009	1
47	Pipe Plug	18010	1
49	Setscrew	12075	1
50	Capscrew (3/8 - 16 x 1 G8 Z)	104309	6
51	Capscrew (3/8 - 16 x 2 G8 Z)	104136	4
52	Capscrew (3/8 - 16 x 1-3/4 G8 Z)	104311	4
54	Lock Nut	13468	6
55	Nut (3/8 - 16)	11780	8
57	Lockwasher (3/8 Plain)	27152	10
58	Lockwasher (3/8 Shakeproof)	11013	6
60	Plain Washer (1/4)	11072	1
61	Cotter Pin	11078	1
62	Cotter Pin	18008	1
80	Nut (3/8 - 16)	11780	2

MATERIAL LIST VARIABLES							
ITEM	DESCRIPTION	AMS3-7		AMS3-10		AMS3-10EB	
		PART NO.	QTY.	PART NO.	QTY.	PART NO.	QTY.
14	Bearing Leg Assembly (Includes Item 14A)	88007	1	88007	1	88007	1
14A	Bearing Leg Assembly (Includes Item 14)	---	---	---	---	88009	1
15	Bushing	18078	1	18078	1	18078	1
18	Cable Drum	23924	1	18040	1	18040	1
20	Cable Drum Shaft	11241	1	11239	1	22920	1
34	Front Base Angle:						
	Right Assembly Winch	22735	1	22737	1	22733	1
	Left Assembly Winch	22735	1	22737	1	22739	1
36	Rear Base Angle:						
	Right Assembly Winch	22736	1	22738	1	22734	1
	Left Assembly Winch	22736	1	22738	1	22749	1
48	Grease Fitting	18047	2	11799	2	11799	2
48A	Grease Fitting	18047	1	18047	1	18047	2
53	Capscrew (1/2 - 13 x 1-3/4 G8 Z)	104323	8	104323	8	104323	12
56	Nut (1/2 - 13)	101439	8	101439	8	101439	12
59	Lockwasher (1/2)	11026	8	11026	8	11026	12
92	Coupling	---	---	---	---	22921	1
93	Extension Shaft	---	---	---	---	13625	1
94	Capstan Pin	---	---	---	---	11980	1
95	Capscrew (1/2 - 20 x 3-1/2 NF G8 Z)	---	---	---	---	21686	2
96	Hex Nut (1/2 - 20)	---	---	---	---	22701	2
97	Washer (1/2 Shakeproof)	---	---	---	---	12781	2

AH SERIES PARTS

ITEM	DESCRIPTION	PART NO.	QTY.
121	Worm Shaft	26020	1
122	Bearing Cone	26258	1
123	Bearing Cup	26257	1
124	Gasket	18027	1
125	Bearing Container	26017	1
126	O'Ring	26722	1
127	O'Ring	72718	1
128	Seal Container	26255	1
129	Quad Ring	26256	1
130	Retaining Ring	25700	1
131	Rest Button	26263	1
132	Bushing	26351	4
133	Lockwasher (3/8 Plain)	27152	4
134	Capscrew (3/8 - 16 x 2-1/4 G8 Z)	104134	4
135	Hydraulic Motor (Single Speed)	26311	1
	Hydraulic Motor (Two Speed)	101165	1