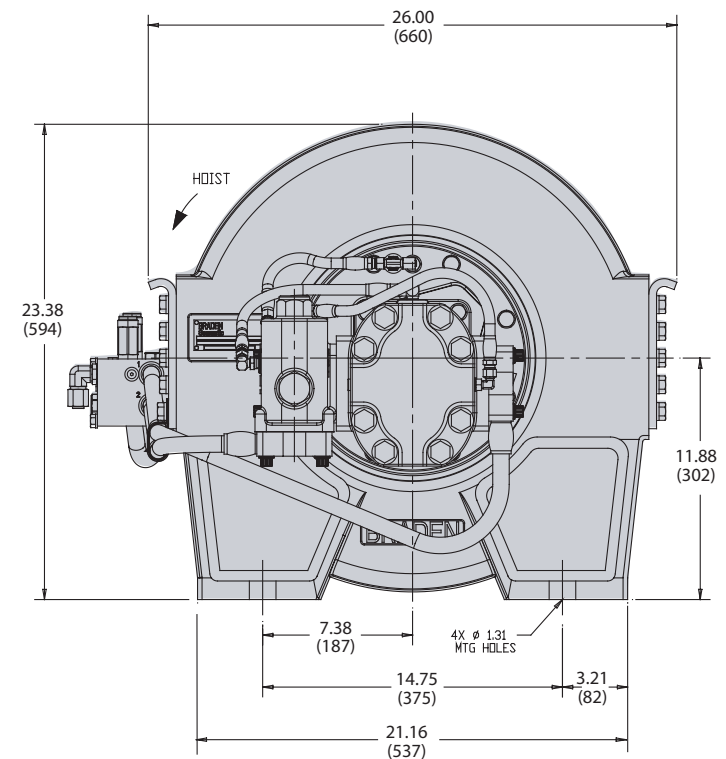
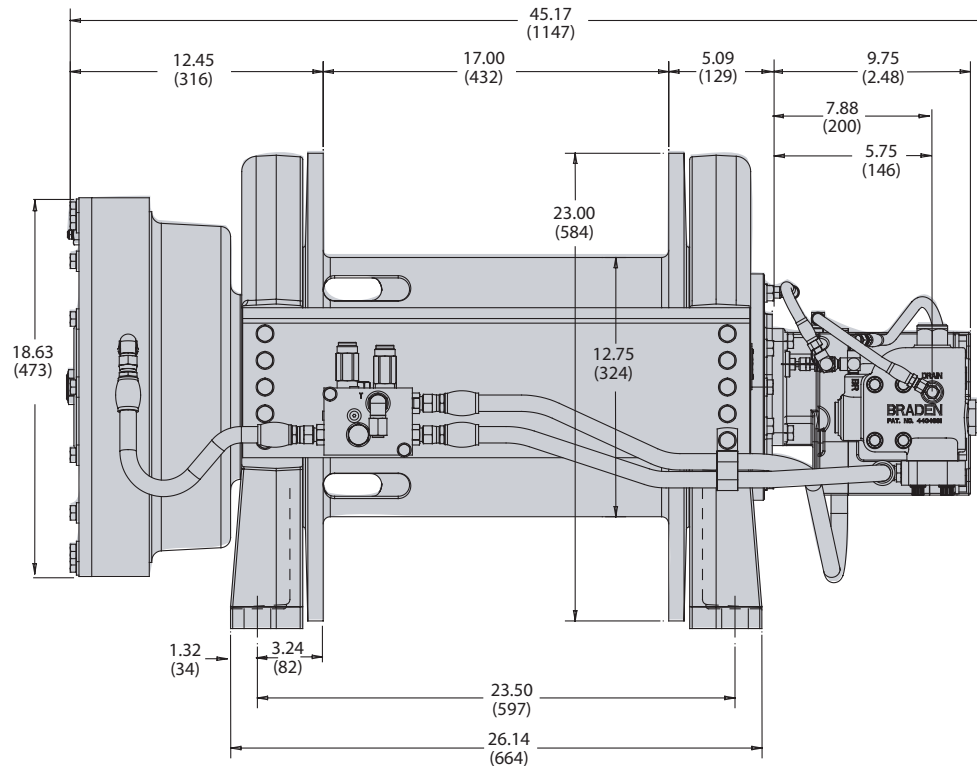


CH165A-AB

13,700 LB First Layer Line Pull

BRADEN®

DIMENSIONAL INFORMATION



HOIST FEATURES

- High Efficiency Planetary Gearing
- Optional Hydraulic Motor Sizes
- High Capacity Overrunning Clutch
- Patented Braden Brake Valve for Smooth Operation

AUXILIARY BRAKE FEATURES

- Completely enclosed, allowing all parts to run in oil
- No periodic adjustment required
- All components are protected from exposure to the environment
- Easy to service and test

PACCAR WINCH DIVISION
P.O. BOX 547 BROKEN ARROW, OK U.S.A. 74013
PHONE (918) 251-8511 FAX (918) 259-1575
www.paccarwinch.com

PERFORMANCE INFORMATION

120 MOTOR - 01 DRUM							
12.03 CU. IN. DISP. - 2500 PSI @ 170 GPM (197 CC DISP. - 171 BAR @ 643 LPM)							
ROPE SIZE (IN)	LAYER	LINE PULL		LINE SPEED		ROPE CAPACITY	
		(LBS)	(KG)	(FPM)	(MPM)	(FT)	(M)
3/4	1	13,730	6,241	434	132	80	24
	2	12,360	5,618	482	147	169	52
	3	11,240	5,109	530	162	266	81
	4	10,300	4,682	579	176	372	113
	5	9,510	4,323	627	191	487	148
	6	8,830	4,014	675	206	611	186

MINIMUM FLOW RECOMMENDATION FOR SMOOTH OPERATION
(RECOMMENDED MINIMUM **SYSTEM** FLOW SHOULD BE 2X THESE VALUES)

MOTOR	GPM	LPM
120	28	106

OPTIONS

Consult the factory for high pressure piston motors.

⚠ WARNING ⚠

A minimum of 5 wraps of wire rope must be left on the drum to prevent the load from being supported by the wire rope anchor alone. Since the wire rope anchor is not designed to hold the rated load, failure to leave 5 wraps of wire rope on the drum could cause the load to drop, which could result in property damage, injury or death.

NOTES

Specifications are subject to change without notification and without incurring obligation.

Pressure and flow shown are the maximum allowable for the particular combination of winch, ratio, motor and drum.

Specifications in this publication are theoretical and may vary depending on hydraulic system, environment, etc.

Line pulls are maximum ratings for the winch only. Wire rope ratings may be lower than the winch rating. Consult the wire rope manufacturer for ratings.

HYDRAULIC CIRCUIT

