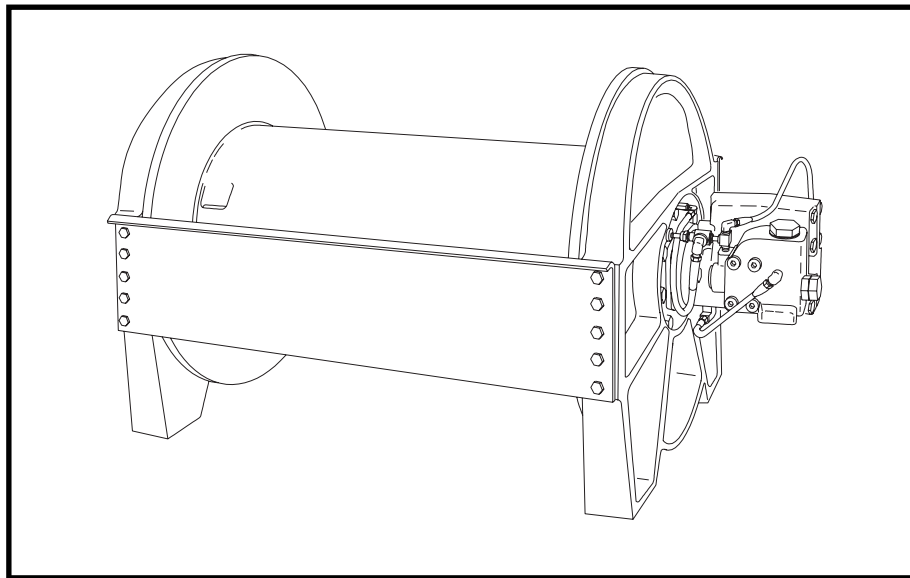


# BRADEN<sup>®</sup>

## 2nd-GENERATION CH SERIES PLANETARY HOIST CH150A, CH175A, CH185A, & CH230A

# PARTS LIST



**WRITE HOIST SERIAL NUMBER BELOW**

--	--	--	--	--	--	--	--



**First 2 numbers indicate  
year manufactured**

For serial number location see page 2

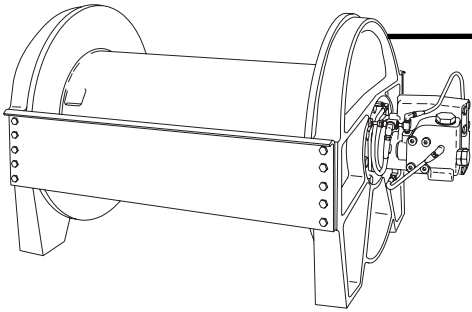
**BRADEN<sup>®</sup>**  
**CARCO<sup>®</sup>**  
**Gearmatic<sup>®</sup>**

**PACCAR WINCH**  
800 East Dallas Street  
Broken Arrow, OK 74012  
918-251-8511

# EXPLANATION OF MODEL NUMBER

---

---



## WINCH MODEL NUMBER

## WINCH SERIAL NUMBER

The hoist model number and serial number are stamped into the top of the motor side end plate. Both of these numbers are extremely important in the shipment of the proper replacement parts, and your order should always reference them.

**CH 150 A - 23 090 - 01 - 1**

CONSTRUCTION HOIST    MAX RATING    DESIGN MODEL    GEAR RATIO    MOTOR SIZE    DRUM SIZE    OPTIONS

CH	DESIGNATES CONSTRUCTION HOIST (C2H DESIGNATES TWO SPEED)
150	DESIGNATES 15,000 LB FIRST LAYER LINE PULL
A	DESIGNATES THE MODEL SERIES RELATING TO DESIGN CHANGES
23	DESIGNATES TOTAL GEAR REDUCTION
090	DESIGNATES HYDRAULIC MOTOR DISPLACEMENT IN CU IN/REV (DECIMAL POINT ELIMINATED EXAMPLE 090 = 9.0 CU IN/REV)
01	DESIGNATES THE DRUM OPTION
1	PERMITS TESTING AND INSPECTION PER API 2C FOR OFFSHORE CRANES
P	EQUIPPED WITH RATCHET & PAWL SYSTEM
AB	EQUIPPED WITH AUXILARY BRAKE

### TO ORDER PARTS -

- (1) List model and serial numbers of the hoist.
- (2) Refer to exploded view and select the component(s) needed and note item number.
- (3) Find item number on material list, show part number, description and quantity required on your order.

## RECOMMENDED PLANETARY GEAR OIL

Field experience, supported by engineering endurance tests, indicates the use of the proper gear oil and a program of regular preventive maintenance will help provide extended gear train life and reliable hoist brake performance. For this reason, BRADEN has published the following specifications to assist in determining which lubricant is best suited to your application.

For simplicity, BRADEN has listed available products in each temperature range that have been tested and found to meet our specifications. This is not to say that other lubricant brands would not perform equally as well.

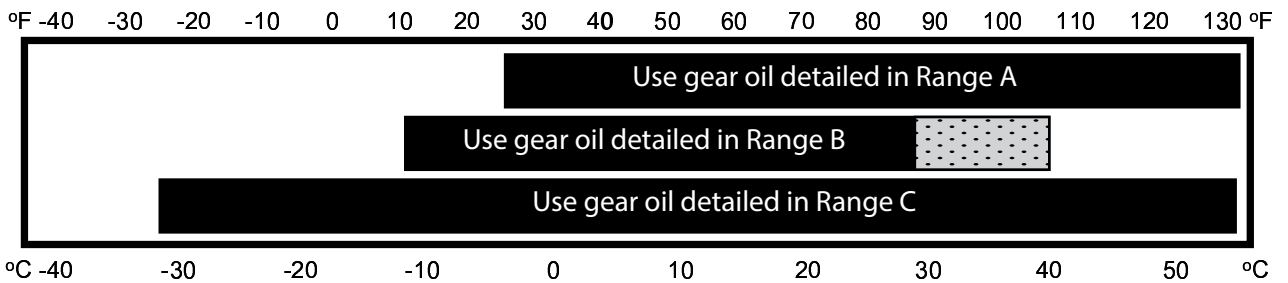
If the following lubricant brands are not available in your area, make certain your lubricant vendor supplies you with oil equivalent to those products listed below.

### ⚠ WARNING ⚠

Failure to use the proper type and viscosity of planetary gear oil may contribute to intermittent brake clutch slippage, which could result in property damage, severe personal injury, or death. Some gear lubricants contain large amounts of EP (Extreme Pressure) and anti-friction additives, which may contribute to brake clutch slippage or damage to brake friction discs or seals. **NOTE: DO NOT use oil that is labeled as meeting "API Service GL-5."** Oil viscosity, affected by ambient temperature, is also critical to reliable brake clutch operation. Our tests indicate excessively heavy or thick gear oil may contribute to intermittent brake clutch slippage. Make certain the gear oil viscosity used in your hoist is correct for your prevailing ambient temperature.

### RECOMMENDED GEAR OIL

#### PREVAILING AMBIENT TEMPERATURE



SHADED TEMPERATURE RANGE IN THE CHART ABOVE NOT RECOMMENDED FOR SEVERE APPLICATIONS SUCH AS SUSTAINED FAST DUTY CYCLES OR FREQUENT WINCHING.

Winches are factory filled with Mobilgear 600 XP 150 or equivalent. Consult your oil supplier for other equivalent oils if required.

	Mobil	Shell	Chevron	Texaco
Range A	Mobilgear 600 XP 220	Omala S2 G 220	Gear Compounds EP 220	Meropa 220
Range B	Mobilgear 600 XP 150	Omala S2 G 150	Gear Compounds EP 150	Meropa 150
Range C	Mobilgear SHC 150	Omala S4 GX 150		

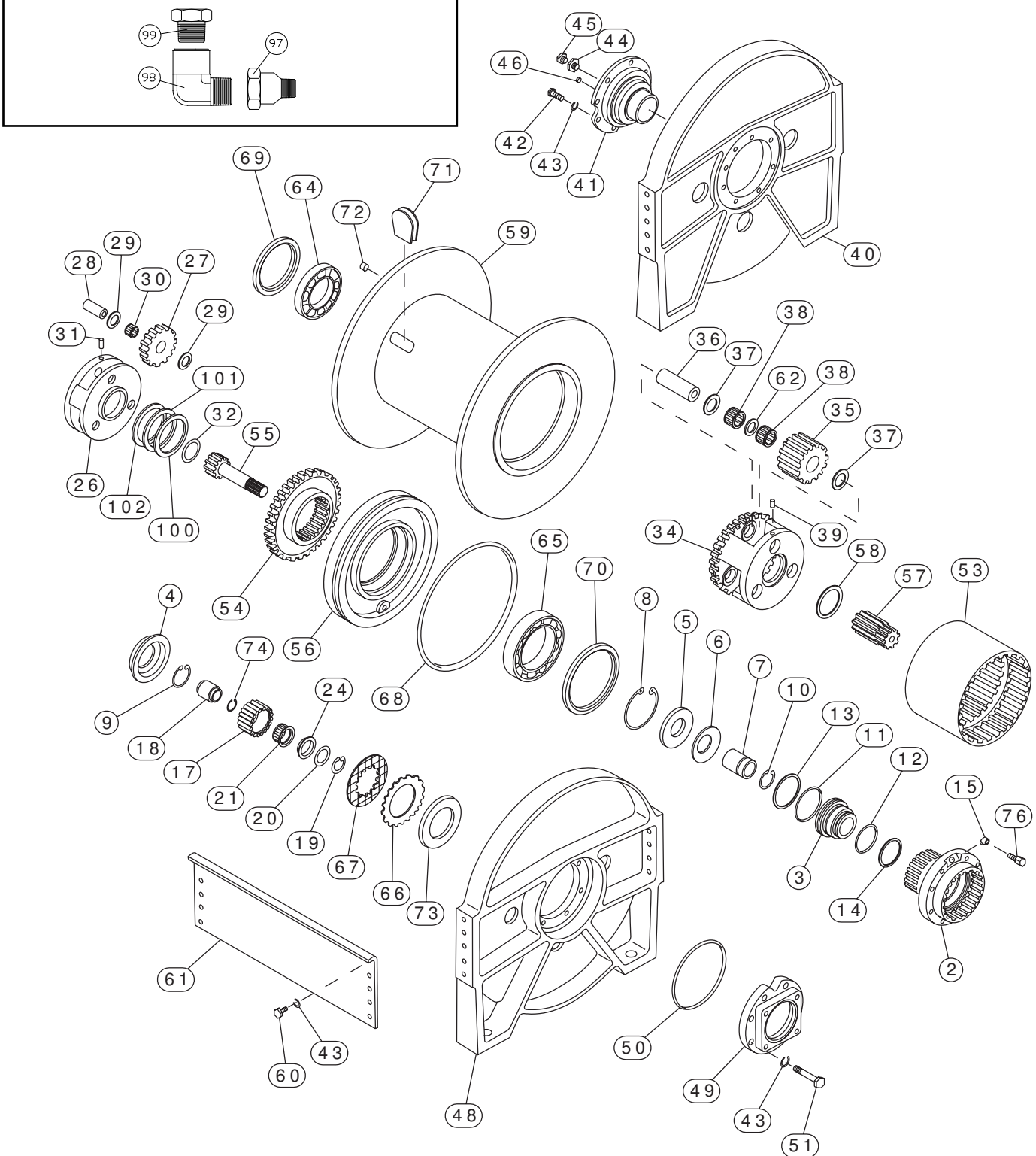
### ⚠ WARNING ⚠

Failure to properly warm up the winch, particularly under low ambient temperature conditions, may result in temporary brake slippage due to high back pressures attempting to release the brake, which could result in property damage, severe personal injury or death.

If you have any questions regarding this bulletin or your BRADEN planetary winch, please contact the BRADEN Product Support Department at 1-918-251-8511, Monday through Friday from 08:00 to 16:30 hours CST, or by fax at 1-918-259-1575.

# COMPONENTS

ON -1 HOISTS BUILT PRIOR TO JUNE 1992, EQUIPPED WITH PARTS SHOW BELOW. REPLACE ITEM 46. -1 UNITS AFTER JUNE 1992, USE SIGHT GLASS P.N. 70193.



**NOTE:** Serial numbers 8203197 and 8203198 (CH 150) and 8203199, 8203200, 8203201, 8203202, 8203195, 8203196 and 8203193, (CH 175) are equipped with brake/clutch assembly 81615. All other serial numbers are equipped with brake/clutch assembly 81644 (item numbers 17, 18, 19, 20, 21, 24 and 74). Contact the BRADEN Service Department for repair parts if you have one of the above listed serial numbers.

# COMPONENTS

## BRAKE CYLINDER ASSY 81614

ITEM	DESCRIPTION	PART NO.	QTY.
2	BRAKE CYLINDER	24448	1
3	BRAKE PISTON	24439	1
4	BRAKE PISTON PLATE	24438	1
5	BACKUP PLATE	24463	1
6	BELLEVILLE SPRING	101416	8
7	SPRING GUIDE	24454	1
8	RETAINING RING	24474	1
9	RETAINING RING	13031	1
10	RETAINING RING	23486	1
11	O-RING	24475	1
12	O-RING	24476	1
13	BACK-UP RING	24477	1
14	BACK-UP RING	24478	1
15	ELBOW 45° - 1/8 NPT	13709	1

## BRAKE CLUTCH ASSY 81644 (SAE C SPLINE 14 TOOTH)

ITEM	DESCRIPTION	PART NO.	QTY.
17	OUTER BRAKE RACE*	NSS	1
18	INNER BRAKE RACE*	NSS	1
19	RETAINING RING	24866	2
20	BRAKE CLUTCH BEARING RETAINER	24862	2
21	BRAKE CLUTCH	NSS	1
24	BRAKE CLUTCH BEARING	27684	2
74	RETAINING RING	24506	1

\*NSS - Not serviced separately, order entire brake clutch assembly no. 81644

## BASIC MATERIAL LIST

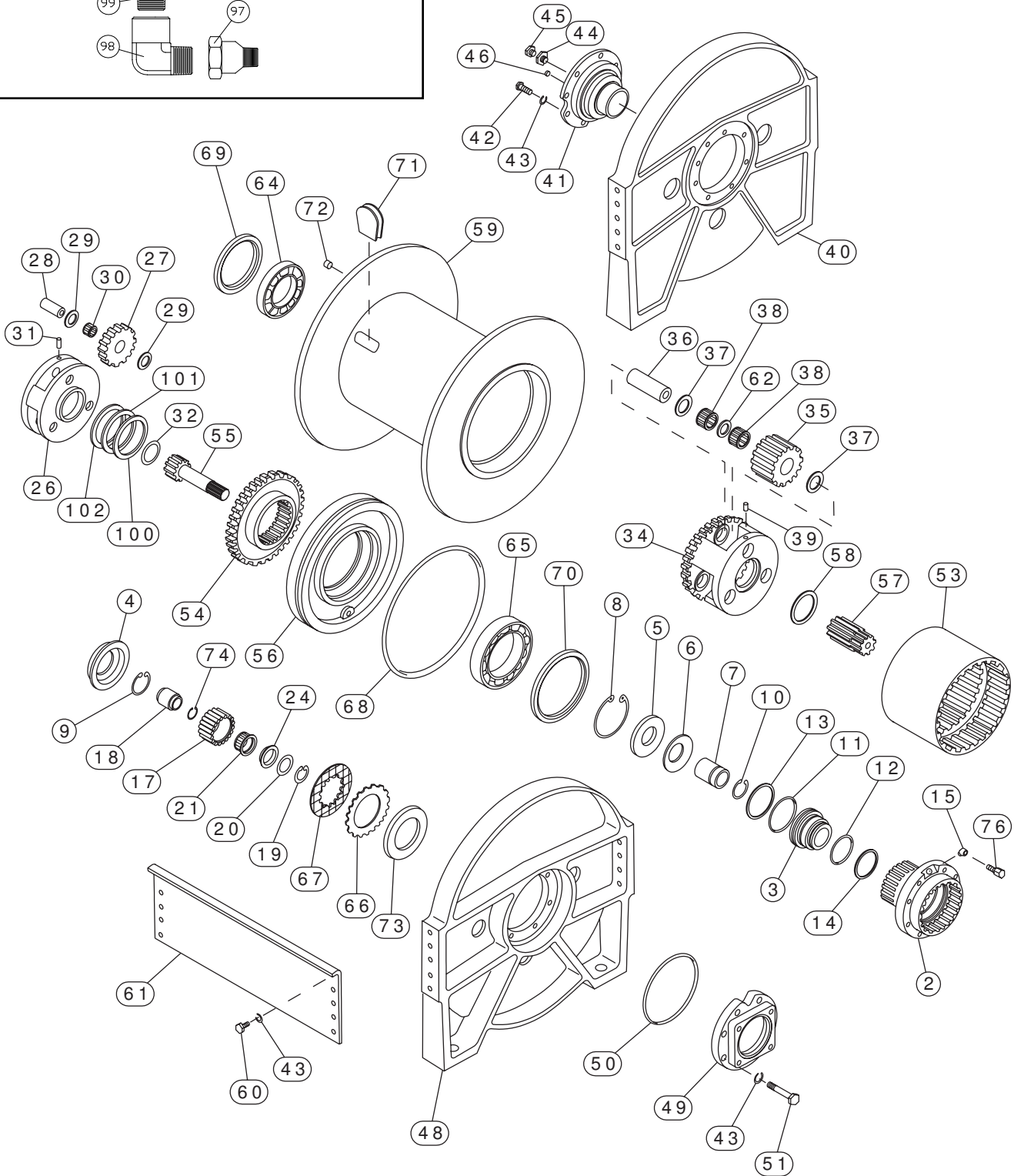
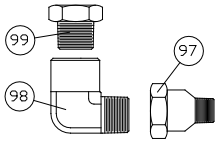
ITEM	DESCRIPTION	PART NO.	QTY.
31	SPIROL PIN	24113	3
41	BEARING SUPPORT	24453	1
42	CAPSCREW (1/2 - 13 X 1 1/2 GD8Z)	104322	8
44	REDUCER BUSHING	18066	1
45	VENT RELIEF VALVE	18062	1
46	SIGHT GLASS	70193	1
49	MOTOR ADAPTER	24466	1
50	O-RING	24484	1
51	BRAKE CYLINDER CAPSCREW-SPECIAL	24455	8
64	BALL BEARING	24486	1
65	BALL BEARING	24487	1
66	BRAKE DISC	24490	10
67	FRICTION DISC	25530	9
69	OIL SEAL	23834	1
70	OIL SEAL	10427	1
72	PLUG (1/2 - 14NPT - PRIOR TO 1994)	19045	1
72	PLUG (-8 ORB 1994 & AFTER)	32411	1
73	BRAKE PLATE SPACER	24489	1
76	NIPPLE (1/8 NPT)	25038	1
97**	PIPE THREAD ADAPTER -4 TO -2	25159	1
98**	PIPE ELBOW -4 TO -4	25160	1
99**	PIPE PLUG	19034	1
100**	BEARING RACE (.092 INCHES THICK)	22351	1
101**	THRUST BEARING	18050	1
102**	BEARING RACE (.063 INCHES THICK)	26291	1

\*\* Used on hoists built prior to June 1992

\*\*\*Design revision, not in all models. Also requires revised items 26 & 28

# COMPONENTS

ON -1 HOISTS BUILT PRIOR TO JUNE 1992, PARTS SHOW BELOW REPLACE ITEM 46. -1 UNITS AFTER JUNE 1992, USE SIGHT GLASS P.N. 70193.



**NOTE:** Serial numbers 8203197 and 8203198 (CH 150) and 8203199, 8203200, 8203201, 8203202, 8203195, 8203196 and 8203193, (CH 175) are equipped with brake/clutch assembly 81615. All other serial numbers are equipped with brake/clutch assembly 81644 (item numbers 17, 18, 19, 20, 21, 24 and 74). Contact the BRADEN Service Department for repair parts if you have one of the above listed serial numbers.

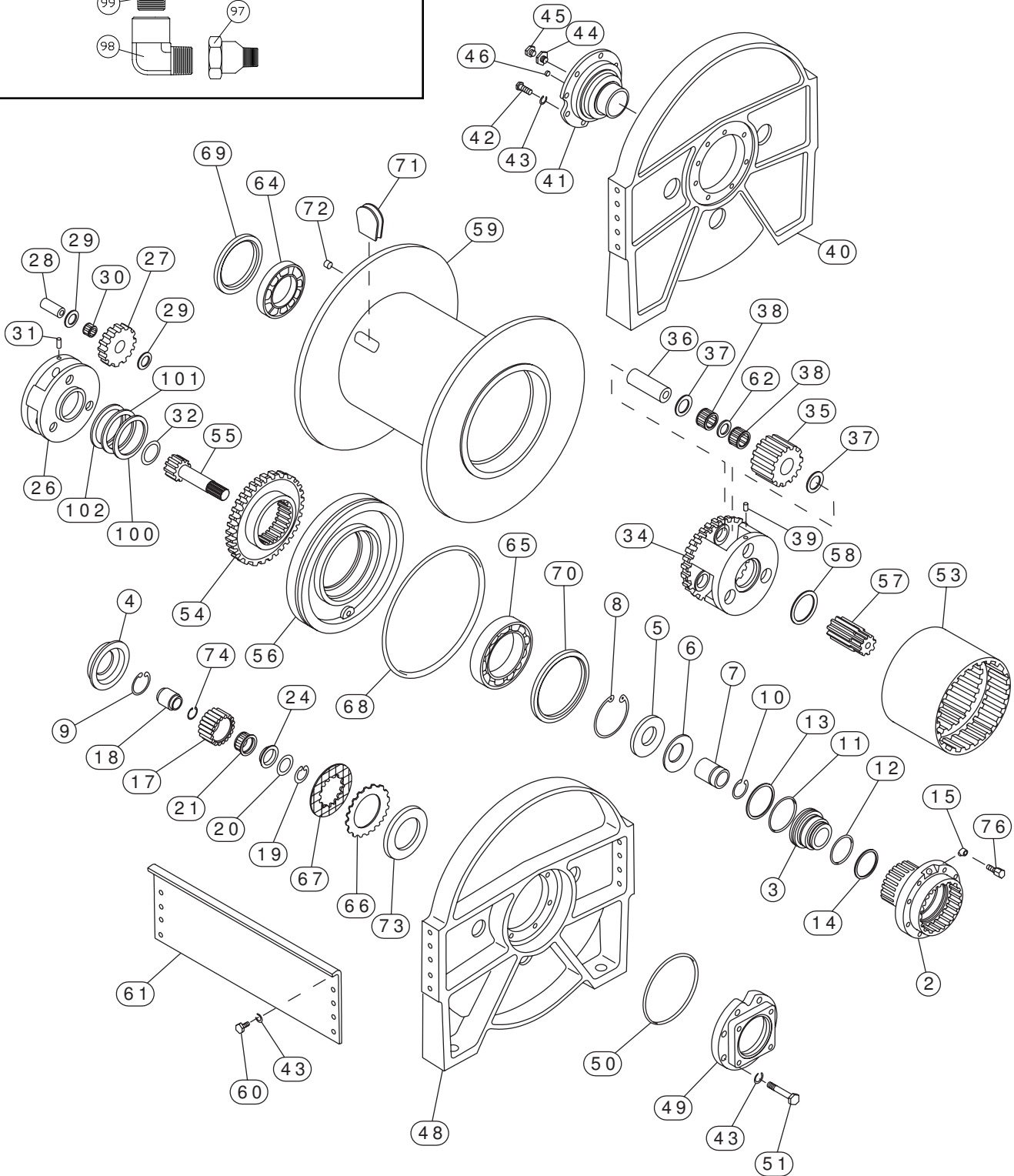
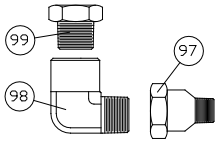
# COMPONENTS

## MATERIAL LIST VARIABLES

ITEM	DESCRIPTION	CH150A & C2H150A		CH175A & C2H175A		CH 185A & C2H185A		CH230A & C2H230A	
		QTY	PART NO	QTY	PART NO	QTY	PART NO	QTY	PART NO
26	PRIMARY PLANET CARRIER (REVISED)	1	26292	1	26292	1	26293	1	26293
	PRIMARY PLANET CARRIER (OLD)	1	24447	1	24447	1	24567	1	24567
27	PRIMARY PLANET GEAR	3	40021	3	40021	3	24575	3	24575
28	PRIMARY PLANET GEAR SHAFT (REVISED)	3	26294 (1.682 IN.)	3	26294 (1.682 IN.)	3	26295 (2.272 IN.)	3	26295 (2.272 IN.)
	PRIMARY PLANET GEAR SHAFT (OLD)	3	25561	3	24461	3	24572	3	24572
29	THRUST WASHER	6	24479	6	24479	6	24167	6	24167
30	ROLLER BEARING	3	24480	3	24480	3	24579	3	24579
32	THRUST WASHER	1	24481	1	24481	1	24581	1	24581
34	OUTPUT PLANET CARRIER					1	24568	1	24568
	S/N BELOW 8401827	1	24441	1	24441				
	S/N ABOVE 8401826	1	25291	1	25291				
35	OUTPUT PLANET GEAR					3	24576	3	24576
	S/N BELOW 8401827	3	24443	3	24443				
	S/N ABOVE 8401826	3	25288	3	25288				
36	OUTPUT PLANET GEAR SHAFT					3	24573	3	24573
	S/N BELOW 8401827	3	24462	3	24462				
	S/N ABOVE 8401826	3	25289	3	25289				
37	THRUST WASHER					6	11894	6	11894
	S/N BELOW 8401827	6	24482	6	24482				
	S/N ABOVE 8401826	6	11932	6	11932				
38	ROLLER BEARING					6	24580	6	24580
	S/N BELOW 8401827	6	24483	6	34483				
	S/N ABOVE 8401826	6	25292	6	25292				
39	SPIROL PIN	3	24113	3	24113	3	24582	3	24582
40	SUPPORT END PLATE (W/O AUX BRAKE)	1	24468	1	24452	1	24591	1	24468
	SUPPORT END PLATE (W/ AUX BRAKE)	1	104183	1	105153			1	104183
43	LOCKWASHER (1/2)	32	11026	36	11026	36	11026	32	11026
48	MOTOR END PLATE	1	24467	1	24451	1	24590	1	24467
53	RING GEAR	1	105254	1	105272	1	29746	1	29747
54	RING GEAR ADAPTER	1	29391	1	29391	1	24569	1	24569
55	PRIMARY SUM GEAR	1	24445	1	24445	1	24577	1	24577
56	CABLE DRUM CLOSURE	1	24464	1	24465	1	24587	1	24464
57	OUTPUT SUN GEAR	1	24444	1	24444	1	24571	1	24571
58	THRUST WASHER	1	24485	1	24485	1	24485	1	24485

# COMPONENTS

ON -1 HOISTS BUILT PRIOR TO JUNE 1992, PARTS SHOW BELOW REPLACE ITEM 46. -1 UNITS AFTER JUNE 1992, USE SIGHT GLASS P.N. 70193.



**NOTE:** Serial numbers 8203197 and 8203198 (CH 150) and 8203199, 8203200, 8203201, 8203202, 8203195, 8203196 and 8203193, (CH 175) are equipped with brake/clutch assembly 81615. All other serial numbers are equipped with brake/clutch assembly 81644 (item numbers 17, 18, 19, 20, 21, 24 and 74). Contact the BRADEN Service Department for repair parts if you have one of the above listed serial numbers.



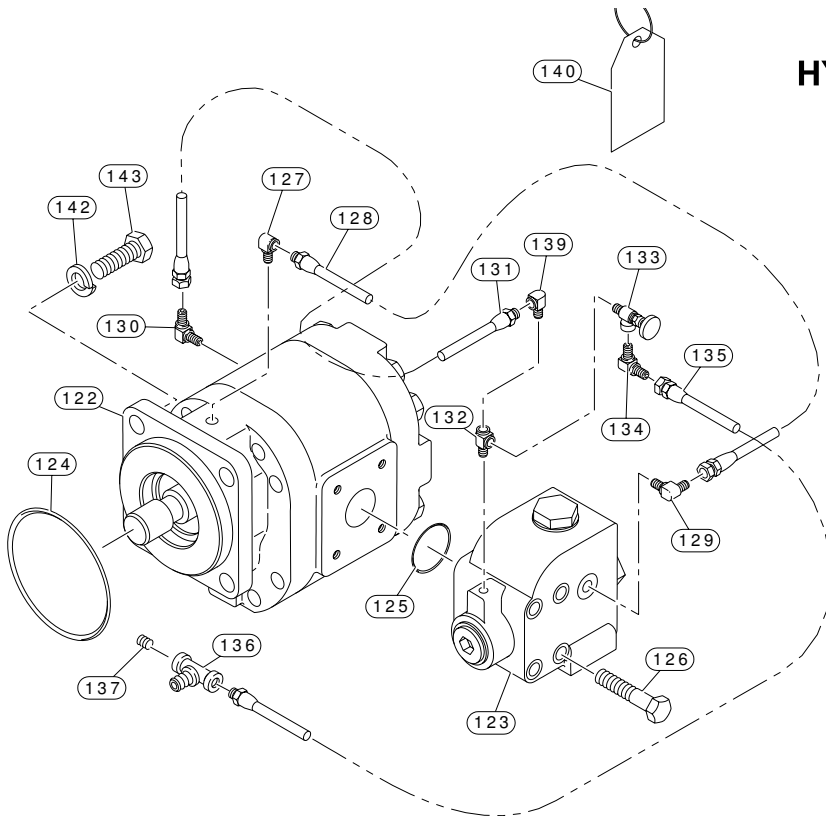
# COMPONENTS

## MATERIAL LIST VARIABLES

ITEM	DESCRIPTION	CH150A & C2H150A		CH175A & C2H175A		CH 185A & C2H185A		CH230A & C2H230A	
		QTY	PART NO	QTY	PART NO	QTY	PART NO	QTY	PART NO
59	CABLE DRUM (W/O AUX BRAKE) 01 DRUM	1	24460	1	24505	1	27457	1	24578
	CABLE DRUM (W/O AUX BRAKE) 02 DRUM	1	29375	1	100314	1	27479		
	CABLE DRUM (W/O AUX BRAKE) 21 DRUM			1	100720			1	B755C
	CABLE DRUM (W/ AUX BRAKE) 01 DRUM	1	83211 Assy	1	83285 Assy			1	104180 Assy
	CABLE DRUM (W/ AUX BRAKE) 02 DRUM	1	83212 Assy	1	83273 Assy				
	CABLE DRUM (W/ AUX BRAKE) 21 DRUM							1	104241
60	BASE CAPSCREW	16	103314	16	103314	20	103314	20	103314
61	TIE PLATE (W/O AUX BRAKE) 01 DRUM	2	24471	2	24472	2	24584	2	24471
	TIE PLATE (W/O AUX BRAKE) 02 DRUM	2	29376	2	29376	2	25174		
	TIE PLATE (W/O AUX BRAKE) 21 DRUM			2	24472			2	B755F
	TIE PLATE (W/ AUX BRAKE) 01 DRUM	2	24471	2	24472			2	24471
	TIE PLATE (W/ AUX BRAKE) 02 DRUM	2	29376	2	29376				
	TIE PLATE (W/ AUX BRAKE) 21 DRUM							2	B755F
62	BEARING SPACER								
	S/N BELOW 8401827	3	24457	3	24457				
	S/N ABOVE 8401826	3	25290	3	25290				
68	O-RING	1	24773	1	24772	1	24592	1	24773
71	CABLE WEDGE	1	24493	1	24492	1	24493	1	24494

# BRADEN 2nd GENERATION -1 MOTOR GROUPS

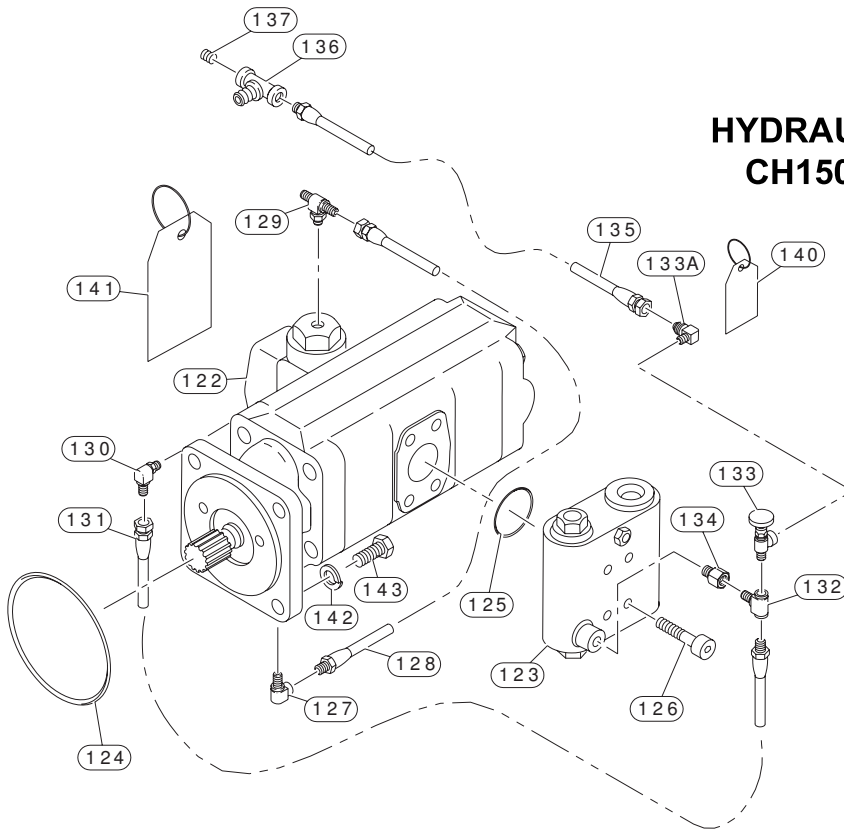
## SINGLE-SPEED MOTOR HYDRAULIC MOTOR SUBASSEMBLIES CH150A, CH175A, CH185A & CH230A



ITEM	DESCRIPTION	PART NO.	QTY.
122	9 CUBIC INCH HYDRAULIC MOTOR	25272	1
122	11 CUBIC INCH HYDRAULIC MOTOR	25273	1
122	12 CUBIC INCH HYDRAULIC MOTOR	25274	1
123	BRAKE VALVE	81609	1
124	O-RING	10330	1
125	O-RING	13542	1
126	CAPSCREW (1/2 - 13 X 4 1/2 G5 SOCKET HD)	23690	4
127	REDUCER-ELBOW	24236	1
128	HOSE ASSEMBLY	13705	1
129	ELBOW (1/8 NPT -4 JIC)	21163	1
130	ELBOW (-4JIC)	25302	1
131	HOSE ASSEMBLY (-4 JIC, 1/8 NPT)	13706	1
132	TEE (1/8 NPT)	23769	1
133	NEEDLE VALVE	25258	1
134	ELBOW (1/8 NPT -4 JIC)	21163	1
135	HOSE ASSEMBLY (-4 JIC, 1/8 NPT)	13705	1
136	TEE-MALE BRANCH (1/8 NPT)	22934	1
137	PIPE PLUG (1/8 NPT)	22374	1
139	ELBOW (1/8 NPT)	13708	1
140	WARNING TAG	25257	1
142	LOCKWASHER (1/2)	11026	4
143	CAPSCREW (1/2 - 13 X 1 1/2 G8 Z)	104322	4

**BRADEN 2nd GENERATION  
-1 MOTOR GROUPS**

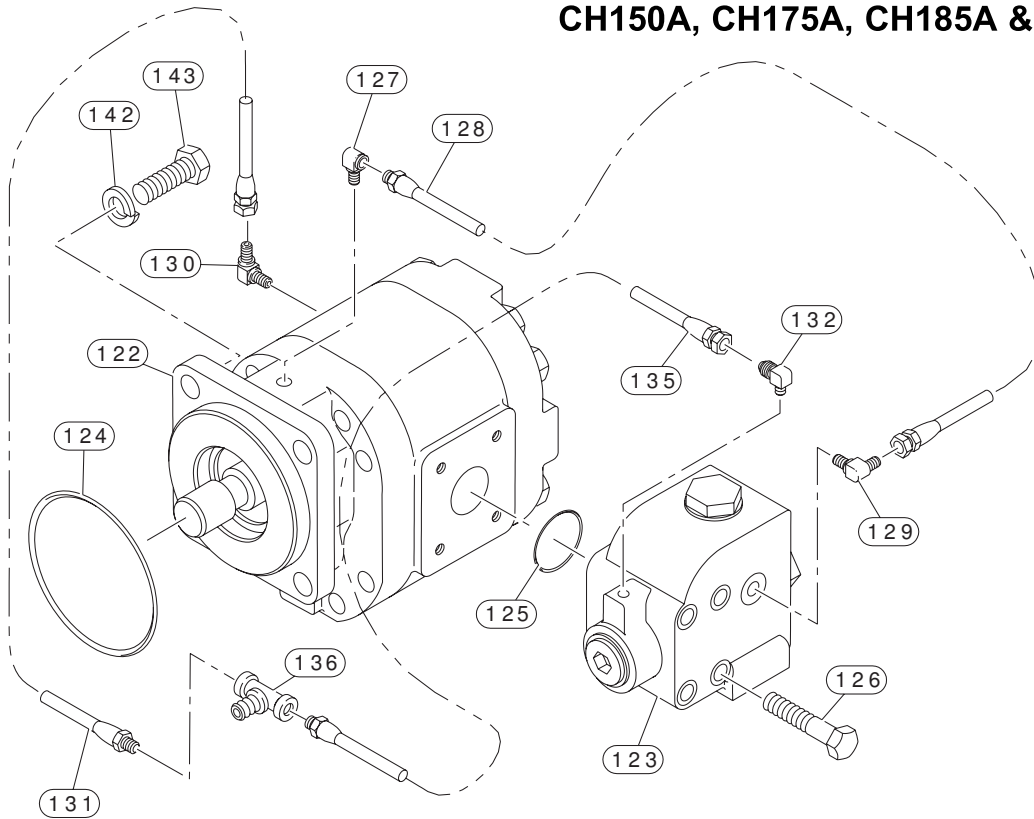
**TWO-SPEED MOTOR  
HYDRAULIC MOTOR SUBASSEMBLIES  
CH150A, CH175A, CH185A & CH230A**



ITEM	DESCRIPTION	PART NO.	QTY.
122	HYDRAULIC MOTOR - 2 SPEED	25337	1
123	BRAKE VALVE	81586	1
124	O-RING	10330	1
125	O-RING	21150	1
126	CAPSCREW (7/16 - 14 X 3 1/4 G5 SOCKET HD)	24012	4
127	ELBOW	24236	1
128	HOSE ASSEMBLY - 17 IN.	13707	1
129	TEE	29078	1
130	ELBOW FITTING	25302	1
131	HOSE ASSEMBLY - 17 IN.	13707	1
132	TEE	23769	1
133	NEEDLE VALVE	25258	1
133A	MALE CONNECTOR	21219	1
134	ADAPTER	24784	1
135	HOSE ASSEMBLY - 10 IN.	13711	1
136	TEE - MALE BRANCH	22934	1
137	PIPE PLUG	22374	1
140	WARNING TAG	25257	1
141	WARNING TAG	29080	1
142	LOCKWASHER (1/2)	11026	4
143	CAPSCREW (1/2 - 13 X 1 1/2 G8 Z)	104322	4

# BRADEN 2nd GENERATION STANDARD MOTOR GROUPS

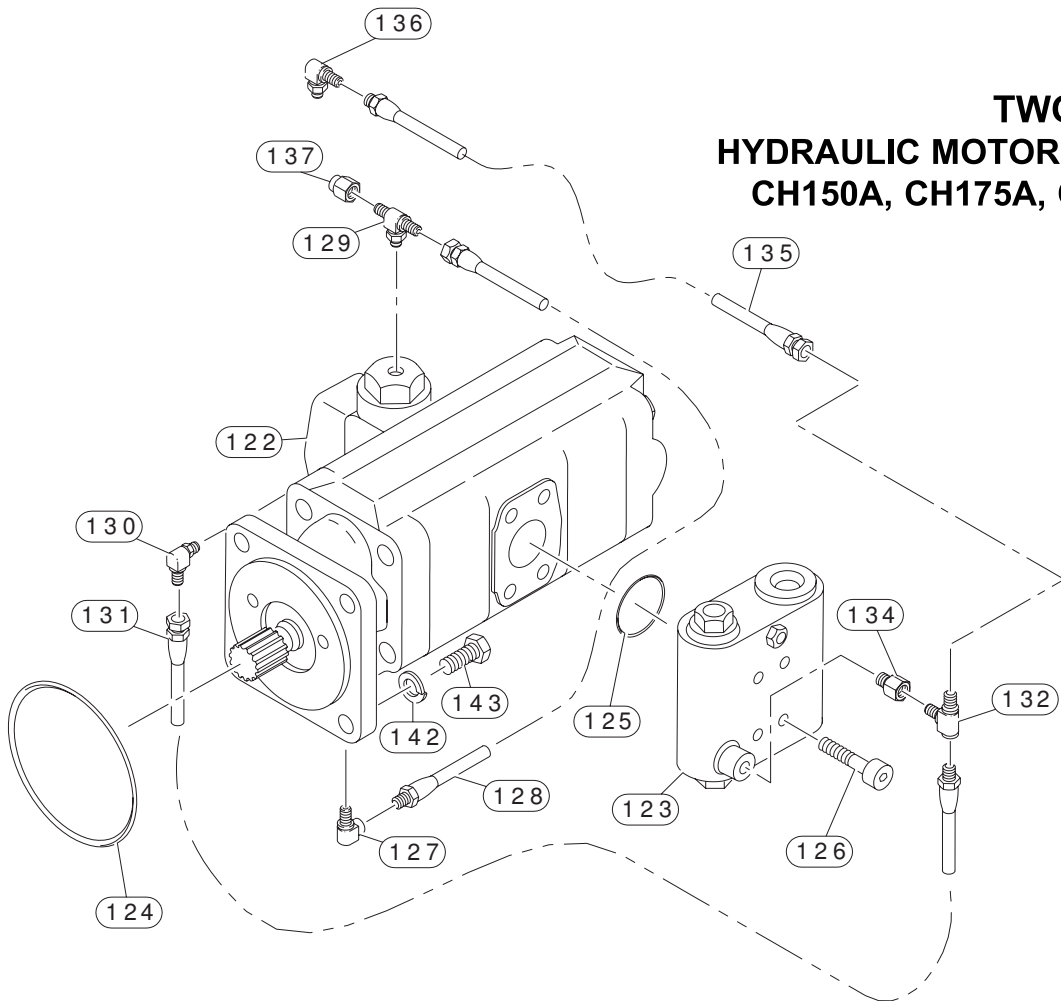
## SINGLE-SPEED MOTOR HYDRAULIC MOTOR SUBASSEMBLIES CH150A, CH175A, CH185A & CH230A



ITEM	DESCRIPTION	PART NO.	QTY.
122	11 CU. IN. HYDRAULIC MOTOR	25273	1
122	12 CU. IN. HYDRAULIC MOTOR	25274	1
122	9 CU. IN. HYDRAULIC MOTOR	25272	1
123	BRAKE VALVE	81609	1
124	O-RING	10330	1
125	O-RING	13542	1
126	CAPSCREW (1/2 - 13 X 4 1/2 )	23698	4
127	REDUCER-ELBOW	24236	1
128	HOSE ASSEMBLY - 16 IN.	13706	1
129	ELBOW	21163	1
130	ELBOW	25302	1
131	HOSE ASSEMBLY - 16 IN.	13706	1
132	ELBOW	21163	1
135	HOSE ASSEMBLY - 16 IN.	13706	1
136	TEE-MALE BRANCH	22934	1
142	LOCKWASHER (1/2)	11026	4
143	CAPSCREW (1/2 - 13 X 1 1/2 G8 Z)	104322	4

# BRADEN 2nd GENERATION

## TWO-SPEED MOTOR HYDRAULIC MOTOR SUBASSEMBLIES CH150A, CH175A, CH185A & CH230A



ITEM	DESCRIPTION	PART NO.	QTY.
122	HYDRAULIC MOTOR - 2 SPEED	25337	1
123	BRAKE VALVE	81586	1
124	O-RING	10330	1
125	O-RING	21150	1
126	CAPSCREW (7/16 - 14 X 3 1/4 G5)	24012	4
127	ELBOW	24236	1
128	HOSE ASSEMBLY - 17 IN.	13707	1
129	TEE FITTING	29078	1
130	ELBOW FITTING	25302	1
131	HOSE ASSEMBLY - 17 IN.	13707	1
132	TEE FITTING	22934	1
134	ADAPTER	24784	1
135	HOSE ASSEMBLY - 10 IN.	13711	1
136	ELBOW	25302	1
137	CAP	70182	1
142	LOCKWASHER (1/2)	11026	4
143	CAPSCREW (1/2 - 13 X 1 1/2 G8 Z)	104322	4

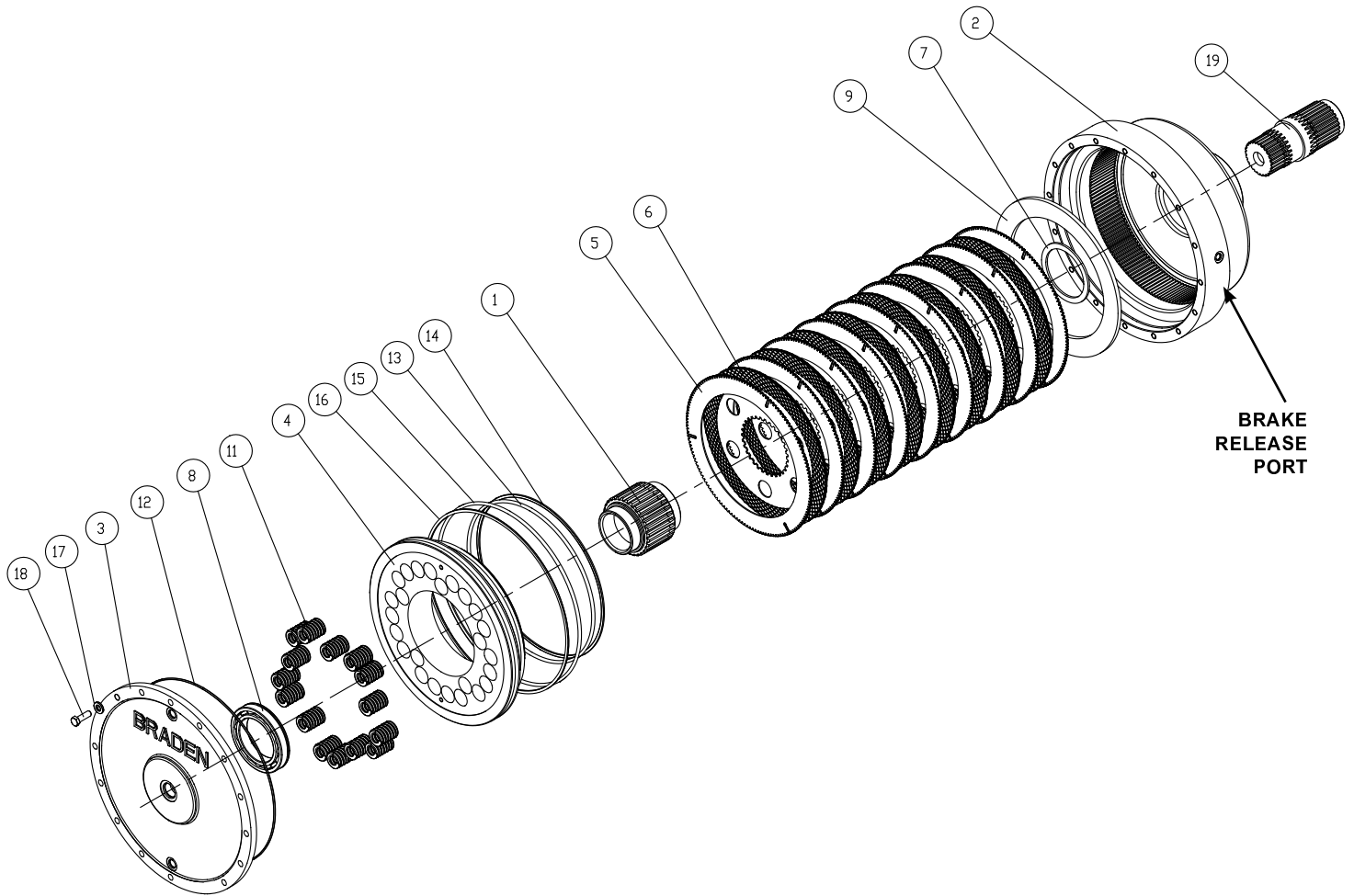
# KITS

## O-RING AND SEAL KITS

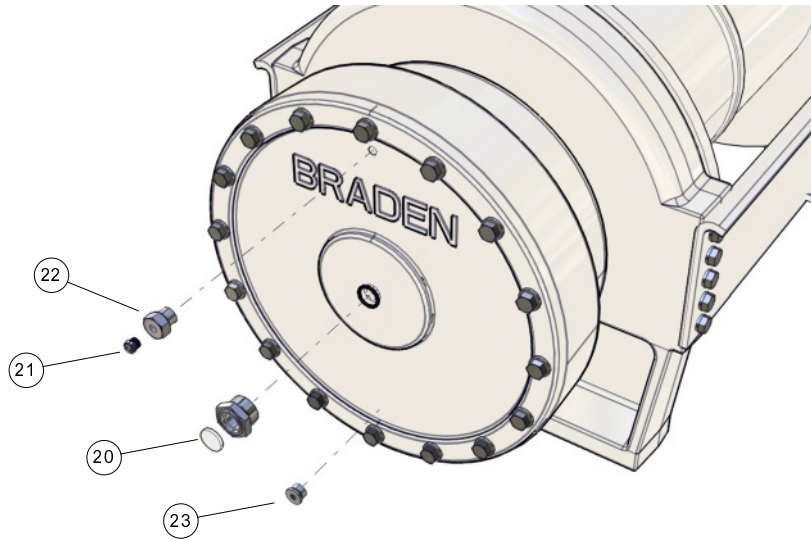
HOIST MODEL	KIT PART NO.
CH150, C2H150	61611
CH230, C2H230	61611
CH175, C2H175	61612
CH185, C2H185	61613

All kits contain item numbers  
11, 12, 13, 14, 50, 68, 69 & 70.

## AUXILIARY BRAKE COMPONENTS, CH175A-AB



## AUXILIARY BRAKE COMPONENTS

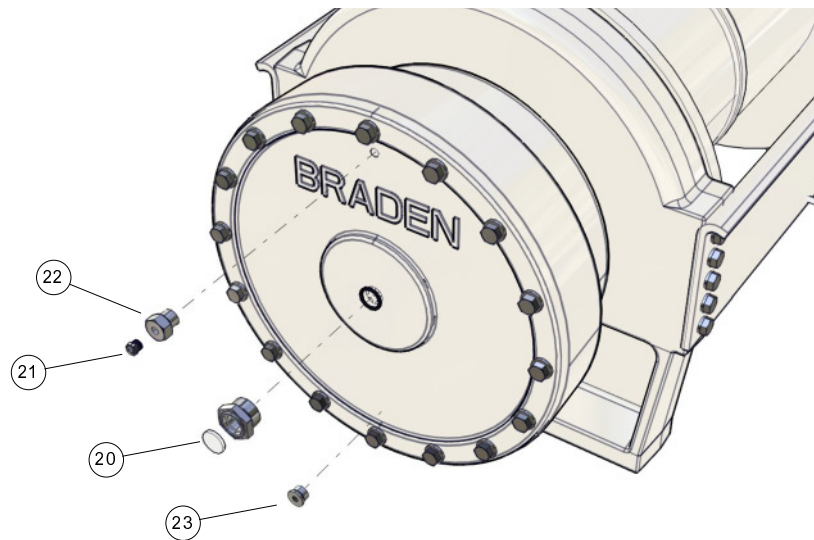
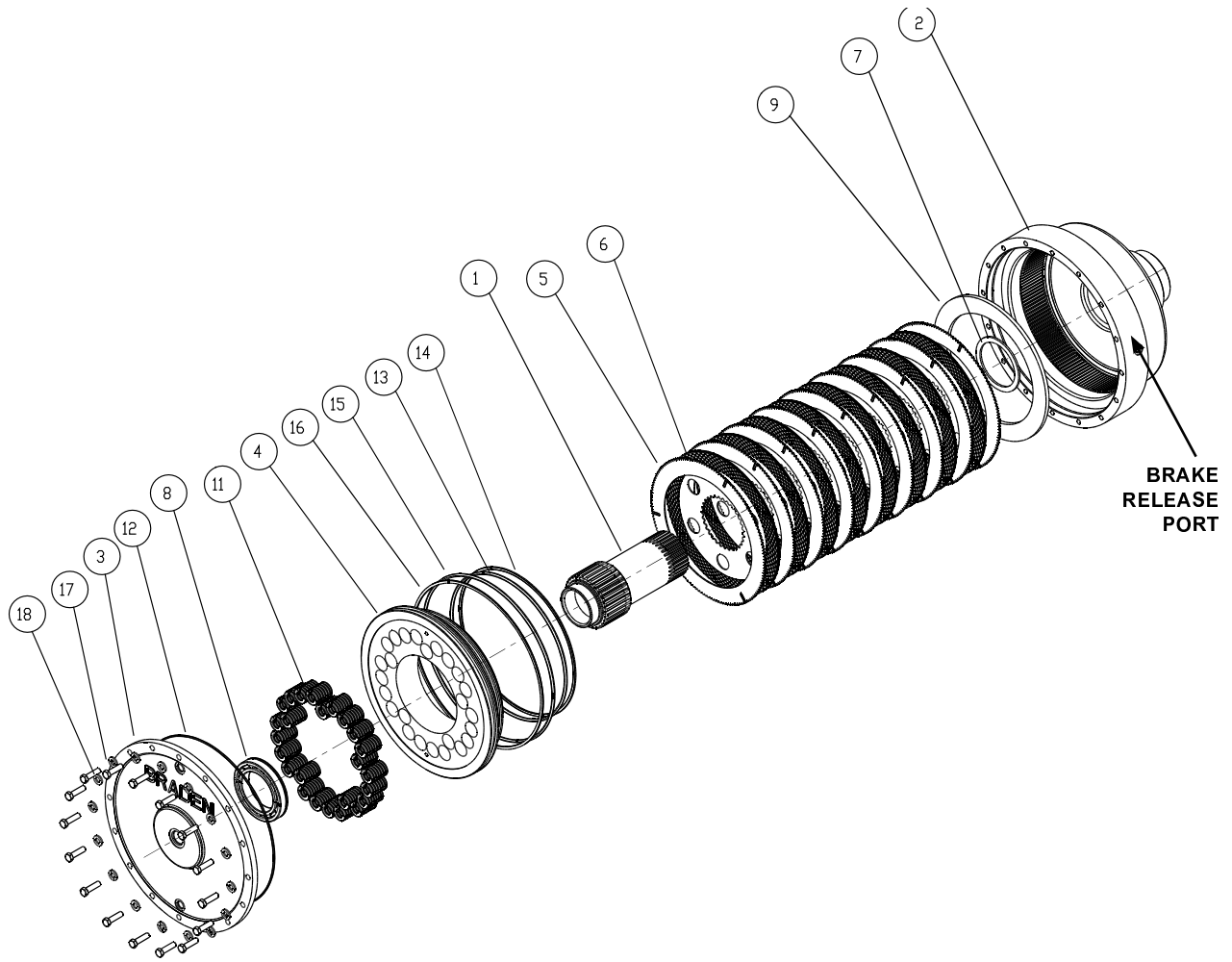


### AUXILIARY BRAKE ASSEMBLY, CH175A-AB

ITEM	DESCRIPTION	PART NO.	QTY.
1	BRAKE SHAFT	105166	1
2	BRAKE HOUSING	105185	1
3	COVER	104156	1
4	PISTON	104159	1
5	STEEL DIVIDER PLATE	72204	9
6	FRICTION BRAKE PLATE	73164	8
7	THRUST WASHER	28727	1
8	BEARING	70073	1
9	SPACER	29757	1
11	SPRING	104168	15
12	O-RING	72113	1
13	O-RING	26459	1
14	BACKUP RING	29857	1
15	O-RING	29856	1
16	BACKUP RING	29858	1
17	WASHER, HARDENED (1/2 Z)	100859	16
18	CAPSCREW (1/2 NC X 1-1/2 G8 Z)	104322	16
19	SUPPORT SHAFT	105204	1
20	SIGHT GLASS	25958	1
21	VENT RELIEF VALVE	18062	1
22	REDUCER BUSHING	26868	1
23	PLUG -8 ORB	32411	1

# AUXILIARY BRAKE COMPONENTS

## AUXILIARY BRAKE COMPONENTS, CH150A-CH230A



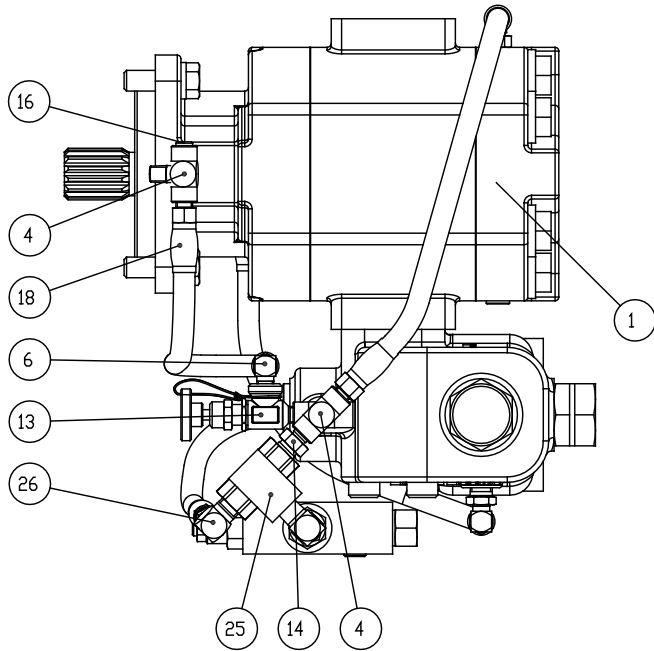


## AUXILIARY BRAKE COMPONENTS

### AUXILIARY BRAKE ASSEMBLY, CH150A-CH230A

ITEM	DESCRIPTION	PART NO.	QTY.
1	BRAKE SHAFT	104157	1
2	BRAKE HOUSING	104155	1
3	COVER	104156	1
4	PISTON	104159	1
5	STEEL DIVIDER PLATE	72204	9
6	BRAKE PLATE	73164	8
7	THRUST WASHER	28727	1
8	BEARING	70073	1
9	SPACER	29757	1
11	SPRING	104168	15
12	O-RING	72113	1
13	O-RING	26459	1
14	BACKUP RING	29857	1
15	O-RING	29856	1
16	BACKUP RING	29858	1
17	WASHER, HARDENED (1/2 Z)	100859	16
18	CAPSCREW (1/2 NC X 1-1/2 G8 Z)	104323	16
20	SIGHT GLASS	25958	1
21	VENT RELIEF VALVE	18062	1
22	REDUCER BUSHING	26868	1
23	PLUG -8 ORB	32411	1

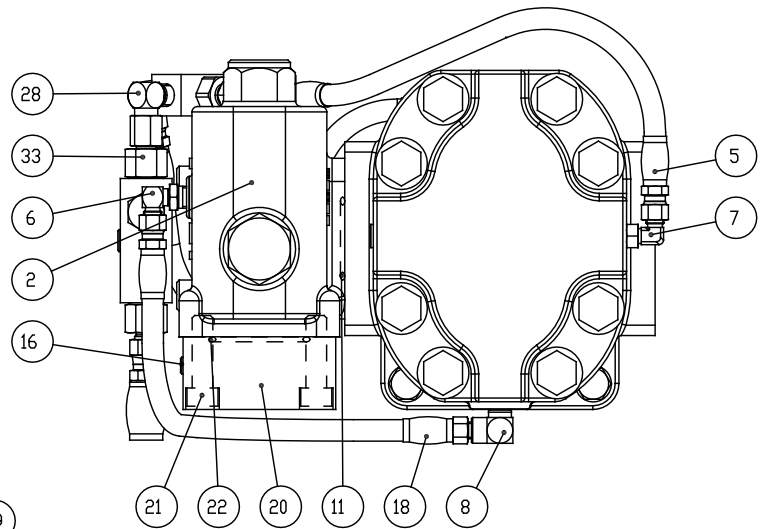
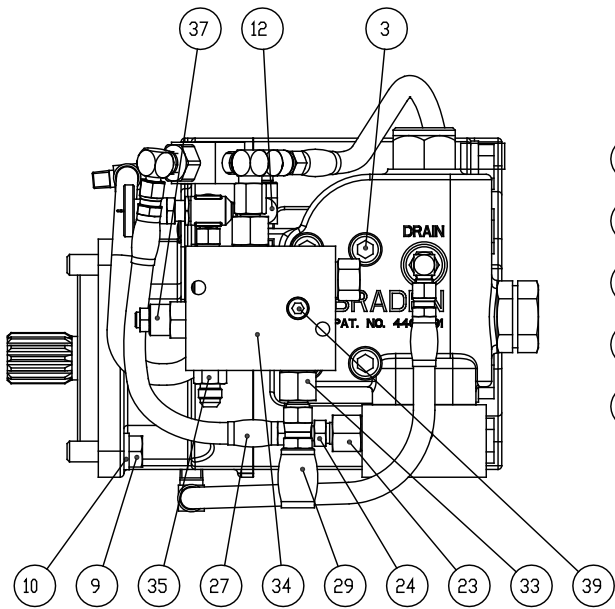
# MOTOR GROUP



**NOTES:**

Item 31 mounts in the brake release port on the Aux Brake Housing

Item 29 attaches to Item 31



## MOTOR GROUP

ITEM	DESCRIPTION	PART NO.	QTY.
1	9 CUBIC INCH HYDRAULIC MOTOR	25272	1
1	11 CUBIC INCH HYDRAULIC MOTOR	25273	1
1	12 CUBIC INCH HYDRAULIC MOTOR	25274	1
2	BRAKE VALVE	83133	1
3	CAPSCREW (1/2 NC X 4-1/2 G8 Z)	23690	4
4	TEE, MALE BRANCH	22934	2
5	HOSE ASSEMBLY	13706	1
6	ELBOW FITTING (JIC TO PIPE)	21163	2
7	ELBOW FITTING (JIC TO ORB)	25302	1
8	REDUCER ELBOW (PIPE -2 TO -4)	24236	1
9	CAPSCREW (1/2 NC X 1-1/2 G8 Z)	104322	4
10	LOCKWASHER (1/2)	11026	4
11	O-RING	13542	1
12	FEMALE PIPE TEE (-2, -2, -2)	23769	1
13	NEEDLE VALVE	25258	1
14	MALE PIPE REDUCER (1/4 TO 1/8)	29920	1
15	WARNING TAG (NOT SHOWN)	25257	1
16	PIPE PLUG (1/8)	22374	2
18	HOSE ASSEMBLY (14 IN.)	13705	2
20	MANIFOLD	28970	1
21	CAPSCREW (1/2 NC X 1-3/4 G8)	23044	4
22	O-RING	22574	1
23	REDUCER (ORB TO FEMALE PIPE)	40044	1
24	MALE CONNECTOR	70104	1
25	SHUTTLE VALVE	72331	1
26	ELBOW, 90 DEGREE (JIC TO PIPE)	31341	1
27	HOSE ASSEMBLY (10 IN.)	25936	1
28	ELBOW, 90 DEGREE (JIC TO PIPE)	40041	1
29	HOSE ASSEMBLY (45 INCH)	75885	1
30	HOSE CLAMP (NOT SHOWN)	30996	2
31	ELBOW, 90 DEGREE (JIC TO ORB)	31353	1
33	ADAPTER, STRAIGHT	26891	2
34	VALVE BODY	105346	1
35	CONNECTOR (JIC TO ORB)	75069	1
37	PRESSURE REDUCING CARTRIDGE	104216	1
39	PLUG (1/4)	70120	1

**BRADEN**  
**CARCO**  
**Gearmatic**

**PACCAR WINCH**  
800 East Dallas Street  
Broken Arrow, OK 74012  
[www.paccarwinch.com](http://www.paccarwinch.com)