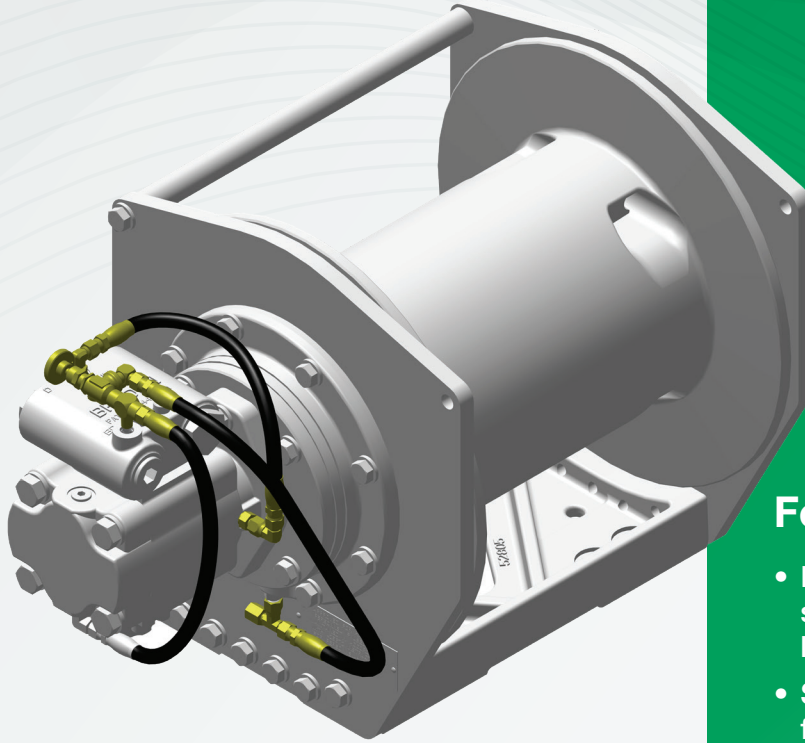


PD Series

PD7 | PD12 | PD15 | PD17 | PD21

BRADEN[®]

A PACCAR COMPANY



Features & Benefits

- Patented BRADEN brake valve enables smooth operation and precise load control
- Sealed, high-efficiency gear system for continuous duty performance and quiet operation
- Anti-friction bearings for long service life
- Overrunning clutch for fall-back prevention
- Dynamic and multi-disc static brake systems for smooth operation and fail-safe load handling
- Integrated gearing in the drum minimizes overall dimensions
- Multiple gear ratios and motor options for optimum performance
- API 2c compliant (optional)

PD Series planetary hoists deliver superior performance and unrivaled durability. The power drum design and patented BRADEN brake valve provide outstanding reliability and control. The simplified drum base allows for maximum installation versatility. With more than 200 standard configurations available, PD Series hoists can be used for a wide range of hoisting applications from mobile and offshore platform cranes to personnel handling systems and drill rigs.



Applications

- Utility
- Mobile Cranes
- Offshore Cranes
- Drilling

BRADEN
CARGO
Gearmatic

PACCAR WINCH

800 East Dallas | Broken Arrow, OK 74012
www.paccarwinch.com | 918.251.8511

LIT2908_09-2022 (PB) ©2022 PACCAR Inc

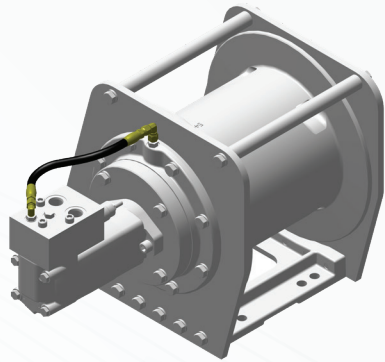


PD7C Planetary Hoist

7,000 lb (3,175 kg) Rated Line Pull

BRADEN®

A PACCAR COMPANY



Gear Ratio	6.75:1
Approx. Unit Weight	415 lb (188 kg)
Standard Motors	Multiple low-speed high-torque (LSHT) motor displacement options
Drum Size	01 — 9.63" (245 mm) B x 10" (254 mm) F x 14.25" (362 mm) BF 02 — 9.63" (245 mm) B x 15" (381 mm) F x 14.25" (362 mm) BF
Rope Diameters	3/8" (10 mm), 7/16" (11 mm), 1/2" (13 mm), 9/16" (14 mm)
API 2c Compliant	No

Specifications are representative of common configuration. Consult factory for additional options.

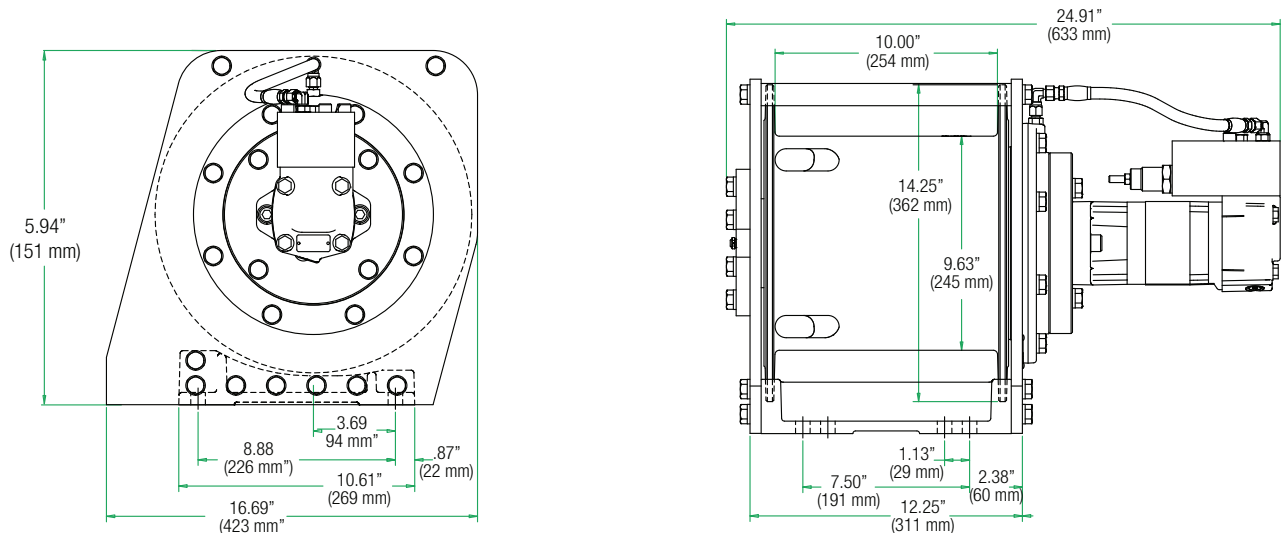
Performance (PD7C-07190-01)

	Layer 1	Layer 2	Layer 3	Layer 4
Line Pull*	7,000 lb (3,175 kg)	6,310 lb (2,862 kg)	5,740 lb (2,604 kg)	5,260 lb (2,386 kg)
Line Speed*	112 fpm (34.1 mpm)	124 fpm (37.8 mpm)	136 fpm (41.5 mpm)	149 fpm (45.4 mpm)
Drum Capacity**				
3/8" (10 mm)	69 ft (21 m)	144 ft (43.9 m)	225 ft (68.6 m)	310 ft (94.5 m)
7/16" (11 mm)	60 ft (18.3 m)	125 ft (38.1 m)	196 ft (59.7 m)	272 ft (82.9 m)
1/2" (13 mm)	53 ft (16.2 m)	111 ft (33.8 m)	174 ft (53 m)	243 ft (74.1 m)
9/16" (14 mm)	47 ft (14.3 m)	100 ft (30.5 m)	157 ft (47.9 m)	221 ft (67.4 m)

*Based on pressure of 2,700 psi (184 bar), 25 gpm (95 lpm), 9/16" (14 mm) rope and 18.7 CID (306 cc) motor. Actual performance will vary dependent on hydraulic system, motor, drum and cable sizes.

**Capacity per ANSI/ASME.

Dimensions (PD7C-07120-01 shown. Additional technical information available at www.paccarwinch.com.)

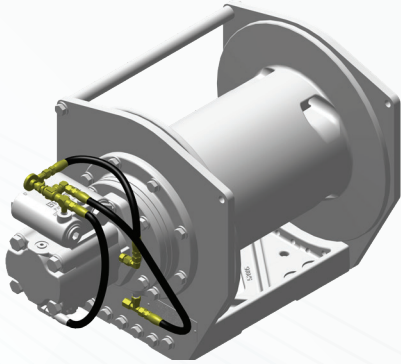


PD12C Planetary Hoist

12,000 lb (5,443 kg) Rated Line Pull

BRADEN[®]

A PACCAR COMPANY



Gear Ratios	59:1, 41:1, 29:1, 21:1
Approx. Unit Weight	375 to 1,030 lb (170 to 467 kg)
Standard Motors	080 (8.0 CID), 064 (6.38 CID), 051 (5.1 CID), 039 (3.92 CID), 034 (3.43 CID), 029 (2.94 CID), 049,024 (2-Speed)
Drum Sizes	01 — 9.75" (248 mm) B x 14" (356 mm) F x 13.75" (349 mm) BF 02/02G — 9.75" (248 mm) B x 16.38" (416 mm) F x 13.75" (349 mm) BF 04 — 10.63" (270 mm) B x 20" (508 mm) F x 13.5" (343 mm) BF 05 — 10.63" (270 mm) B x 16.5" (419 mm) F x 13.5" (343 mm) BF
Rope Diameters	3/8" (10 mm), 7/16" (11 mm), 1/2" (13 mm), 9/16" (14 mm)
Freefall Options	Freefall (FF), Controlled Freefall (CF)
Cable Management Options	Grooved Drum, Tension Roller
API 2c Compliant	Yes (optional)

Specifications are representative of common configuration. Consult factory for additional options.

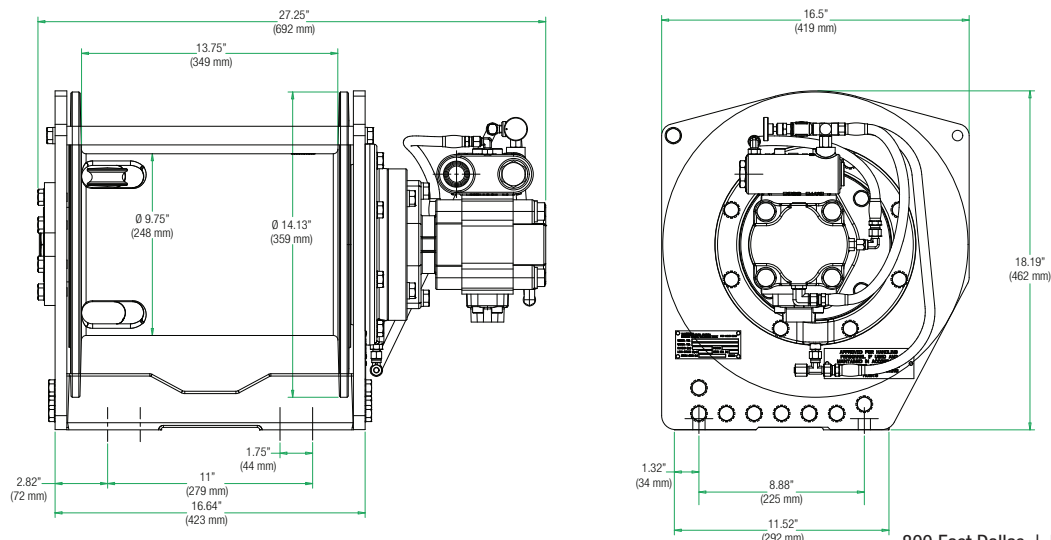
Performance (PD12C-59039-01-1)

	Layer 1	Layer 2	Layer 3	Layer 4
Line Pull*	12,000 lb (5,443 kg)	10,930 lb (4,958 kg)	10,040 lb (4,554 kg)	9,280 lb (4,209 kg)
Line Speed*	160 fpm (48.8 mpm)	176 fpm (53.6 mpm)	190 fpm (57.9 mpm)	207 fpm (63.1 mpm)
Drum Capacity**				
3/8" (10 mm)	97 ft (29.6 m)	201 ft (61.3 m)	313 ft (95.4 m)	431 ft (131.4 m)
7/16" (11 mm)	83 ft (25.3 m)	174 ft (53 m)	273 ft (83.2 m)	378 ft (115.2 m)
1/2" (13 mm)	73 ft (22.3 m)	154 ft (46.9 m)	242 ft (73.8 m)	338 ft (103 m)
9/16" (14 mm)	65 ft (19.8 m)	139 ft (42.4 m)	219 ft (66.8 m)	307 ft (93.6 m)

*Based on pressure of 2,400 psi (166 bar), 65 gpm (246 lpm), 1/2" (13 mm) rope and 3.92 CID (64 cc) motor. Actual performance will vary dependent on hydraulic system, motor, drum and cable sizes.

**Capacity per ANSI/ASME.

Dimensions (PD12C-SPL-59039-02-1 shown. Additional technical information available at www.paccarwinch.com.)



BRADEN
CARGO
Gearmatic

PACCAR WINCH

800 East Dallas | Broken Arrow, OK 74012

www.paccarwinch.com | 918.251.8511

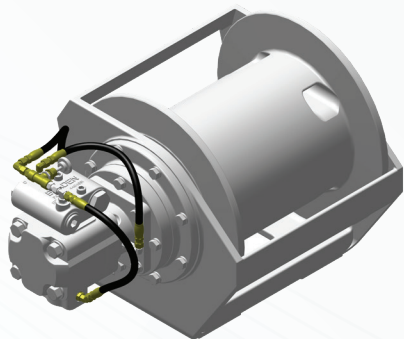
LIT2908_09-2022 (PB) ©2022 PACCAR Inc



PD15B Planetary Hoist

15,000 lb (6,804 kg) Rated Line Pull

BRADEN[®]
A PACCAR COMPANY



Gear Ratios	41:1, 34:1
Approx. Unit Weight	270 lb (122 kg) Short / 300 lb (136 kg) Long
Standard Motors	080 (8.0 CID), 064 (6.38 CID), 051 (5.1 CID), 032 (3.18 CID)
Drum Sizes	04 — 10.63" (270 mm) B x 20" (508 mm) F x 13.5" (343 mm) BF 05 — 10.63" (270 mm) B x 16.5" (419 mm) F x 13.5" (343 mm) BF 06 — 10.5" (267 mm) B x 20" (508 mm) F x 22.42" (569 mm) BF 23 — 10.63" (270 mm) B x 18" (457 mm) F x 13.5" (343 mm) BF
Rope Diameters	1/2" (13 mm), 9/16" (14 mm), 5/8" (16 mm)
Freefall Options	Freefall (FF), Controlled Freefall (CF)
Cable Management Options	Grooved Drum, Tension Roller
API 2c Compliant	Yes (optional)

Specifications are representative of common configuration. Consult factory for additional options.

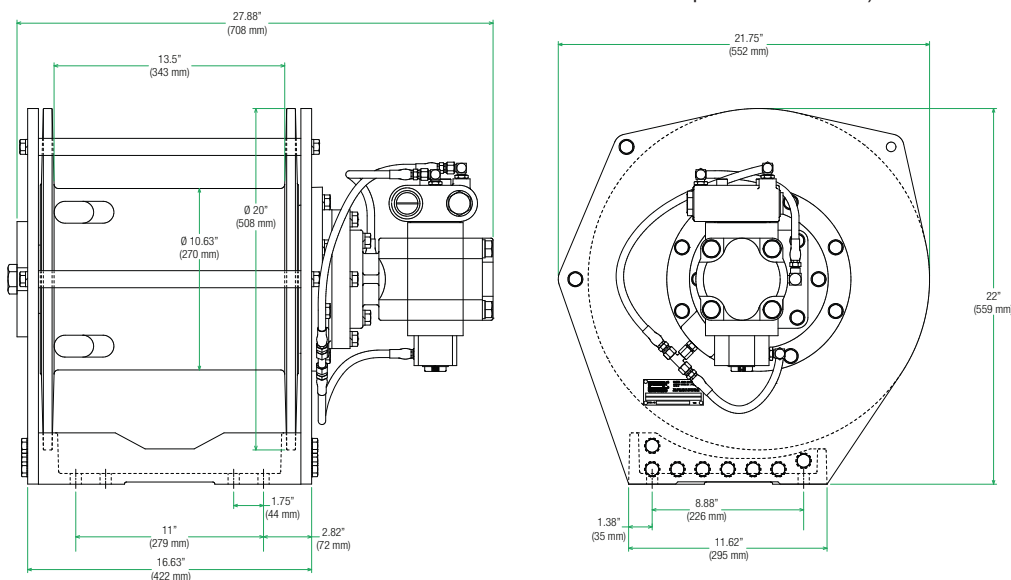
Performance (PD15B-41064-04)

	Layer 1	Layer 2	Layer 3	Layer 4	Layer 5
Line Pull*	15,000 lb (6,804 kg)	13,500 lb (6,123 kg)	12,270 lb (5,566 kg)	11,250 lb (5,103 kg)	10,380 lb (4,708 kg)
Line Speed*	193 fpm (58.8 mpm)	215 fpm (65.5 mpm)	236 fpm (71.9 mpm)	258 fpm (78.6 mpm)	279 fpm (85 mpm)
Drum Capacity**					
1/2" (13 mm)	79 ft (24.1 m)	165 ft (50.3 m)	258 ft (78.6 m)	358 ft (109.1 m)	465 ft (141.7 m)
9/16" (14 mm)	70 ft (21.3 m)	147 ft (44.8 m)	231 ft (70.4 m)	322 ft (98.1 m)	421 ft (128.3 m)
5/8" (16 mm)	64 ft (19.5 m)	135 ft (41.1 m)	213 ft (64.9 m)	298 ft (90.8 m)	390 ft (118.9 m)

*Based on pressure of 2,605 psi (179.6 bar), 80 gpm (303 lpm), 5/8" (16 mm) rope and 6.38 CID motor.
Actual performance will vary dependent on hydraulic system, motor, drum and cable sizes.

**Capacity per ANSI/ASME.

Dimensions (PD15B-41064-04 shown. Additional technical information available at www.paccarwinch.com.)



BRADEN
CARCO
Gearmatic

PACCAR WINCH

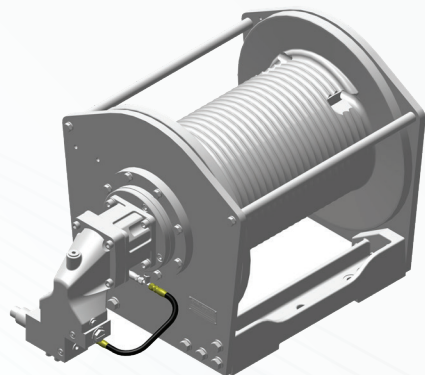
800 East Dallas | Broken Arrow, OK 74012
www.paccarwinch.com | 918.251.8511

LIT2908_09-2022 (PB) ©2022 PACCAR Inc



PD17A Planetary Hoist

17,500 lb (7,938 kg) Rated Line Pull



Gear Ratios	47:1
Approx. Unit Weight	970 to 1,290 lb (440 to 585 kg)
Standard Motors	P049 (4.9 CID), V065/042 and V049/027 (Variable Displacement Piston)
Drum Size	13" (330 mm) Barrel x 21.5" (546 mm) Flange x 19.7" (500 mm) Between Flanges
Rope Diameters	3/4" (19 mm)
Freefall Options	Controlled Freefall (CF)
Cable Management Options	Grooved Drum (standard), Tension Roller
API 2c Compliant	Yes (optional)

Specifications are representative of common configuration. Consult factory for additional options.

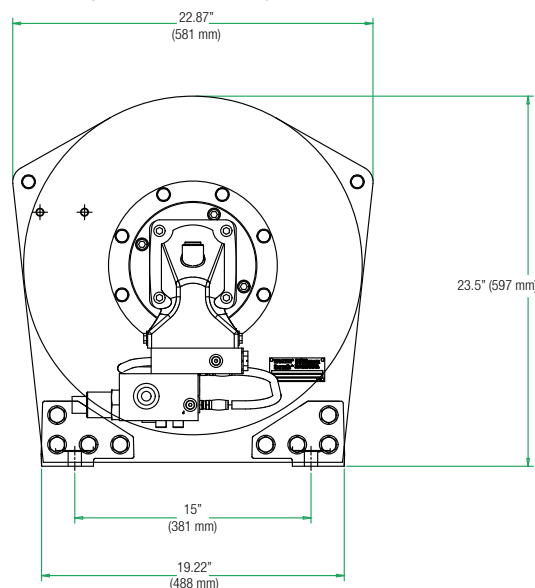
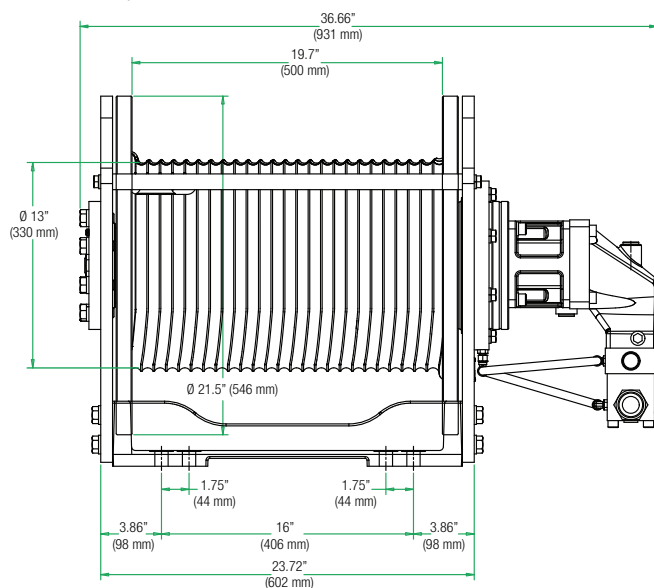
Performance (PD17A-47V065/042-27G)

	Layer 1	Layer 2	Layer 3	Layer 4	Layer 5
Line Pull*					
LOW	17,500 lb (7,938 kg)	15,780 lb (7,158 kg)	14,360 lb (6,514 kg)	13,180 lb (5,978 kg)	12,180 lb (5,525 kg)
HIGH	11,490 lb (5,212 kg)	10,320 lb (4,681 kg)	9,390 lb (4,259 kg)	8,620 lb (3,910 kg)	7,970 lb (3,615 kg)
Line Speed*					
LOW	127 fpm (38.7 mpm)	141 fpm (43 mpm)	155 fpm (47.2 mpm)	169 fpm (51.5 mpm)	180 fpm (54.8 mpm)
HIGH	269 fpm (82 mpm)	298 fpm (90.8 mpm)	328 fpm (100 mpm)	357 fpm (108.8 mpm)	386 fpm (117.7 mpm)
Drum Capacity**					
3/4" (19 mm)	101 ft (30.8 m)	212 ft (64.6 m)	332 ft (101.2 m)	462 ft (140.8 m)	602 ft (183.5 m)

*Based on pressure of 3,210 psi (221 bar), 68 gpm (257.4 lpm), 3/4" in (19 mm) rope and V065/042 2-speed piston motor. Actual performance will vary dependent on hydraulic system, motor, drum and cable sizes.

**Capacity per ANSI/ASME.

Dimensions (PD17A-47P049-27G shown. Additional technical information available at www.paccarwinch.com.)

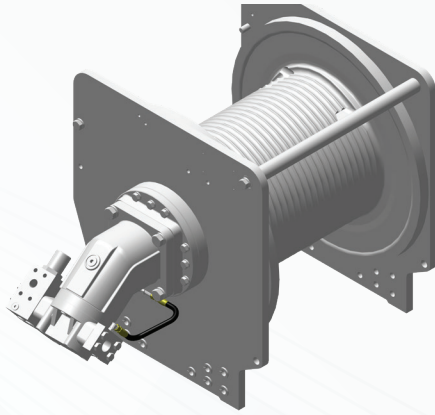


PD21A Planetary Hoist

21,000 lb (9,525 kg) Rated Line Pull

BRADEN[®]

A PACCAR COMPANY



Gear Ratios	50:1
Approx. Unit Weight	965 to 1,530 lb (438 to 694 kg)
Standard Motors	P065 (9.5 CID Piston), V065/032 (Variable Displacement Piston)
Drum Size	15" (381 mm) Barrel x 25.5" (648 mm) Flange x 18.89" (480 mm) Between Flanges
Rope Diameters	3/4" (19 mm)
Cable Management Options	Grooved Drum, Tension Roller
API 2c Compliant	No

Specifications are representative of common configuration. Consult factory for additional options.

Performance (PD21A-50V065/032-08G)

	Layer 1	Layer 2	Layer 3	Layer 4	Layer 5
Line Pull*					
LOW	20,250 lb (9,205 kg)	18,490 lb (8,405 kg)	17,101 lb (7,732 kg)	15,750 lb (7,159 kg)	
HIGH	8,420 lb (3,827 kg)	7,690 lb (3,495 kg)	7,070 lb (3,214 kg)	6,550 lb (2,977 kg)	
Line Speed*					
LOW	138 fpm (42 mpm)	151 fpm (46 mpm)	164 fpm (50 mpm)	178 fpm (54 mpm)	
HIGH	282 fpm (86 mpm)	309 fpm (94 mpm)	336 fpm (102 mpm)	363 fpm (111 mpm)	
Drum Capacity**					
3/4" (19 mm)	101 ft (30.8 m)	212 ft (64.6 m)	332 ft (101.2 m)	462 ft (140.8 m)	602 ft (183.5 m)

*Based on pressure of 4,000 psi (276 bar), 50 gpm (189.3 lpm), 3/4" (19 mm) rope and V065/032 2-speed piston motor.
Actual performance will vary dependent on hydraulic system, motor, drum and cable sizes.

**Capacity per ASME B30.5.

Dimensions (PD21A-50V065/032-08G shown. Additional technical information available at www.paccarwinch.com.)

