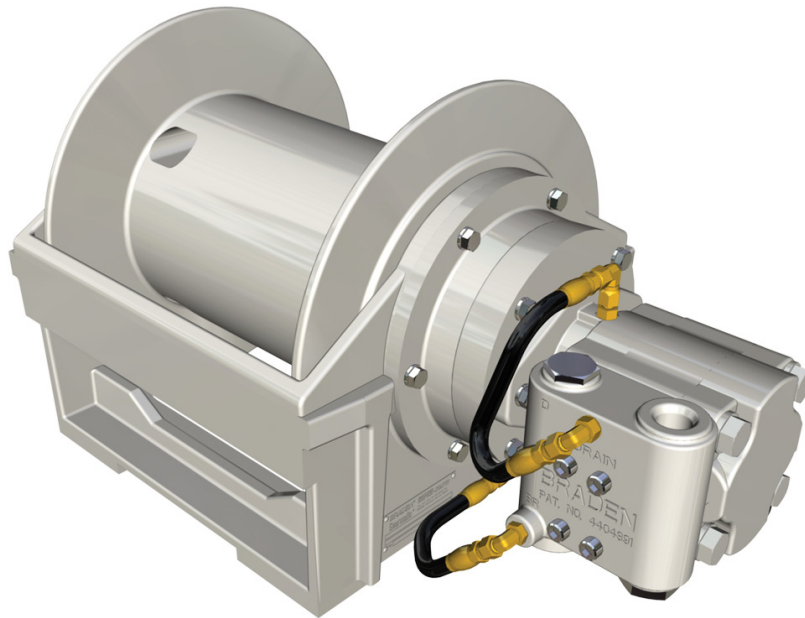


PARTS LIST



WRITE HOIST SERIAL NUMBER BELOW

| | | | | | | | | | |
|--|--|--|--|--|--|--|--|--|--|
| | | | | | | | | | |
|--|--|--|--|--|--|--|--|--|--|

First 2 numbers indicate
year manufactured

For serial number location see page 3

TABLE OF CONTENTS

| | |
|---------------------------------------|-------|
| LUBRICATION..... | 4 |
| SERVICE KITS..... | 5 |
| BG8B COMMON PARTS | 6-7 |
| PRIMARY PLANET CARRIER ASSEMBLY | 8 |
| OUTPUT PLANET CARRIER ASSEMBLY..... | 9 |
| BRAKE CYLINDER ASSEMBLY | 10 |
| OVERRUNING CLUTCH ASSEMBLY..... | 11 |
| MOTOR GROUPS..... | 12-17 |
| BRAKE VALVE ASSEMBLY | 18 |
| METRIC CONVERSION CHART | 19 |

FOREWORD

Read this entire publication and retain it for future reference.

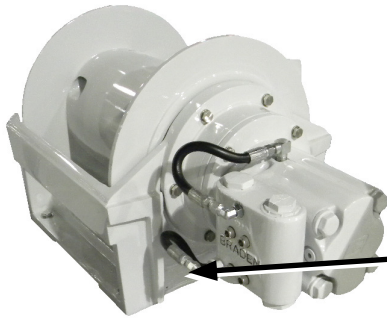
If you have any questions regarding your BRADEN BG8B Hoist or this publication, call the BRADEN Service Department at 1-918-251-8511, 08:00-16:30 hours Central Time Zone, Monday through Friday.

Some illustrations in this manual may show details or attachments that are different from your hoist. Also, some components have been removed for illustrative purposes. Illustrations and pictures in this manual are of a “typical” unit sold through our distribution channels. Some hoists, particularly those sold to original equipment manufacturers, may differ slightly in appearance.

Whenever a question arises regarding your BRADEN Hoist, please contact the BRADEN Service Department for the latest available information.

PACCAR WINCH
Service Department
P.O. Box 547
Broken Arrow, Oklahoma 74013-0547 United States of America
www.paccarwinch.com

EXPLANATION OF MODEL NUMBER



The hoist model number and serial number are stamped onto the data plate of the motor side end plate. Both of these numbers are extremely important in the shipment of the proper replacement parts, and your order should always reference them.

HOIST SERIAL NUMBER

HOIST MODEL NUMBER

| | | | | | | |
|---------------------|---------------|-----------------|---------------|---------------|-----------|-----------------------|
| <u>BG</u> | <u>8</u> | <u>B</u> | <u>34</u> | <u>039</u> | <u>01</u> | <u>1</u> |
| BRADEN GEARMATIC | MAX RATING | DESIGN MODEL | GEAR RATIO | MOTOR SIZE | DRUM SIZE | PERSONNEL HANDLING |

- BG** DESIGNATES BRADEN GEARMATIC
- 8** DESIGNATE 8,000 LB FIRST LAYER LINE PULL
- B** DESIGNATES THE MODEL SERIES RELATING TO DESIGN CHANGES
- 34** DESIGNATES TOTAL GEAR REDUCTION
(23 = 23.06:1; 34 = 34.2:1; 59 = 59.06:1; 69/23 [69.19:1 Hoist
23.06:1 Lower])
- 039** DESIGNATES HYDRAULIC MOTOR DISPLACEMENT IN CU IN/REV
(DECIMAL POINT ELIMINATED - EXAMPLE 039 – 3.9 CU IN/REV)
- 01** DESIGNATES THE DRUM OPTION
- 1** MEETS API 2C RECOMMENDATION

TO ORDER PARTS -

- (1) List model and serial numbers of the hoist
- (2) Refer to exploded view and select the component(s) needed and note item number
- (3) Find item number on material list, show PART NO., description and quantity required on your order
- (4) Refer to Parts Price list and show price for each component or assembly

FOR BEST RESULTS, ALWAYS USE GENUINE BRADEN REPLACEMENT PARTS

LUBRICATION

RECOMMENDED PLANETARY GEAR OIL

Field experience, supported by engineering endurance tests, indicates the use of the proper gear oil and a program of regular preventive maintenance will help provide extended gear train life and reliable hoist brake performance. For this reason, BRADEN has published the following specifications to assist in determining which lubricant is best suited to your application.

For simplicity, BRADEN has listed available products in each temperature range that have been tested and found to meet our specifications. This is not to say that other lubricant brands would not perform equally as well.

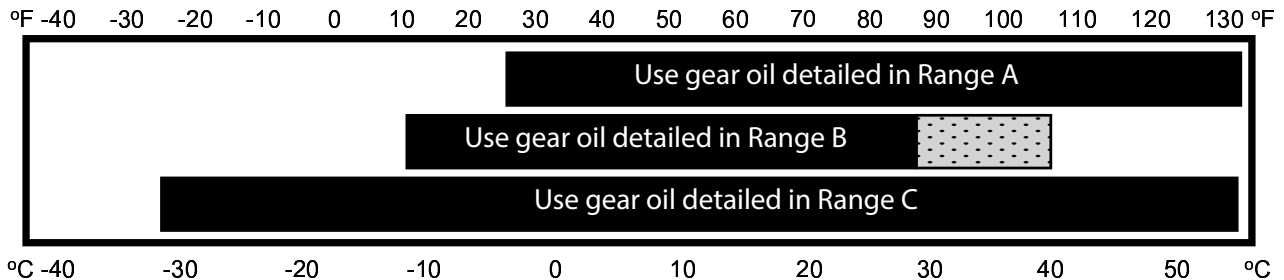
If the following lubricant brands are not available in your area, make certain your lubricant vendor supplies you with oil equivalent to those products listed below.

⚠ WARNING ⚠

Failure to use the proper type and viscosity of planetary gear oil may contribute to intermittent brake clutch slippage, which could result in property damage, severe personal injury, or death. Some gear lubricants contain large amounts of EP (Extreme Pressure) and anti-friction additives, which may contribute to brake clutch slippage or damage to brake friction discs or seals. **NOTE: DO NOT use oil that is labeled as meeting "API Service GL-5."** Oil viscosity, affected by ambient temperature, is also critical to reliable brake clutch operation. Our tests indicate excessively heavy or thick gear oil may contribute to intermittent brake clutch slippage. Make certain the gear oil viscosity used in your hoist is correct for your prevailing ambient temperature.

RECOMMENDED GEAR OIL

PREVAILING AMBIENT TEMPERATURE



SHADED TEMPERATURE RANGE IN THE CHART ABOVE NOT RECOMMENDED FOR SEVERE APPLICATIONS SUCH AS SUSTAINED FAST DUTY CYCLES OR FREQUENT WINCHING.

Winches are factory filled with Mobilgear 600 XP 150 or equivalent. Consult your oil supplier for other equivalent oils if required.

| | Mobil | Shell | Chevron | Texaco |
|---------|----------------------|-----------------|-----------------------|------------|
| Range A | Mobilgear 600 XP 220 | Omala S2 G 220 | Gear Compounds EP 220 | Meropa 220 |
| Range B | Mobilgear 600 XP 150 | Omala S2 G 150 | Gear Compounds EP 150 | Meropa 150 |
| Range C | Mobilgear SHC 150 | Omala S4 GX 150 | | |

⚠ WARNING ⚠

Failure to properly warm up the winch, particularly under low ambient temperature conditions, may result in temporary brake slippage due to high back pressures attempting to release the brake, which could result in property damage, severe personal injury or death.

If you have any questions regarding this bulletin or your BRADEN planetary winch, please contact the BRADEN Product Support Department at 1-918-251-8511, Monday through Friday from 08:00 to 16:30 hours CST, or by fax at 1-918-259-1575.

SERVICE KITS

SEAL KIT - EQUAL-SPEED HOIST

| PART NO. | DESCRIPTION |
|----------|--|
| 63674 | BG8B - EQUAL SPEED HOISTS INCLUDES ITEMS 2, 8, 9, 29, 43, 67, 80 |

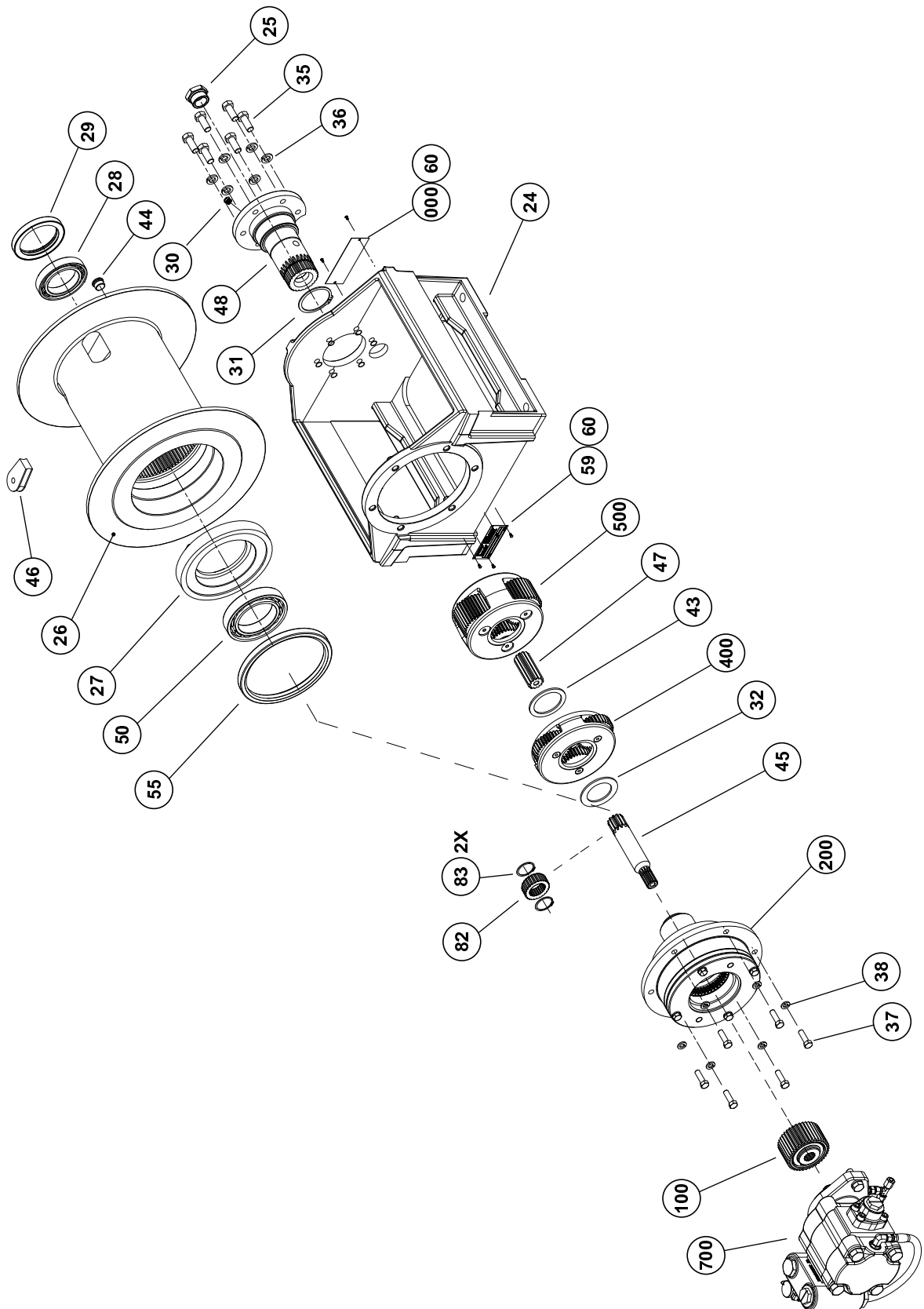
64572 BEARING KIT - EQUAL-SPEED HOIST

| PART NO. | DESCRIPTION | QTY. |
|----------|-----------------------------|------|
| 25299 | BALL BEARING | 1 |
| 72385 | BEARING | 1 |
| 25300 | THRUST RING | 1 |
| 76142 | THRUST RING | 1 |
| 24914 | THRUST WASHER | 6 |
| 25333 | ROLLER BEARING | 3 |
| 12026 | ROLLPIN | 3 |
| 25332 | PRIMARY PLANET GEAR SHAFT | 3 |
| 25361 | BEARING RACE | 6 |
| 24175 | ROLLER BEARING | 6 |
| 24890 | BEARING SPACER | 3 |
| 21049 | ROLLPIN | 3 |
| 25666 | SECONDARY PLANET GEAR SHAFT | 3 |

64571 BRAKE SERVICE KIT - EQUAL-SPEED HOIST

| PART NO. | DESCRIPTION | QTY. |
|----------|---------------|------|
| 100027 | BRAKE DISC | 6 |
| 21036 | FRICTION DISC | 5 |
| 25723 | SPRING | 12 |

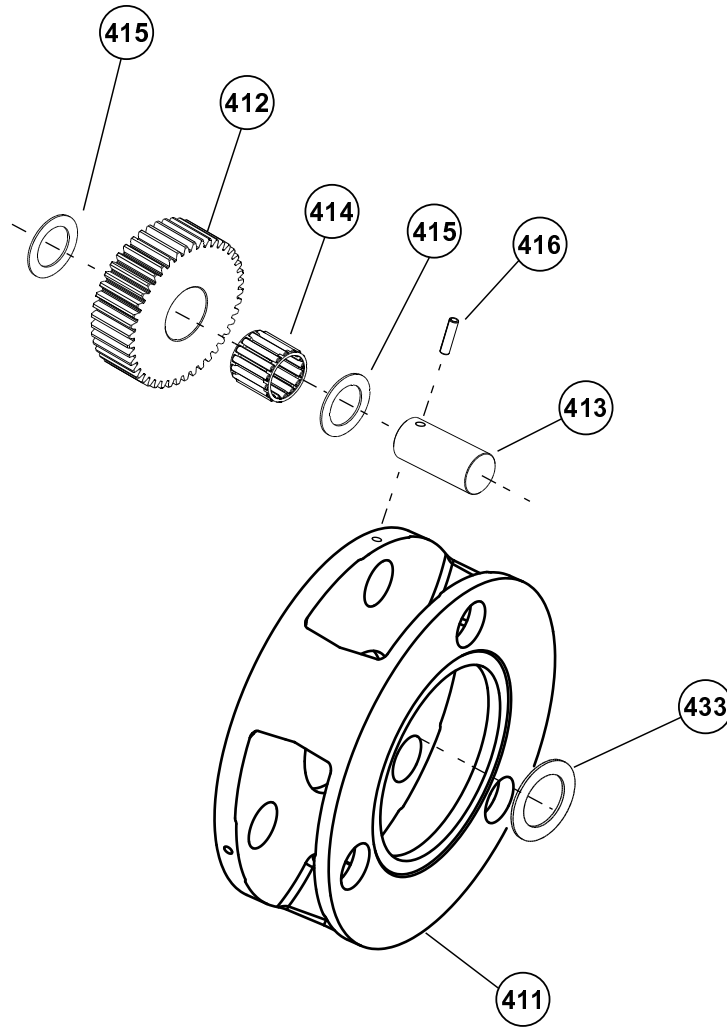
BG8B COMMON PARTS



BG8B COMMON PARTS

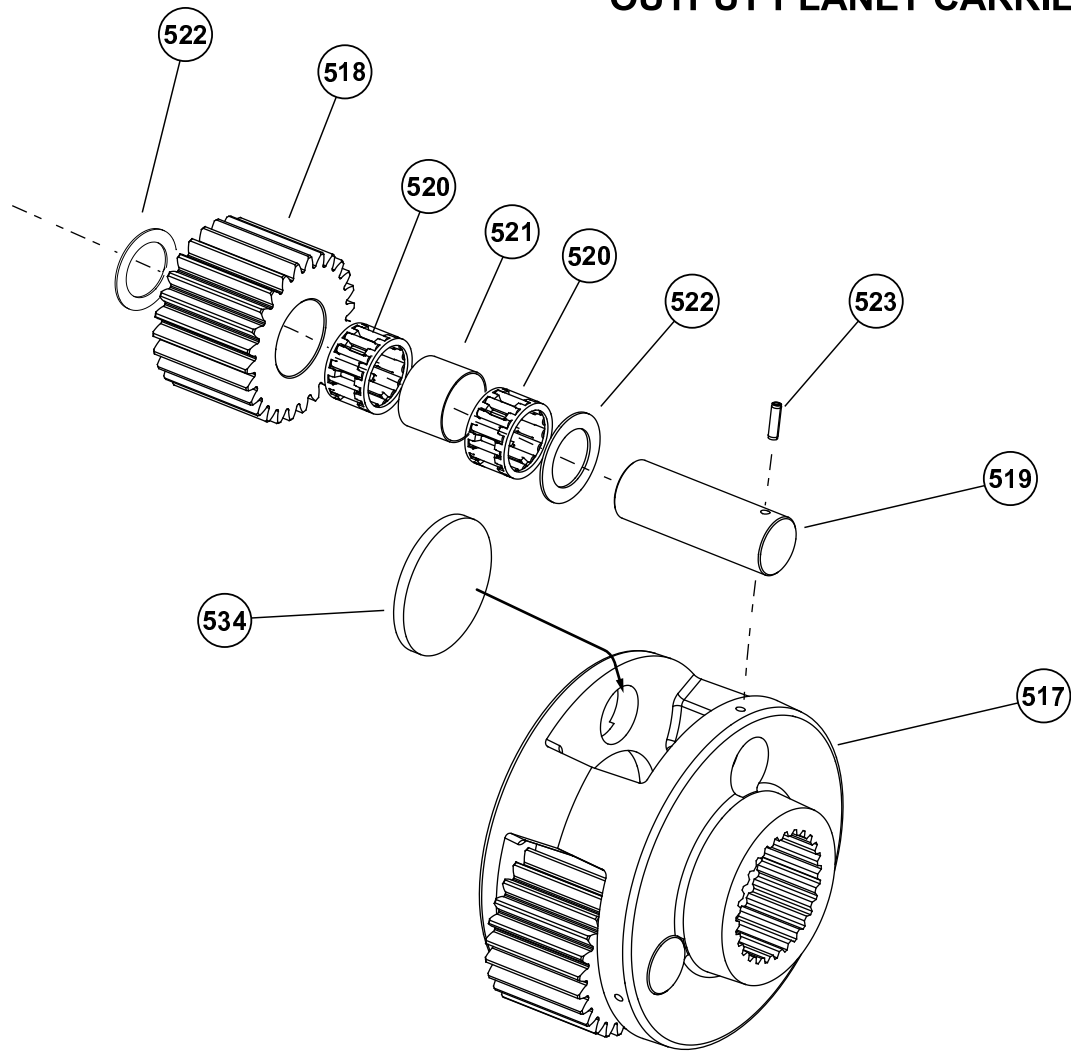
| ITEM | DESCRIPTION | PART NO. | QTY. |
|---|---|----------|------|
| 24 | BASE | 25977 | 1 |
| 25 | OIL LEVEL PLUG | 24420 | 1 |
| 25 | OIL LEVEL SIGHT GAUGE | 25958 | 1 |
| 26 | CABLE DRUM | 103312 | 1 |
| 27 | CABLE DRUM CLOSURE | 103313 | 1 |
| 28 | BALL BEARING | 25299 | 1 |
| 29 | SEAL, LIP | 28844 | 1 |
| 30 | RELIEF VALVE 7.5-15 PSI | 18062 | 1 |
| 31 | SNAP RING | 25528 | 1 |
| 32 | THRUST RING | 25300 | 1 |
| 35 | CAPSCREW 1/2-13 X 1-1/4 GD8-Z HX HD | 104174 | 6 |
| 36 | LOCKWASHER 1/2 Z | 11026 | 8 |
| 37 | CAPSCREW 3/8-16 X 1-1/4 GD8 Z HX HD | 104132 | 6 |
| 38 | LOCKWASHER 3/8 Z | 27152 | 6 |
| 43 | THRUST RING | 76142 | 1 |
| 44 | PLUG, O-RING FLUSH | 32411 | 1 |
| 45 | SUN GEAR - PRIMARY (34:1 RATIO MODELS) | 25511 | 1 |
| 45 | SUN GEAR - PRIMARY (23:1 AND 59:1 RATIO MODELS) | 102928 | 1 |
| 46 | CABLE WEDGE 3/8-9/16 (10-14 MM) | 74780 | 1 |
| 47 | SUN GEAR - OUTPUT (23:1 AND 34:1 RATIO MODELS) | 25509 | 1 |
| 47 | SUN GEAR - OUTPUT (59:1 RATIO MODELS) | 24891 | 1 |
| 48 | BEARING SUPPORT - STANDARD | 28843 | 1 |
| 48 | BEARING SUPPORT - HEAVY DUTY ("H") MODELS | 29685 | 1 |
| 50 | BEARING | 72385 | 1 |
| 55 | SEAL-OIL | 22818 | 1 |
| 58 | CAPSCREW 1/2-13 X 1-1/2 GD8 Z HX HD | 104322 | 2 |
| 59 | NAMEPLATE | 76381 | 1 |
| 60 | DRIVE SCREW (for NAMEPLATE) | 11842 | 4 |
| 000 | APPROVAL PLATE, PERSONNEL HANDLING (API) MODELS | NSS* | 1 |
| 82 | PRIMARY SUN GEAR (23:1 RATIO MODELS ONLY) | 25507 | 1 |
| 83 | SNAP RING (23:1 RATIO MODELS ONLY) | 24934 | 2 |
| 100 | SPRAG CLUTCH ASSEMBLY (SEE PG 11) | 81987 | 1 |
| 200 | BRAKE CYLINDER ASSEMBLY (SEE PG 10) | 82862 | 1 |
| 400 | PRIMARY PLANET CARRIER ASSY (59:1 RATIO MODELS) | 81800 | 1 |
| 400 | PRIMARY PLANET CARRIER ASSY (34:1 RATIO MODELS) | 81808 | 1 |
| 400 | PRIMARY PLANET CARRIER ASSY (23:1 RATIO MODELS) | 81811 | 1 |
| 500 | OUTPUT PLANET CARRIER ASSY (59:1 RATIO MODELS) | 81803 | 1 |
| 500 | OUTPUT PLANET CARRIER ASSY (34:1 AND 23:1 RATIO MODELS) | 81810 | 1 |
| 700 | HYDRAULIC MOTOR SUBASSEMBLY (SEE PGS 12-14) | - | 1 |
| * NOT SERVICED SEPARATELY - CONTACT FACTORY | | | |

PRIMARY PLANET CARRIER ASSY



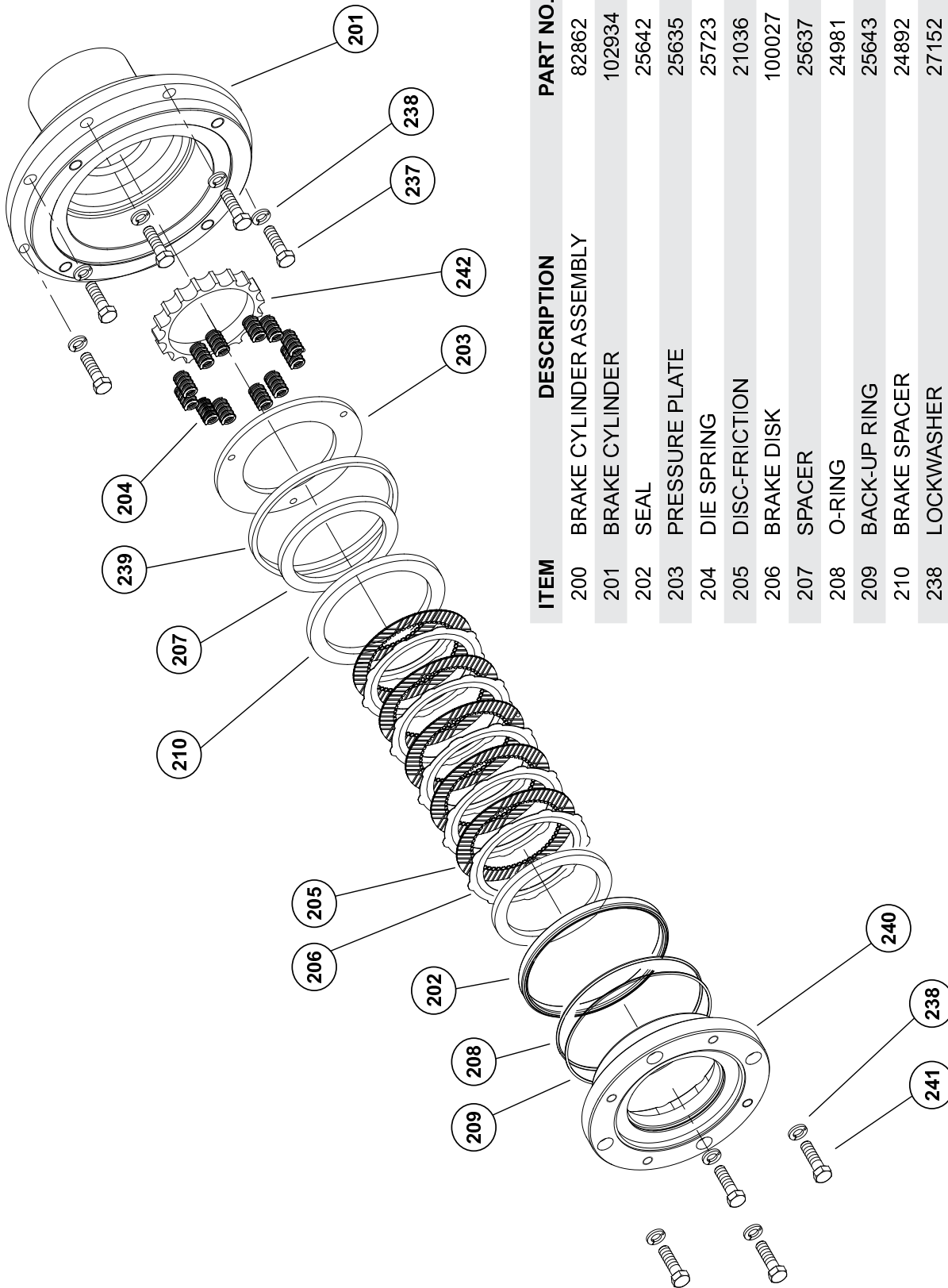
| ITEM | DESCRIPTION | PART NO. | QTY. |
|------|---|----------|------|
| 400 | PRIMARY PLANET CARRIER ASSY (59:1 RATIO MODELS) | 81800 | 1 |
| 400 | PRIMARY PLANET CARRIER ASSY (34:1 RATIO MODELS) | 81808 | 1 |
| 400 | PRIMARY PLANET CARRIER ASSY (23:1 RATIO MODELS) | 81811 | 1 |
| 411 | PRIMARY PLANET CARRIER (59:1 RATIO MODELS) | 25329 | 1 |
| 411 | PRIMARY PLANET CARRIER (34:1 RATIO MODELS) | 25513 | 1 |
| 411 | PRIMARY PLANET CARRIER (23:1 RATIO MODELS) | 25512 | 1 |
| 412 | PLANET GEAR (59:1 RATIO MODELS) | 26271 | 3 |
| 412 | PLANET GEAR (34:1 RATIO MODELS) | 26275 | 3 |
| 412 | PLANET GEAR (23:1 RATIO MODELS) | 26273 | 3 |
| 413 | PRIMARY PLANET GEAR SHAFT | 25332 | 3 |
| 414 | ROLLER BEARING | 25333 | 3 |
| 415 | THRUST WASHER | 24914 | 3 |
| 416 | ROLLPIN | 12026 | 3 |
| 433 | THRUST WASHER (59:1 RATIO MODELS) | 24913 | |
| 433 | THRUST WASHER (34:1 RATIO MODELS) | 25942 | 1 |
| 433 | THRUST WASHER (23:1 RATIO MODELS) | 27426 | |

OUTPUT PLANET CARRIER ASSY



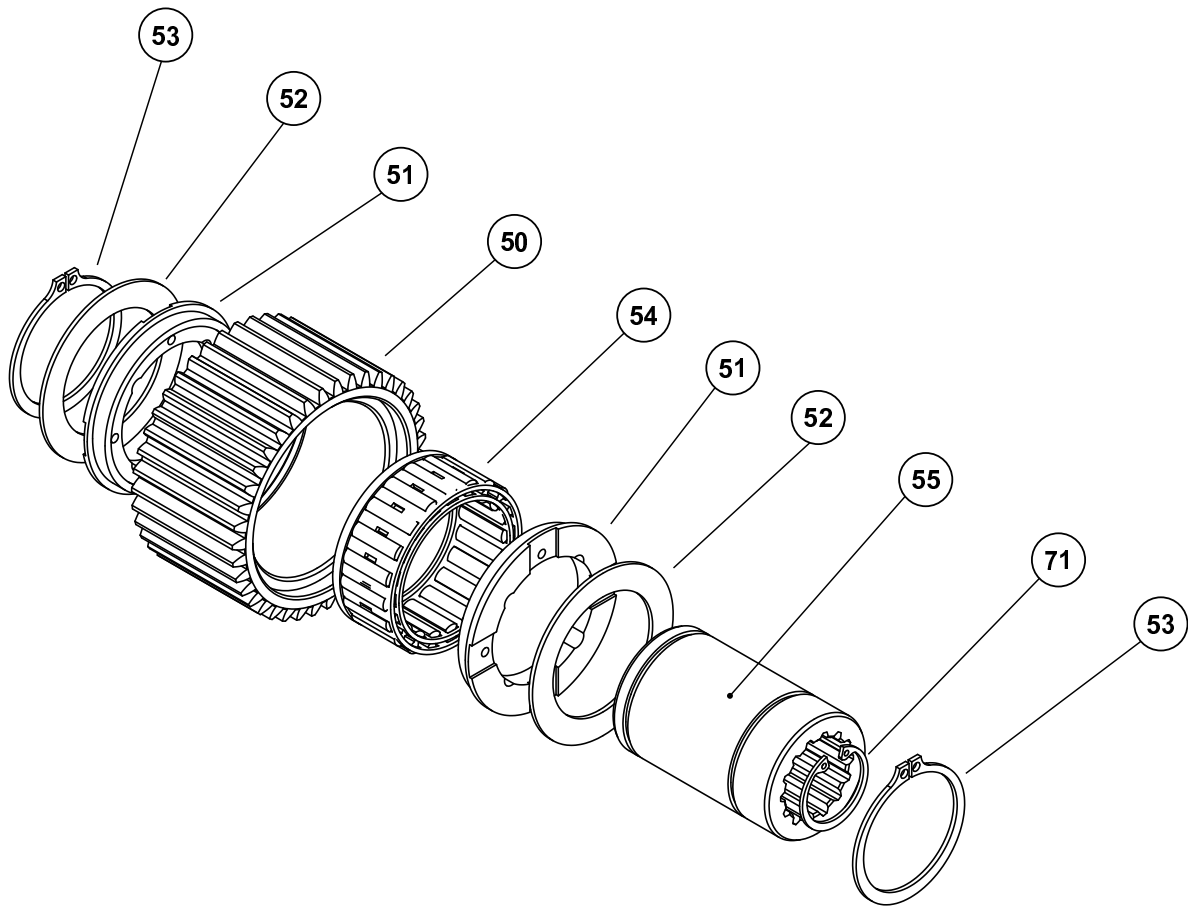
| ITEM | DESCRIPTION | PART NO. | QTY. |
|------|---|----------|------|
| 500 | OUTPUT PLANET CARRIER ASSY (59:1 RATIO MODELS) | 81803 | 1 |
| 500 | OUTPUT PLANET CARRIER ASSY (34:1 AND 23:1 RATIO MODELS) | 81810 | 1 |
| 517 | OUTPUT PLANET CARRIER (59:1 RATIO MODELS) | 25202 | 1 |
| 517 | OUTPUT PLANET CARRIER (34:1 AND 23:1 RATIO MODELS) | 25514 | 1 |
| 518 | OUTPUT PLANET GEAR (59:1 RATIO MODELS) | 26272 | 3 |
| 518 | OUTPUT PLANET GEAR (34:1 AND 23:1 RATIO MODELS) | 26274 | 3 |
| 519 | SECONDARY PLANET GEAR SHAFT | 25666 | 3 |
| 520 | ROLLER BEARING | 24175 | 6 |
| 521 | BEARING SPACER | 24890 | 3 |
| 522 | BEARING RACE | 25361 | 6 |
| 523 | ROLLPIN | 21049 | 3 |
| 534 | THRUST PLATE | 25542 | 1 |

BRAKE CYLINDER ASSEMBLY



| ITEM | DESCRIPTION | PART NO. | QTY. |
|------|-------------------------------------|----------|------|
| 200 | BRAKE CYLINDER ASSEMBLY | 82862 | 1 |
| 201 | BRAKE CYLINDER | 102934 | 1 |
| 202 | SEAL | 25642 | 1 |
| 203 | PRESSURE PLATE | 25635 | 1 |
| 204 | DIE SPRING | 25723 | 12 |
| 205 | DISC-FRICTION | 21036 | 5 |
| 206 | BRAKE DISK | 100027 | 6 |
| 207 | SPACER | 25637 | 1 |
| 208 | O-RING | 24981 | 1 |
| 209 | BACK-UP RING | 25643 | 1 |
| 210 | BRAKE SPACER | 24892 | 2 |
| 238 | LOCKWASHER | 27152 | 4 |
| 239 | PISTON BACKUP RING | 25636 | 1 |
| 240 | MOTOR SUPPORT | 102933 | 1 |
| 241 | CAPSCREW 3/8-16 X 1-3/4 GD8 Z HX HD | 104311 | 4 |
| 242 | SPRING SPACER | 100200 | 1 |

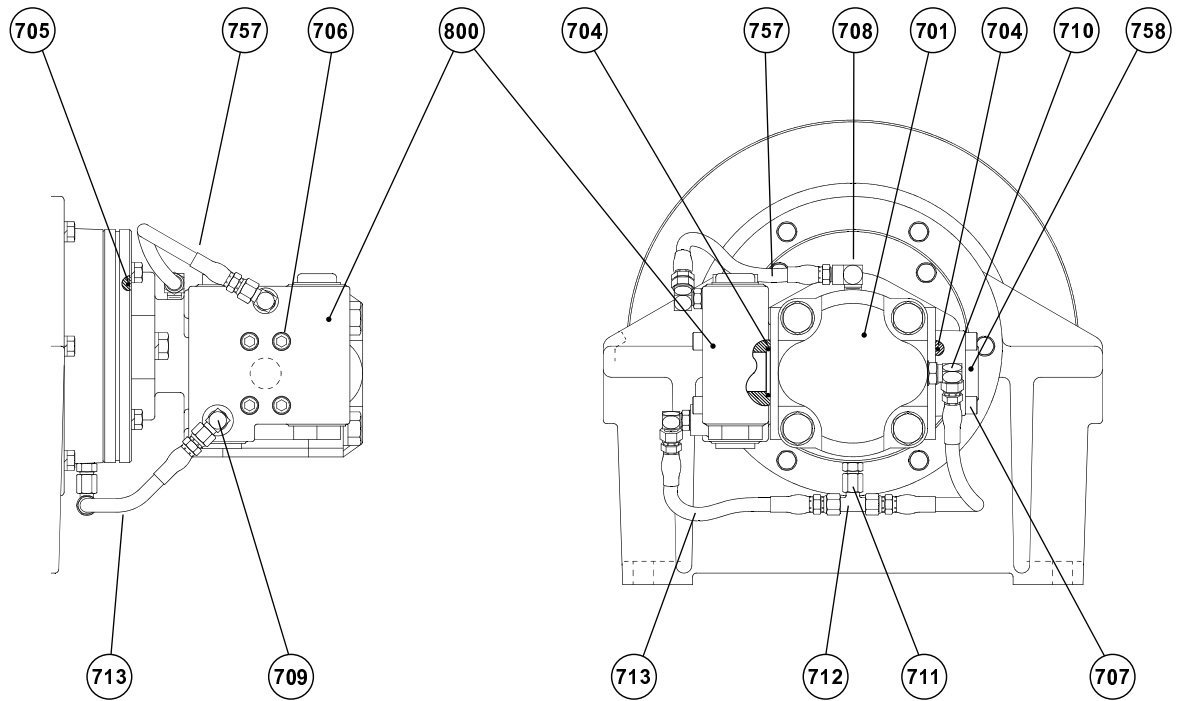
OVERRUNNING CLUTCH ASSEMBLY



| ITEM | DESCRIPTION | PART NO. | QTY. |
|------|--|----------|------|
| 100 | SPRAG CLUTCH ASSEMBLY (13-TOOTH B-MOTOR SHAFT) | 81987 | 1 |
| 149 | OUTER BRAKE RACE* | NSS* | 1 |
| 151 | SPRAG BEARING | 27684 | 2 |
| 152 | THRUST BEARING | 24581 | 2 |
| 153 | SNAP RING | 12034 | 2 |
| 154 | SPRAG CLUTCH* | NSS* | 1 |
| 156 | INNER BRAKE RACE * | NSS* | 1 |
| 171 | RETAINING RING | 32115 | 1 |

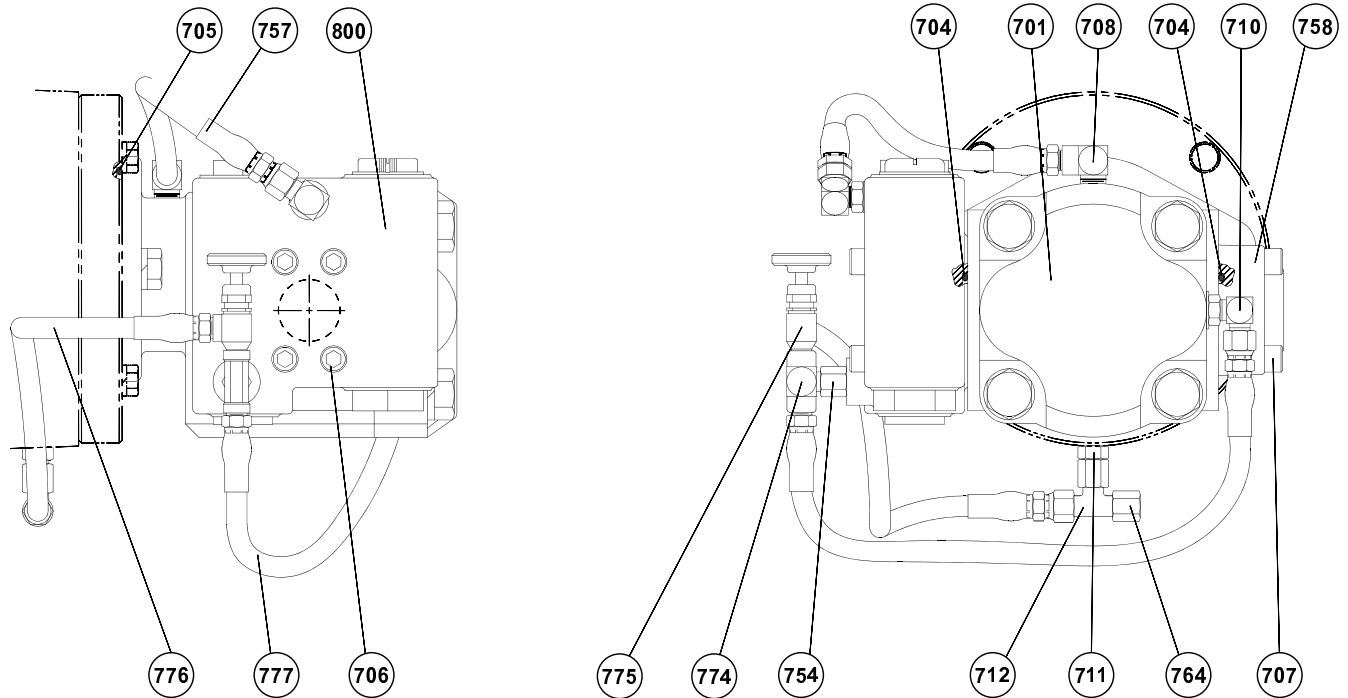
* NOT SERVICED SEPARATELY

MOTOR GROUP ASSEMBLY FOR STANDARD-ROTATION (OVERWOUND) MODELS



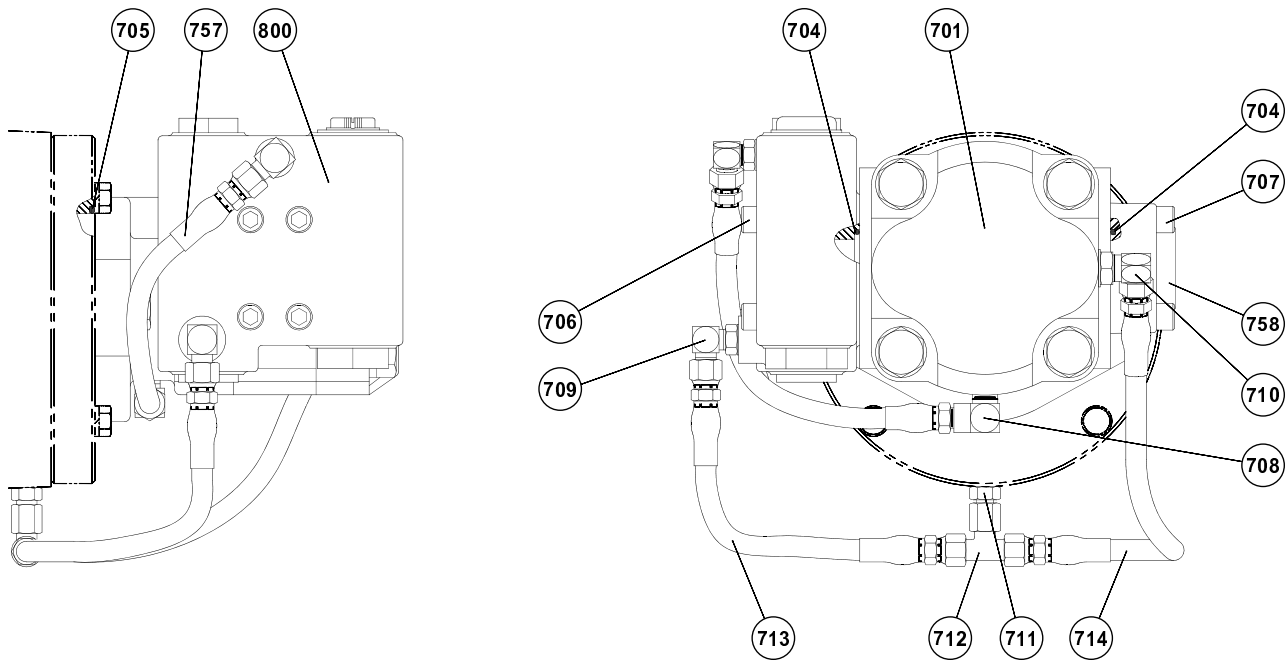
| ITEM | DESCRIPTION | PART NO. | QTY. |
|------|--|----------|------|
| 700 | HYD MOTOR SUB-ASSY (020) | 63258 | 1 |
| 700 | HYD MOTOR SUB-ASSY (029) | 63259 | 1 |
| 700 | HYD MOTOR SUB-ASSY (039) | 62248 | 1 |
| 701 | HYD MOTOR (020) | 25386 | 1 |
| 700 | HYD MOTOR (029) | 25385 | 1 |
| 700 | HYD MOTOR (039) | 25515 | 1 |
| N/A | MOTOR SEAL KIT (FOR ALL HYDRAULIC MOTORS LISTED ABOVE) | 64069 | 1 |
| 704 | O-RING | 25366 | 2 |
| 705 | O-RING | 21063 | 1 |
| 706 | CAPSCREW 3/8-16 X 2-3/4 GD8 Z HX HD | 25622 | 4 |
| 707 | CAPSCREW 3/8-16 X 1-1/4 ASTM A574 SKT HD | 13827 | 4 |
| 708 | REDUCER ELBOW | 24236 | 1 |
| 709 | ELBOW FITTING | 25302 | 1 |
| 710 | ELBOW/O-RING | 25131 | 1 |
| 711 | ADAPTER -4 ORB TO -4 JIC | 25864 | 1 |
| 712 | SWIVEL TEE | 25748 | 1 |
| 713 | HOSE ASSY -4 X 10-IN. (254 MM) | 25936 | 1 |
| 714 | HOSE ASSY -4 X 14-IN. (355 MM) | 25935 | 1 |
| 757 | HOSE ASSY -2 NPT MALE TO -4 JIC FEMALE X 10-IN. (254 MM) | 13711 | 1 |
| 758 | SPLIT FLANGE ADAPTER | 25539 | 1 |
| 800 | BRAKE VALVE ASSY - 1 | 81715 | 1 |

MOTOR GROUP ASSEMBLY FOR STANDARD-ROTATION (OVERWOUND) MODELS WITH API-REQUIRED EQUIPMENT (-1)



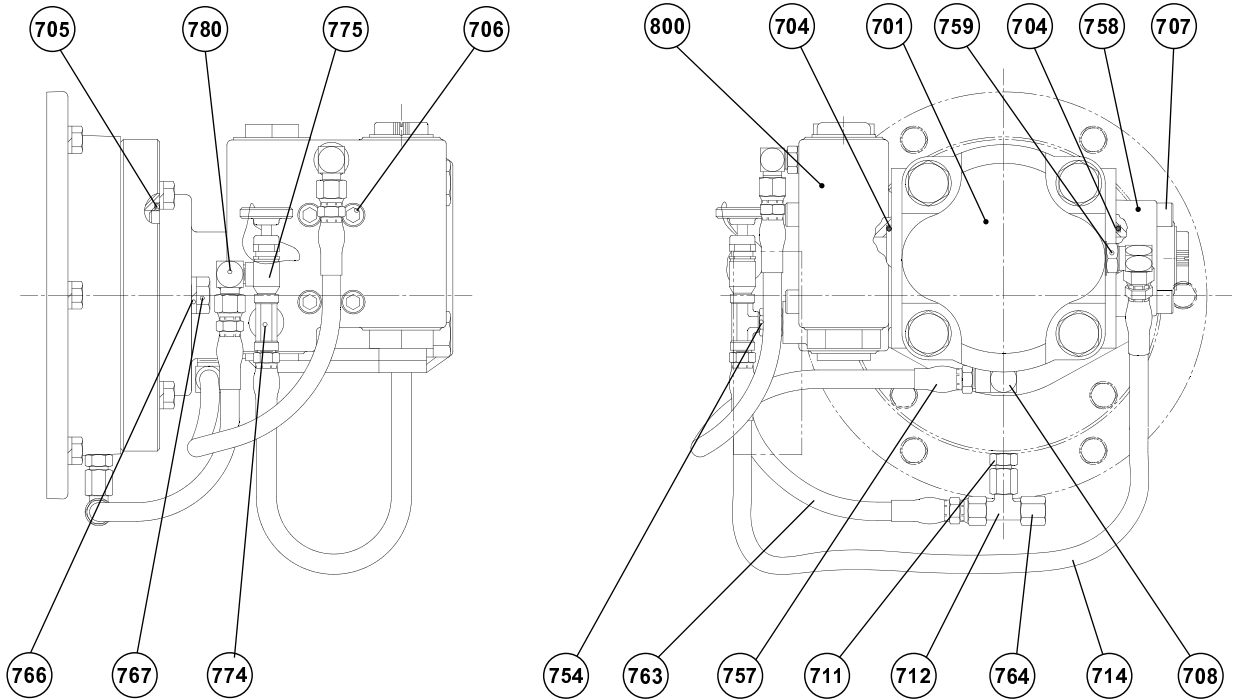
| ITEM | DESCRIPTION | PART NO. | QTY. |
|------|--|----------|------|
| 700 | HYD MOTOR SUB ASSY (039) | 61722 | 1 |
| 700 | HYD MOTOR SUB ASSY (020) | 61721 | 1 |
| 700 | HYD MOTOR SUB ASSY (029) | 62247 | 1 |
| 701 | HYD MOTOR (039) | 25515 | 1 |
| 701 | HYD MOTOR (020) | 25386 | 1 |
| 701 | HYD MOTOR (029) | 25385 | 1 |
| N/A | MOTOR SEAL KIT (FOR ALL HYDRAULIC MOTORS LISTED ABOVE) | 64069 | 1 |
| 704 | O-RING | 25366 | 2 |
| 705 | O-RING | 21063 | 1 |
| 706 | CAPSCREW 3/8-16 X 2-3/4 GD8 Z HX HD | 25622 | 4 |
| 707 | CAPSCREW 3/8-16 X 1-1/4 SKT HD | 13827 | 4 |
| 708 | REDUCER ELBOW | 24236 | 1 |
| 710 | ELBOW -4 ORB | 25131 | 1 |
| 711 | ADAPTER -4 ORB TO -4 JIC | 25864 | 1 |
| 712 | SWIVEL TEE | 25748 | 1 |
| 754 | DRAIN CONNECTOR | 24784 | 1 |
| 757 | HOSE ASSY -2 NPT MALE TO -4 JIC FEMALE X 10-IN. (254 MM) | 13711 | 1 |
| 758 | SPLIT FLANGE ADAPTER | 25539 | 1 |
| 759 | ELBOW/O-RING | 25131 | 1 |
| 764 | CAP NUT -4 | 70182 | 1 |
| 774 | TEE-MALE BRANCH | 22934 | 1 |
| 775 | NEEDLE VALVE | 25258 | 1 |
| 776 | HOSE ASSY -2 NPT MALE TO -4 JIC FEMALE X 12-IN. (304 MM) | 13704 | 1 |
| 777 | HOSE ASSY -2 NPT MALE TO -4 JIC FEMALE X 16-IN. (406 MM) | 13706 | 1 |
| 778 | WARNING TAG (NOT SHOWN) | 25257 | 1 |
| 800 | BRAKE VALVE ASSY - 1.0 - 61 | 81715 | 1 |

MOTOR GROUP ASSY FOR “-U” (UNDERWOUND) MODELS



| ITEM | DESCRIPTION | PART NO. | QTY. |
|------|--|----------|------|
| 700 | HYD MOTOR SUB-ASSY, UNDERWOUND (020) | 62321 | 1 |
| 700 | HYD MOTOR SUB-ASSY, UNDERWOUND (029) | 62371 | 1 |
| 700 | HYD MOTOR SUB-ASSY, UNDERWOUND (039) | 62343 | 1 |
| 701 | HYD MOTOR (020) | 25386 | 1 |
| 701 | HYD MOTOR (029) | 25385 | 1 |
| 701 | HYD MOTOR (039) | 25515 | 1 |
| N/A | MOTOR SEAL KIT (FOR ALL HYDRAULIC MOTORS LISTED ABOVE) | 64069 | 1 |
| 704 | O-RING | 25366 | 2 |
| 705 | O-RING | 21063 | 1 |
| 706 | CAPSCREW 3/8-16 X 2-3/4 GD8 Z HX HD | 25622 | 4 |
| 707 | CAPSCREW 3/8-16 X 1-1/4 SKT HD | 13827 | 4 |
| 708 | REDUCER ELBOW | 24236 | 1 |
| 709 | ELBOW FITTING | 25302 | 1 |
| 710 | ELBOW/O-RING | 25131 | 1 |
| 711 | ADAPTER -4 ORB TO -4 JIC | 25864 | 1 |
| 712 | SWIVEL TEE | 25748 | 1 |
| 713 | HOSE ASSY -4 X 10-IN. (254 MM) | 25936 | 1 |
| 714 | HOSE ASSY -4 X 14-IN. (355 MM) | 25935 | 1 |
| 757 | HOSE ASSY -2 NPT MALE TO -4 JIC FEMALE X 10-IN. (254 MM) | 13711 | 1 |
| 758 | SPLIT FLANGE ADAPTER | 25539 | 1 |
| 800 | BRAKE VALVE ASSY - 1.0 - 61 | 81715 | 1 |

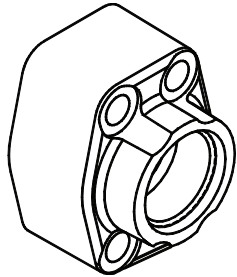
MOTOR GROUP ASSEMBLY FOR “-U” (UNDERWOUND) MODELS WITH API-REQUIRED EQUIPMENT (-1)



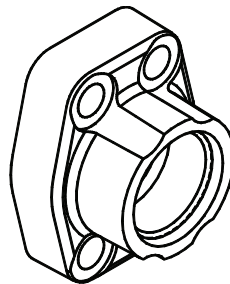
| ITEM | DESCRIPTION | PART NO. | QTY. |
|------|--|----------|------|
| 700 | HYD MOTOR SUBASSY (029) -U w/API | 63363 | 1 |
| 700 | HYD MOTOR SUBASSY (039) -U w/API | 63288 | 1 |
| 701 | HYD MOTOR (029) -U API | 25385 | 1 |
| 701 | HYD MOTOR (039) -U API | 25515 | 1 |
| N/A | MOTOR SEAL KIT (FOR ALL HYDRAULIC MOTORS LISTED ABOVE) | 64069 | 1 |
| 704 | 056 O-RING | 25366 | 2 |
| 705 | 024 O-RING | 21063 | 1 |
| 706 | CAPSCREW 3/8-16 X 2-3/4 GD8 Z HX HD | 25622 | 4 |
| 707 | CAPSCREW 3/8-16 X 1-1/4 ASTM A574 SKT HD | 13827 | 4 |
| 708 | 062 REDUCER ELBOW | 24236 | 1 |
| 710 | 060 ELBOW/O-RING | 25131 | 1 |
| 711 | ADAPTER -4 ORB TO -4 JIC | 25864 | 1 |
| 712 | 070 SWIVEL TEE | 25748 | 1 |
| 714 | HOSE ASSY -4 X 14-IN. (355 MM) | 25935 | 1 |
| 754 | 071 DRAIN CONNECTOR | 24784 | 1 |
| 757 | HOSE ASSY -2 NPT MALE TO -4 JIC FEMALE X 10-IN. (254 MM) | 13711 | 1 |
| 758 | 061 SPLIT FLANGE ADAPTER | 25539 | 1 |
| 763 | HOSE ASSY -4 X 17-IN. (431.8 MM) | 25750 | 1 |
| 764 | 072 16445-4 CAP NUT | 70182 | 1 |
| 766 | LOCKWASHER 1/2 Z | 11026 | 2 |
| 767 | CAPSCREW 1/2-13 X 1-1/2 GD8 Z HX HD | 104322 | 2 |
| 774 | 057 TEE-MALE BRANCH | 22934 | 1 |
| 775 | 073 NEEDLE VALVE | 25258 | 1 |
| 778 | 076 WARNING TAG | 25257 | 1 |
| 780 | 080 2685008 ELBOW TBG FT | 21163 | 1 |
| 800 | 054 BRAKE VALVE ASSY - 1 | 81715 | 1 |

MOTOR GROUP ASSEMBLY ADAPTERS AND CONTROL CIRCUIT FOR GEAR MOTORS 020, 029, AND 039

SPLIT FLANGE ADAPTER (25539)

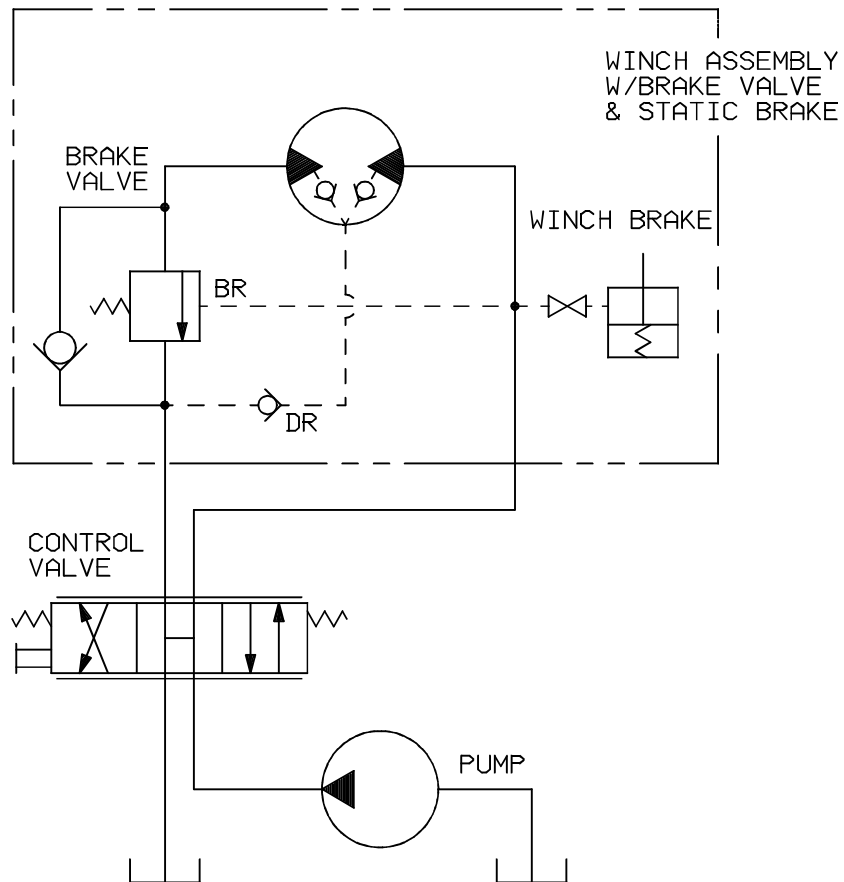


EARLY - Use socket head capscrews 13544.

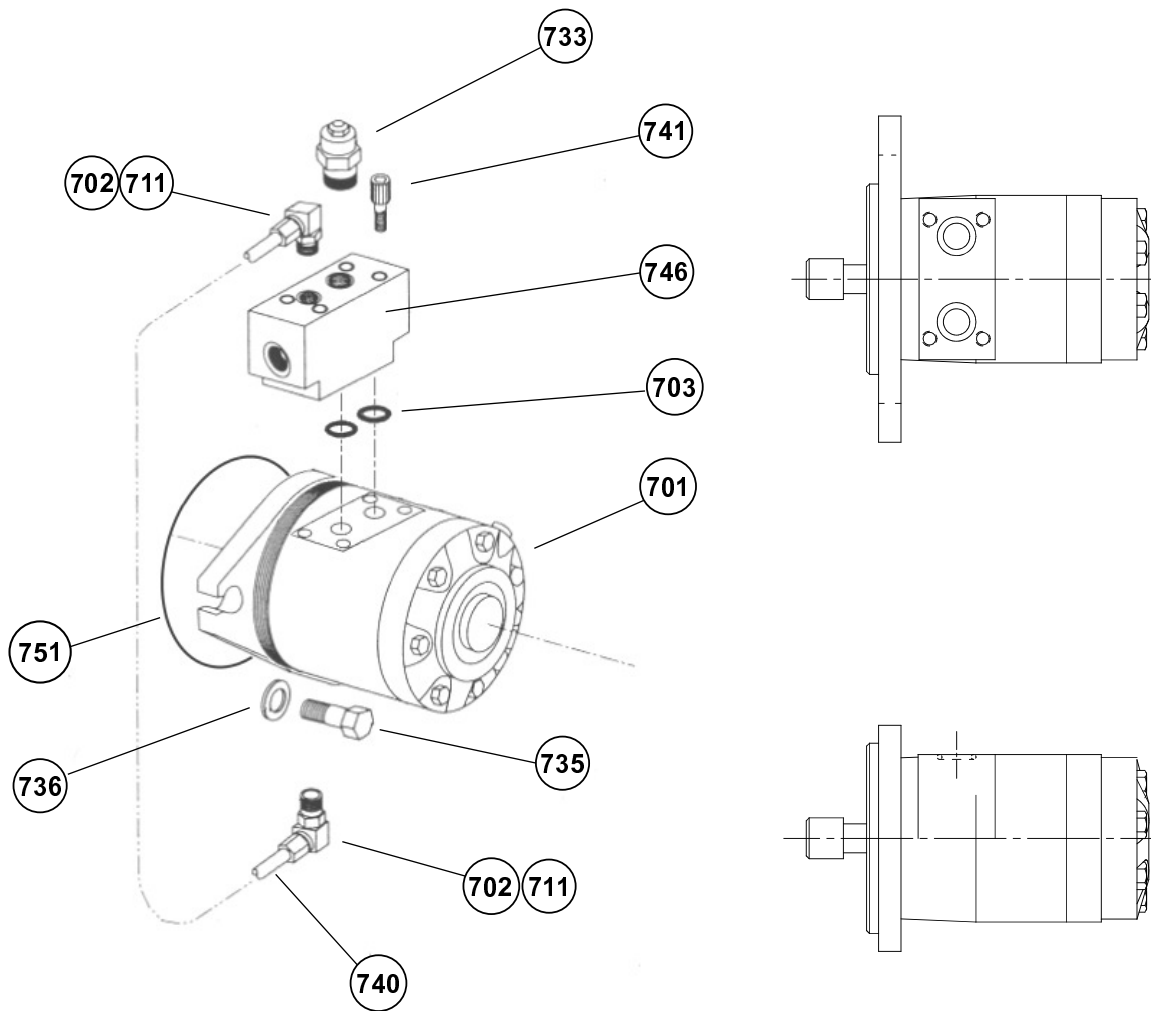


CURRENT - Use socket head capscrews 13827.

HOIST CONTROL CIRCUIT (TYPICAL)

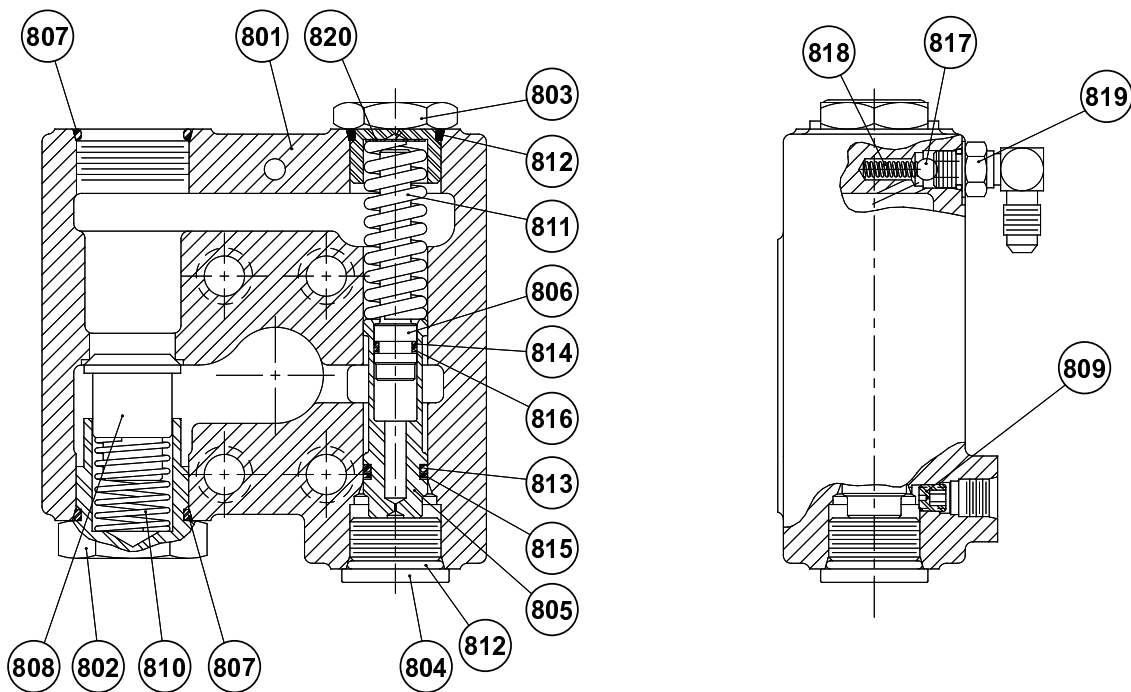


MOTOR GROUP ASSY, 062 HYDRAULIC MOTOR



| ITEM | DESCRIPTION | PART NO. | QTY. |
|------|---------------------------------------|----------|------|
| 700 | MOTOR SUB-ASSY (062) | 62503 | 1 |
| 701 | MOTOR, HYDRAULIC (062) | 106079 | 1 |
| 702 | SWIVEL NUT 90 DEG. ELBOW | 26140 | 2 |
| 703 | O-RING | 12273 | 2 |
| 711 | ADAPTER -4 JIC TO -4 ORB | 25864 | 2 |
| 733 | COUNTERBALANCE VALVE* CARTRIDGE | 27258 | 1 |
| N/A | COUNTERBALANCE VALVE SEAL KIT | 29872 | 1 |
| 735 | CAPSCREW 1/2-13 X 1-1/4 GD8-Z HX HD | 104174 | 2 |
| 736 | LOCKWASHER 1/2 Z | 11026 | 2 |
| 740 | HOSE ASSY -4 X 20-IN. (508 MM) | 25952 | 1 |
| 741 | CAPSCREW 5/16-18 X 3 ASTM A574 SKT HD | 29631 | 4 |
| 751 | O-RING | 21063 | 1 |
| 746 | BRAKE VALVE BLOCK | 27403 | 1 |

BRAKE VALVE ASSY FOR GEAR MOTORS 020, 029, AND 039



| ITEM | DESCRIPTION | PART NO. | QTY. |
|------|--------------------------------|----------|------|
| 800 | BRAKE VALVE ASSEMBLY | 81715 | 1 |
| 801 | BRAKE VALVE HOUSING | NSS* | 1 |
| 802 | VALVE SPRING RETAINER | 24424 | 1 |
| 803 | SPRING RETAINER | 24183 | 1 |
| 804 | PLUG | 22450 | 1 |
| 805 | SPOOL | NSS* | 1 |
| 806 | DAMPER PISTON | NSS* | 1 |
| 807 | O-RING | 24186 | 2 |
| 808 | CHECK VALVE POPPET | 24423 | 1 |
| 809 | PILOT ORIFICE | 24200 | 1 |
| 810 | CHECK VALVE SPRING | 24190 | 1 |
| 811 | SPOOL SPRING | 24192 | 1 |
| 812 | O-RING | 23601 | 1 |
| 813 | O-RING | 24193 | 1 |
| 814 | O-RING | 24194 | 1 |
| 815 | BACK-UP RING | 24195 | 1 |
| 816 | BACK-UP RING | 24196 | 1 |
| 817 | BALL, STEEL | 21158 | 1 |
| 818 | COMPRESSION SPRING | 25480 | 1 |
| 819 | ELBOW FITTING | 25302 | 1 |
| 820 | SHIPPING PLUG HYD | 25403 | 1 |
| 821 | SHIPPING PLUG | 25487 | 1 |
| 822 | SHIM, VALVE SPRING (NOT SHOWN) | 25661 | 1-2 |

METRIC CONVERSION TABLE

| English to Metric | | | Metric to English | | |
|---------------------------------|-----------|---|---|------------|-----------------------------------|
| LINEAR | | | | | |
| inches (in.) | X 25.4 | = millimeters (mm) | millimeters (mm) | X 0.03937 | = inches (in.) |
| feet (ft.) | X 0.3048 | = meters (m) | meters (m) | X 3.281 | = feet (ft.) |
| miles (mi.) | X 1.6093 | = kilometers (km) | kilometers (km) | X 0.6214 | = miles (mi.) |
| AREA | | | | | |
| inches ² (sq.in.) | X 645.15 | = millimeters ² (mm ²) | millimeters ² (mm ²) | X 0.000155 | = inches ² (sq.in.) |
| feet ² (sq.ft.) | X 0.0929 | = meters ² (m ²) | meters ² (m ²) | X 10.764 | = feet ² (sq.ft.) |
| VOLUME | | | | | |
| inches ³ (cu.in.) | X 0.01639 | = liters (l) | liters (l) | X 61.024 | = inches ³ (cu.in.) |
| quarts (qts.) | X 0.94635 | = liters (l) | liters (l) | X 1.0567 | = quarts (qts.) |
| gallons (gal.) | X 3.7854 | = liters (l) | liters (l) | X 0.2642 | = gallon (gal.) |
| inches ³ (cu.in.) | X 16.39 | = centimeters ³ (cc) | centimeters ³ (cc) | X 0.06102 | = inches ³ (cu.in.) |
| feet ³ (cu.ft.) | X 28.317 | = liters (l) | liters (l) | X 0.03531 | = feet ³ (cu.ft.) |
| feet ³ (cu.ft.) | X 0.02832 | = meters ³ (m ³) | meters ³ (m ³) | X 35.315 | = feet ³ (cu.ft.) |
| fluid ounce (fl.oz.) | X 29.57 | = milliliters (ml) | milliliters (ml) | X 0.03381 | = fluid ounce (fl.oz.) |
| MASS | | | | | |
| ounces (oz.) | X 28.35 | = grams (g) | grams (g) | X 0.03527 | = ounces (oz.) |
| pounds (lbs.) | X 0.4536 | = kilograms (kg) | kilograms (kg) | X 2.2046 | = pounds (lbs.) |
| tons (2000 lbs.) | X 907.18 | = kilograms (kg) | kilograms (kg) | X 0.001102 | = tons (2000 lbs.) |
| tons (2000 lbs.) | X 0.90718 | = metric tons (t) | metric tons (t) | X 1.1023 | = tons (2000 lbs.) |
| tons (long) (2240 lbs.) | X 1013.05 | = kilograms (kg) | kilograms (kg) | X 0.000984 | = tons (long) (2240 lbs.) |
| PRESSURE | | | | | |
| inches Hg (60 °F) | X 3600 | = kilopascals (kPa) | kilopascals (kPa) | X 0.2961 | = inches Hg (60 °F) |
| pounds/sq.in. (PSI) | X 6.895 | = kilopascals (kPa) | kilopascals (kPa) | X 0.145 | = pounds/sq.in. (PSI) |
| pounds/sq.in. (PSI) | X 0.0703 | = kilograms/sq.cm. (kg/cm ²) | kilograms/sq.cm. (kg/cm ²) | X 14.22 | = pounds/sq.in. (PSI) |
| pounds/sq.in. (PSI) | X 0.069 | = bars | bars | X 14.5 | = pounds/sq.in. (PSI) |
| inches H ₂ O (60 °F) | X 0.2488 | = kilopascals (kPa) | kilopascals (kPa) | X 4.0193 | = inches H ₂ O (60 °F) |
| bars | X 100 | = kilopascals (kPa) | kilopascals (kPa) | X 0.01 | = bars |
| POWER | | | | | |
| horsepower (hp) | X 0.746 | = kilowatts (kW) | kilowatts (kW) | X 1.34 | = horsepower (hp) |
| ft.-lbs./min. | X 0.0226 | = watts (W) | watts (W) | X 44.25 | = ft.-lbs./min. |
| TORQUE | | | | | |
| pound-inches (in.-lbs.) | X 0.11298 | = newton-meters (N-m) | newton-meters (N-m) | X 8.851 | = pound-inches (in.-lbs.) |
| pound-feet (ft.-lbs.) | X 1.3558 | = newton-meters (N-m) | newton-meters (N-m) | X 0.7376 | = pound-feet (ft.-lbs.) |
| pound-feet (ft.-lbs.) | X .1383 | = kilograms/meter (kg-m) | kilogram/meter (kg-m) | X 7.233 | = pound-feet (ft.-lbs.) |
| VELOCITY | | | | | |
| miles/hour (m/h) | X 0.11298 | = kilometers/hour (km/hr) | kilometers/hour (km/hr) | X 0.6214 | = miles/hour (m/h) |
| feet/second (ft./sec.) | X 0.3048 | = meter/second (m/s) | meters/second (m/s) | X 3.281 | = feet/second (ft./sec.) |
| feet/minute (ft./min.) | X 0.3048 | = meter/minute (m/min) | meters/minute (m/min) | X 3.281 | = feet/minute (ft./min.) |
| TEMPERATURE | | | | | |
| °Celsius = 0.556 (°F - 32) | | | °Fahrenheit = (1.8 °C) + 32 | | |
| COMMON METRIC PREFIXES | | | | | |
| mega | (M) | = 1,000,000 or 10 ⁶ | deci | (d) | = 0.1 or 10 ⁻¹ |
| kilo | (k) | = 1,000 or 10 ³ | centi | (c) | = 0.01 or 10 ⁻² |
| hecto | (h) | = 100 or 10 ² | milli | (m) | = 0.001 or 10 ⁻³ |
| deka | (da) | = 10 or 10 ¹ | micro | (µ) | = 0.000.001 or 10 ⁻⁶ |

BRADEN
CARCO
Gearmatic

PACCAR WINCH
800 East Dallas Street
Broken Arrow, OK 74012
www.paccarwinch.com