

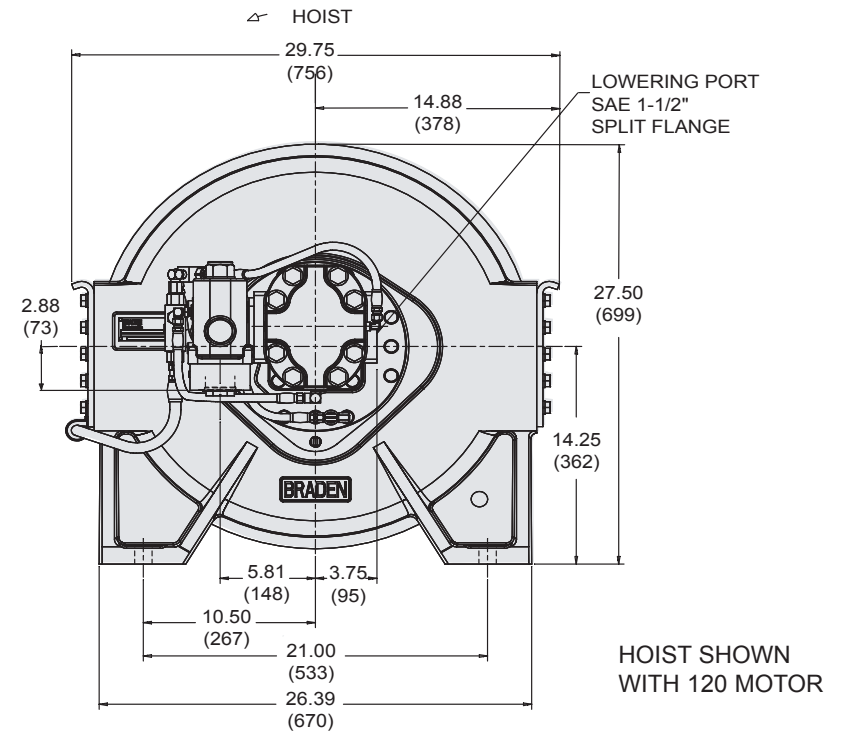
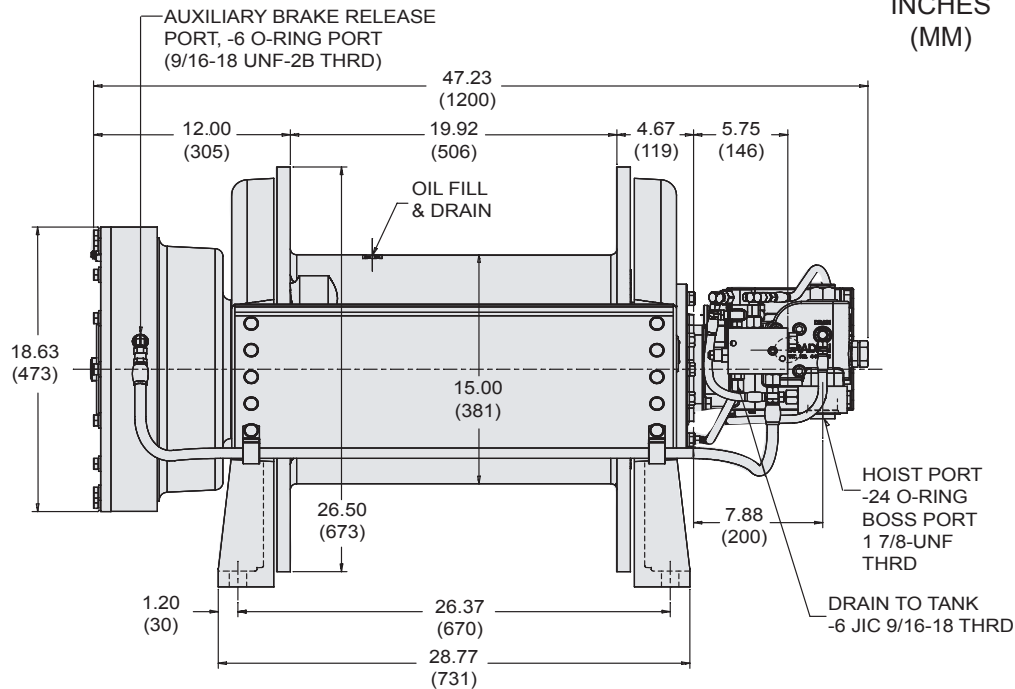
CH210A - AB - 01 DRUM

18,300 LB First Layer Line Pull

BRADEN®

DIMENSIONAL INFORMATION

DIMENSIONS SHOWN:
INCHES
(MM)



AUXILIARY BRAKE FEATURES

- Completely enclosed, allowing all parts to run in oil
- No periodic adjustment required
- All components are protected from exposure to the environment
- Easy to service and test

HOIST FEATURES

- High Efficiency Planetary Gearing
- Optional Hydraulic Motor Sizes
- High Capacity Overrunning Clutch
- Patented Braden Brake Valve for Smooth Operation

PACCAR WINCH DIVISION
P.O. BOX 547 BROKEN ARROW, OK U.S.A. 74013
PHONE (918) 251-8511 FAX (918) 259-1575
www.paccarwinch.com

PERFORMANCE INFORMATION

SINGLE SPEED 36:1 RATIO DRUM LBS. WEIGHT															
ROPE SIZE (IN.)	LAYER	090 MOTOR 9.02 CU. IN. DISP. 2900 PSI @ 125 GPM				110 MOTOR 11.03 CU. IN. DISP. 2900 PSI @ 155 GPM				120 MOTOR 12.03 CU. IN. DISP. 2900 PSI @ 170 GPM				ROPE CAPACITY	
		LINE PULL		LINE SPEED		LINE PULL		LINE SPEED		LINE PULL		LINE SPEED		(FEET)	(M)
		(LBS.)	(KG)	(FPM)	(MPM)	(LBS.)	(KG)	(FPM)	(MPM)	(LBS.)	(KG)	(FPM)	(MPM)		
3/4	1	12,300	5,595	366	112	15,500	7040	347	106	17,100	7,760	351	107	109	33
	2	11,200	5,110	401	122	14,100	6425	380	116	15,600	7,085	385	117	228	69
	3	10,300	4,700	436	133	13,000	5915	414	126	14,300	6,520	418	127	358	109
	4	9,600	4,355	471	144	12,000	5475	447	136	13,300	6,035	452	138	498	152
	5	8,900	4,055	505	154	11,200	5095	480	146	12,400	5,620	485	148	649	198
	6	8,300	3,790	540	165	10,500	4770	513	156	11,600	5,260	519	158	810	247
	7	7,800	3,565	575	175	9,800	4475	546	166	10,900	4,935	552	168	982	299
7/8	1	12,200	5,555	369	112	15,400	6980	350	107	16,900	7,700	354	108	94	29
	2	11,000	5,000	409	125	13,800	6290	389	119	15,300	6,935	393	120	199	61
	3	10,000	4,550	450	137	12,600	5725	427	130	13,900	6,310	432	132	314	96
	4	9,100	4,175	491	150	11,500	5250	466	142	12,800	5,785	471	144	439	134
	5	8,500	3,855	532	162	10,700	4845	505	154	11,800	5,345	511	156	575	175
	6	7,900	3,480	572	174	9,900	4500	543	165	10,900	4,965	550	168	721	220

MINIMUM FLOW RECOMMENDATION FOR SMOOTH OPERATION
(RECOMMENDED MINIMUM SYSTEM FLOW SHOULD BE 2X THESE VALUES)

MOTOR	GPM	LPM
090	24	91
110	27	102
120	28	106
128/064	CONSULT FACTORY	

OPTIONS

Consult the factory for high pressure piston motors.

2-SPEED MOTOR 36:1 RATIO 2900 PSI @ 85 GPM DRUM LBS. WEIGHT											
ROPE SIZE (IN.)	LAYER	LOW SPEED 12.74 CU. IN. DISP.				HIGH SPEED 6.37 CU. IN. DISP.				ROPE CAPACITY	
		LINE PULL		LINE SPEED		LINE PULL		LINE SPEED		(FEET)	(M)
		(LBS.)	(KG)	(FPM)	(MPM)	(LBS.)	(KG)	(FPM)	(MPM)		
3/4	1	18,300	8,330	147	45	7,100	3,215	317	97	109	33
	2	16,700	7,610	161	49	6,400	2,930	347	106	228	69
	3	15,400	7,000	175	53	5,900	2,700	377	115	358	109
	4	14,300	6,480	189	58	5,500	2,500	407	124	498	152
	5	13,300	6,035	203	62	5,100	2,325	438	133	649	198
	6	12,400	5,645	217	66	4,800	2,175	468	143	810	247
	7	11,700	5,305	231	70	4,500	2,045	498	152	982	299
7/8	1	18,200	8,270	148	45	7,000	3,185	319	97	94	29
	2	16,400	7,445	164	50	6,300	2,875	355	108	199	61
	3	14,900	6,770	181	55	5,700	2,615	390	119	315	96
	4	13,700	6,215	197	60	5,300	2,395	425	130	439	134
	5	12,600	5,735	213	65	4,900	2,215	460	140	575	175
	6	11,700	5,330	230	70	4,500	2,055	496	151	721	220

NOTES

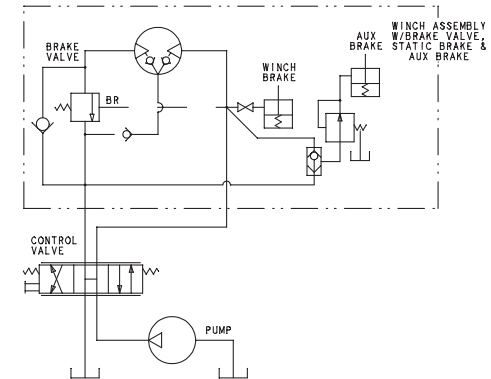
Specifications are subject to change without notification and without incurring obligation.

Pressure and flow shown are the maximum allowable for the particular combination of winch, ratio, motor and drum.

Specifications in this publication are theoretical and may vary depending on hydraulic system, environment, etc.

Line pulls are maximum ratings for the winch only. Wire rope ratings may be lower than the winch rating. Consult the wire rope manufacturer for ratings

HYDRAULIC CIRCUIT



▲ WARNING ▲

A minimum of 5 wraps of wire rope must be left on the drum to prevent the load from being supported by the wire rope anchor alone. Since the wire rope anchor is not designed to hold the rated load, failure to leave 5 wraps of wire rope on the drum could cause the load to drop, which could result in property damage, injury or death.