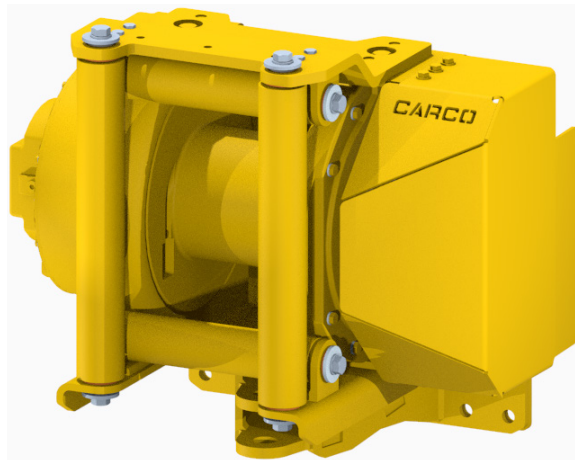


H40R Recovery Tail Winch

PARTS LIST



WRITE WINCH SERIAL NUMBER BELOW

--	--	--	--	--	--	--	--	--	--



**First 2 numbers indicate
year manufactured**

For serial number location see page 3

Visit our website at www.paccarwinch.com for the most comprehensive collection of winch, hoist, and drive information on the Internet. Most publications and specification sheets are available for downloading.

Table of Contents

Foreword	2
Model Identification.....	3
Explanation of Model Number	3
Explanation of Part Numbers.....	3
H40R Winch, Part Number 09165	4
H40R Winch, Part Number 09208	5
H40R Winch, Part Number 09209	6
H40R Winch, Part Number 09151	7
H40R Winch, Part Number 09210	8
H40R Winch, Part Number 09211	9
H40R Winch, Part Number 09167	10
H40R Winch, Part Number 09212	11
H40R Winch, Part Number 09213	12
H40R Winch, Part Number 09166	13
H40R Winch, Part Number 09214	14
H40R Winch, Part Number 09215	15
Base Winch Cross-section View, Part Number 88201	16
Base Winch Exploded View, Part Number 88201	17
Base Winch Overview	18
Gear Housing Group	19
Planet Carrier Assembly, Part number 83080	20
Planet Carrier Assembly, Part number 81829	21
Drum Group	22
Brake Assembly.....	23
Motor Group	24
Hydraulic Motor Assembly.....	25
Control Valve, Part Number 84713.....	26
Free-spool Assembly.....	27
Roller Fairlead Options, Part Numbers 84636, 84840, 84648	29

FOREWORD

Read this entire publication and retain it for future reference.

For inquiries regarding your CARCO H40R tail winch or this publication, please contact the CARCO Service Department at 918-251-8511, Monday through Friday, 8:00 a.m. to 4:30 p.m. (CST).

This parts list has been prepared to provide maintenance information for the CARCO H40R tail winch.

Some illustrations in this manual may show details or attachments different from your winch. Some components have been removed for illustrative purposes. Drawings in this manual represent a typical unit sold through our distribution channels. Some winches, particularly those sold directly to original equipment manufacturers, may differ in appearance and options.

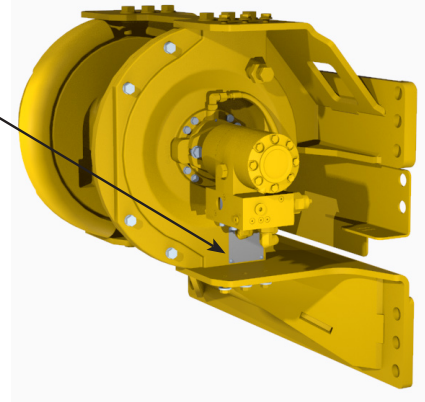
MODEL IDENTIFICATION

Model, serial, and part numbers are located to the left side of the hydraulic motor, stamped into the base.

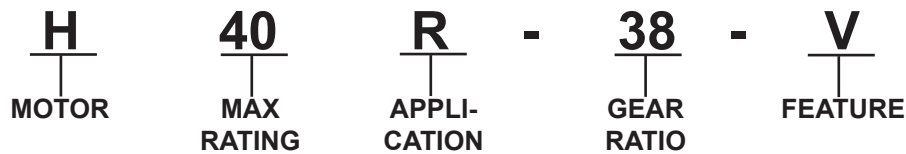
Always refer to the model, serial, and part numbers when requesting information or service parts.

TO ORDER:

1. Locate part number and serial number of winch.
2. Refer to the part-number drawing, select the component(s) needed, and note item number.
3. Find item number on parts list and note component part number(s).
4. Call or email the PACCAR Winch Sales Department at 918-259-1515 or winchsales@paccar.com.



EXPLANATION OF MODEL NUMBER



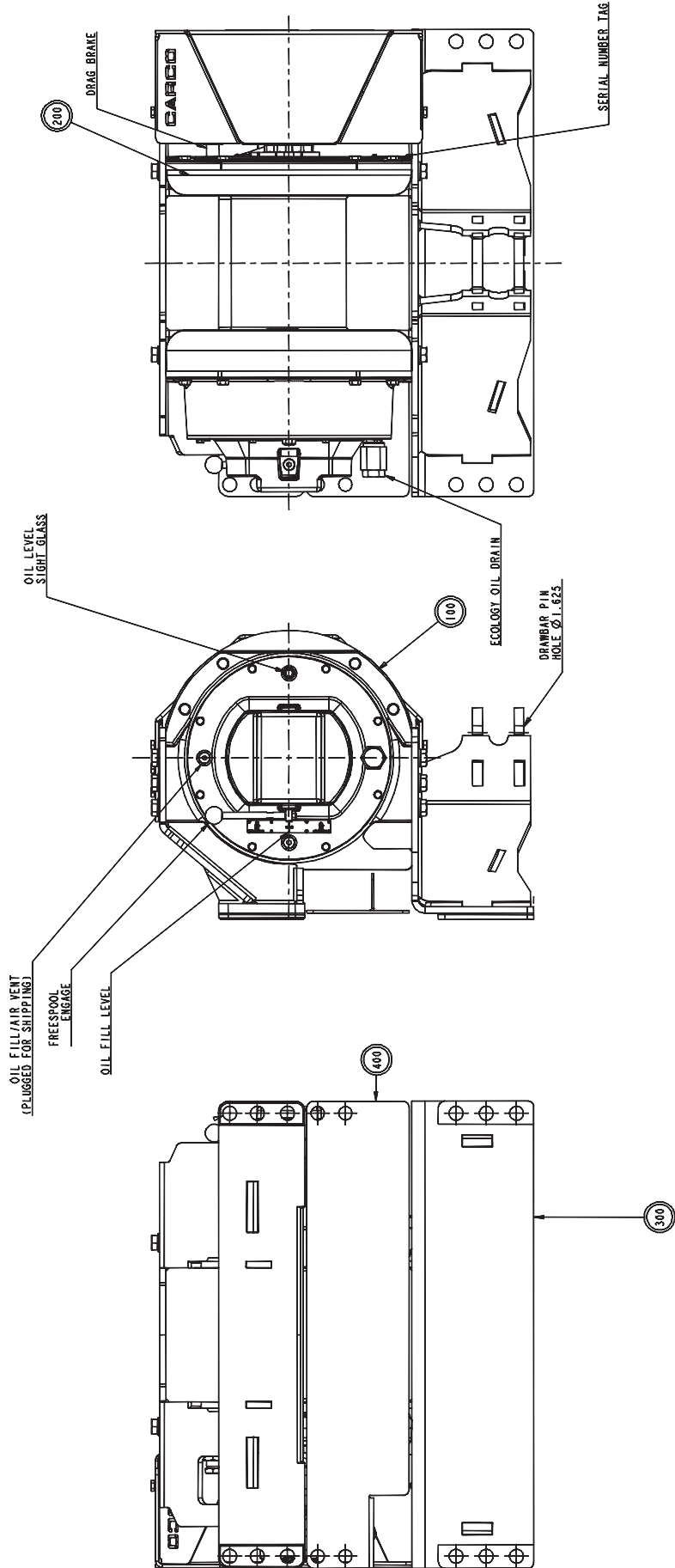
- | | |
|-----------|------------------------------------|
| H | Hydraulic |
| 40 | 40,000-pound first-layer line pull |
| R | Recovery tail winch |
| 38 | Gear ratio 38:1 |
| V | Variable speed control |

EXPLANATION OF PART NUMBERS

DESCRIPTION	NO ROLLERS HAWSE ONLY	WITH 2-VERTICAL ROLLER ASSY	WITH 4-ROLLER ASSY
H40R Caterpillar D3K-D5K with drawbar	09165	09208	09209
H40R Caterpillar D3K-D5K without drawbar	09151	09210	09211
H40R John Deere 450K-650K with drawbar	09167	09212	09213
H40R John Deere 450K-650K without drawbar	09166	09214	09215

H40R WINCH

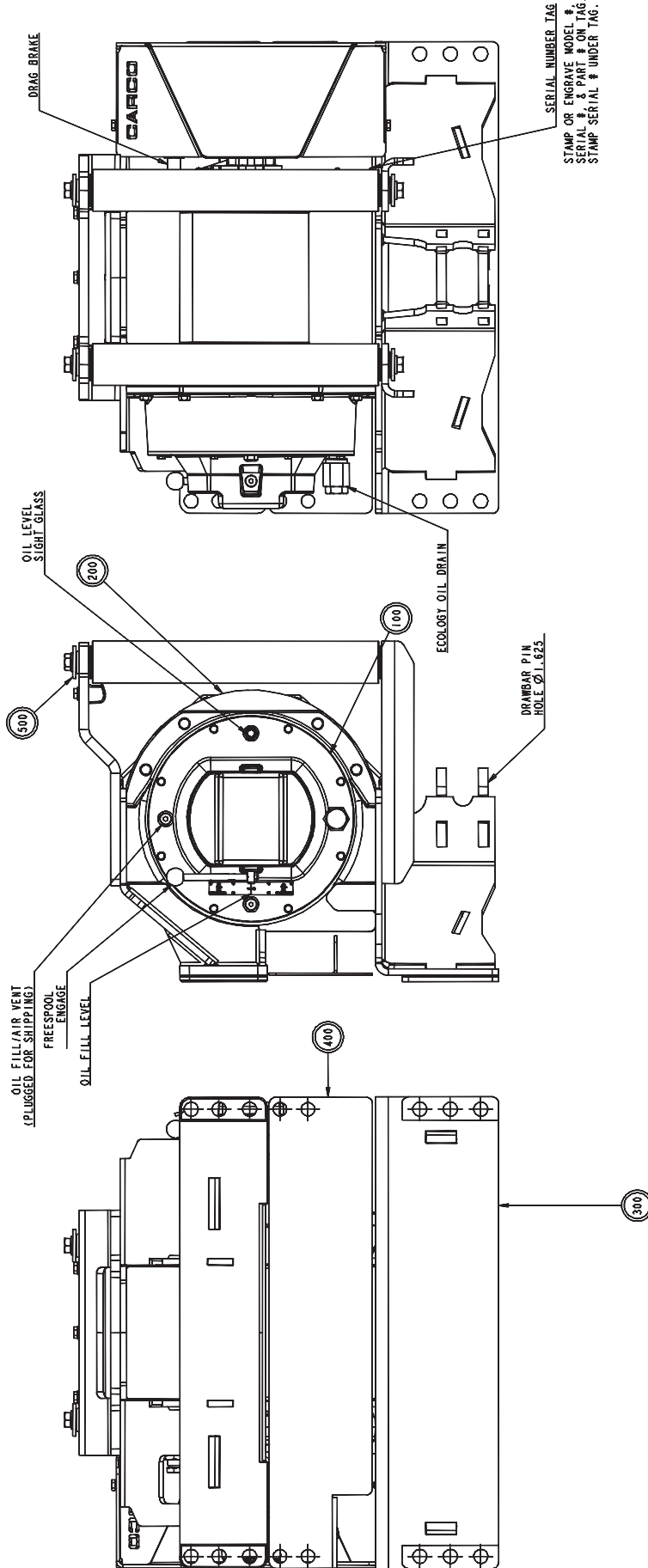
Part number 09165



PART NUMBER 09165 – CAT D3K-D5K WITH DRAWBAR – NO ROLLERS			
ITEM NO.	DESCRIPTION	PART NO.	QTY.
100	H40R-38V-142/071	88201	1
200	Hawse group	65183	1
300	Mount group, Caterpillar, with drawbar	65218	1
400	Ship loose CAT D3K/D4K/D5K T4F	65185	1

H40R WINCH

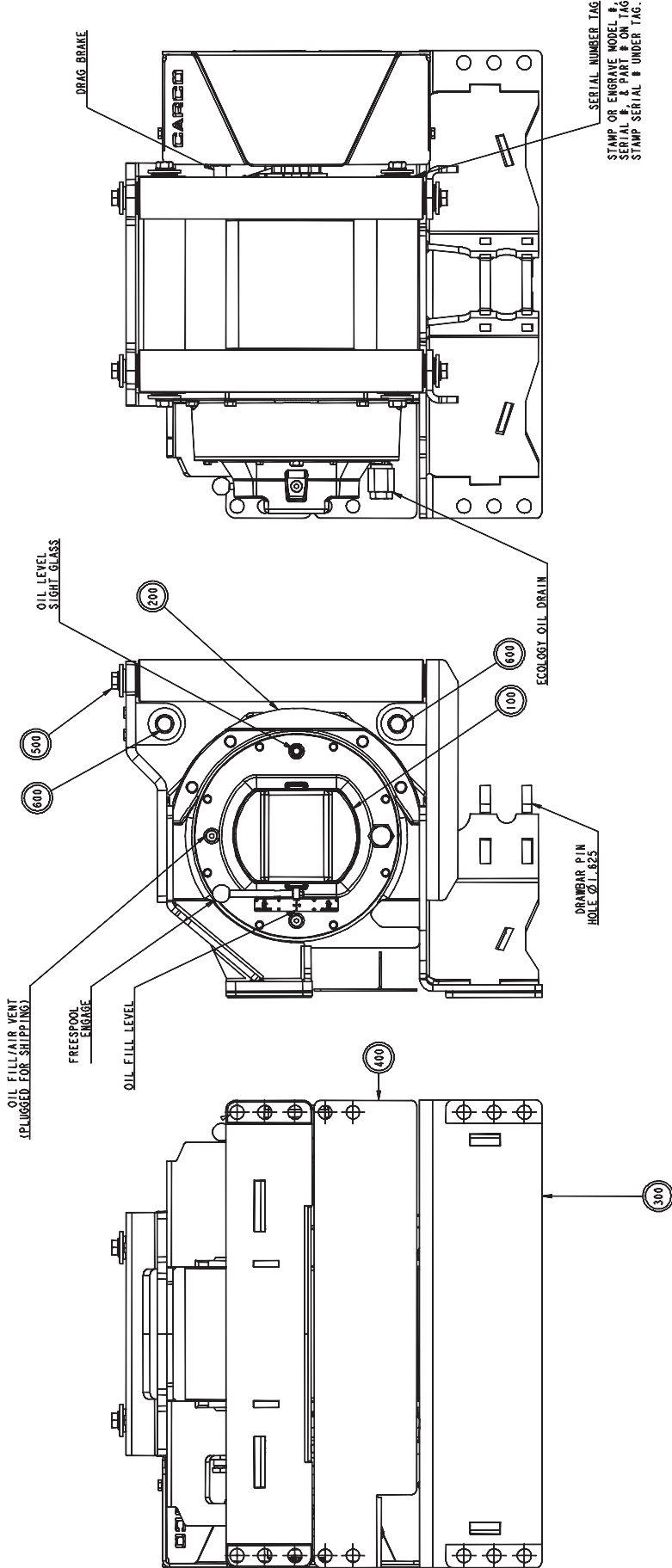
Part number 09208



PART NUMBER 09208 – CAT D3K-D5K WITH DRAWBAR, 2 VERTICAL ROLLERS			
ITEM NO.	DESCRIPTION	PART NO.	QTY.
100	H40R-38V-142/071	88201	1
200	Hawse group	65183	1
300	Mount group, Caterpillar, with draw-bar	65218	1
400	Ship loose CAT D3K/D4K/D5K T4F	65185	1
500	Fairlead 2-roller	84636	1

H40R WINCH

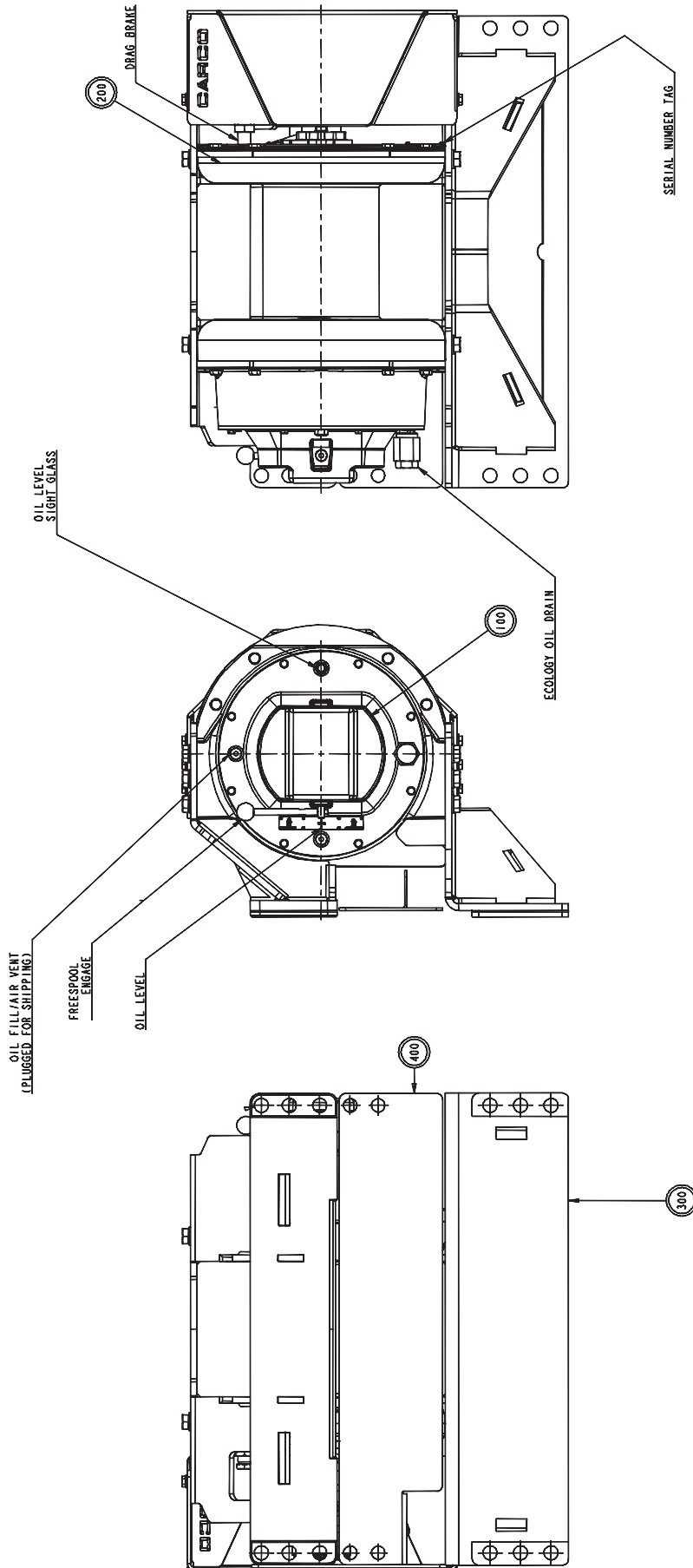
Part number 09209



PART NUMBER 09209 – CAT D3K-D5K WITH DRAWBAR, 4 ROLLERS			
ITEM NO.	DESCRIPTION	PART NO.	QTY.
100	H40R-38V-142/071	88201	1
200	Hawse group	65183	1
300	Mount group, Caterpillar, with drawbar	65218	1
400	Ship loose CAT D3K/D4K/D5K T4F	65185	1
500	Fairlead 2-roller	84840	1
600	Additional roller assembly	84648	2

H40R WINCH

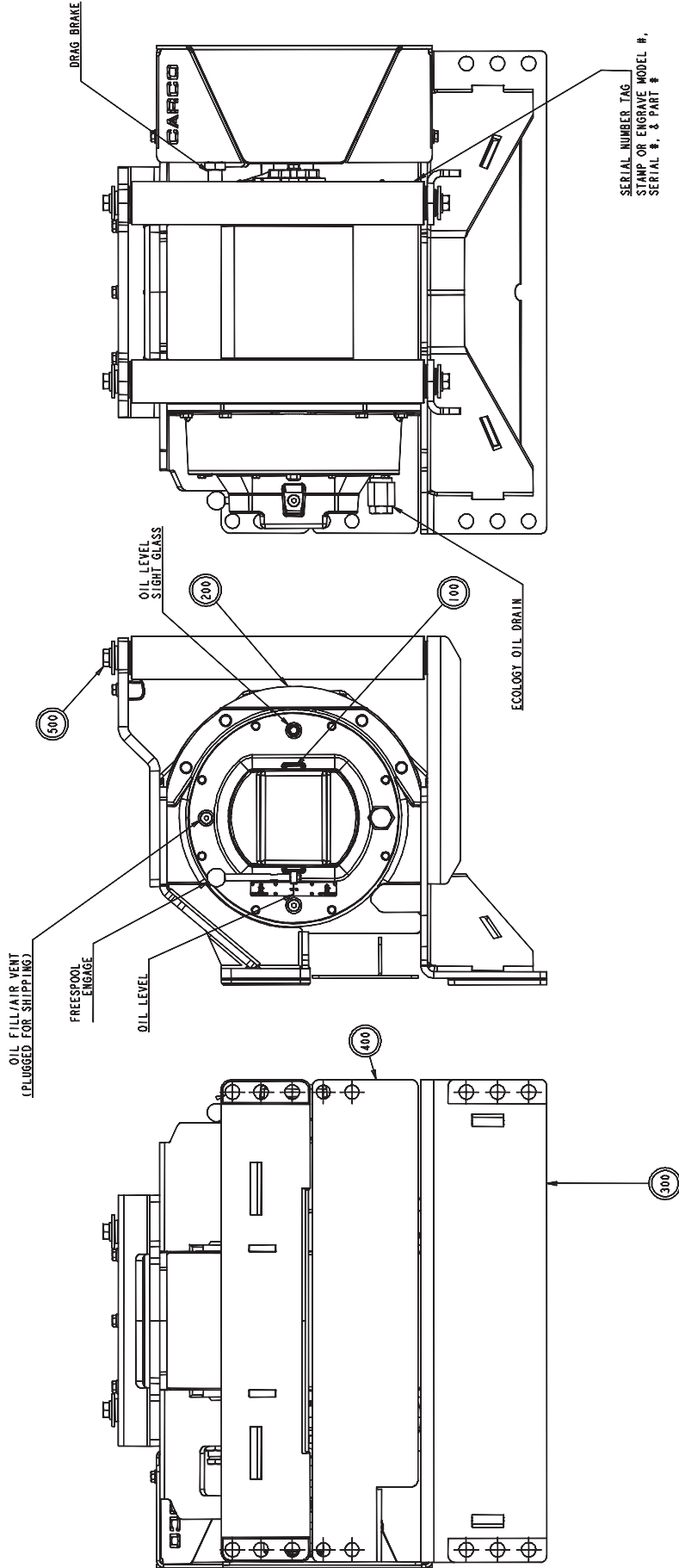
Part number 09151



PART NUMBER 09151 – CAT D3K-D5K NO DRAWBAR, NO ROLLERS			
ITEM NO.	DESCRIPTION	PART NO.	QTY.
100	H40R-38V-142/071	88201	1
200	Hawse group	65183	1
300	Mount group, Caterpillar, no draw-bar	65177	1
400	Ship loose CAT D3K-D5K	65542	1

H40R WINCH

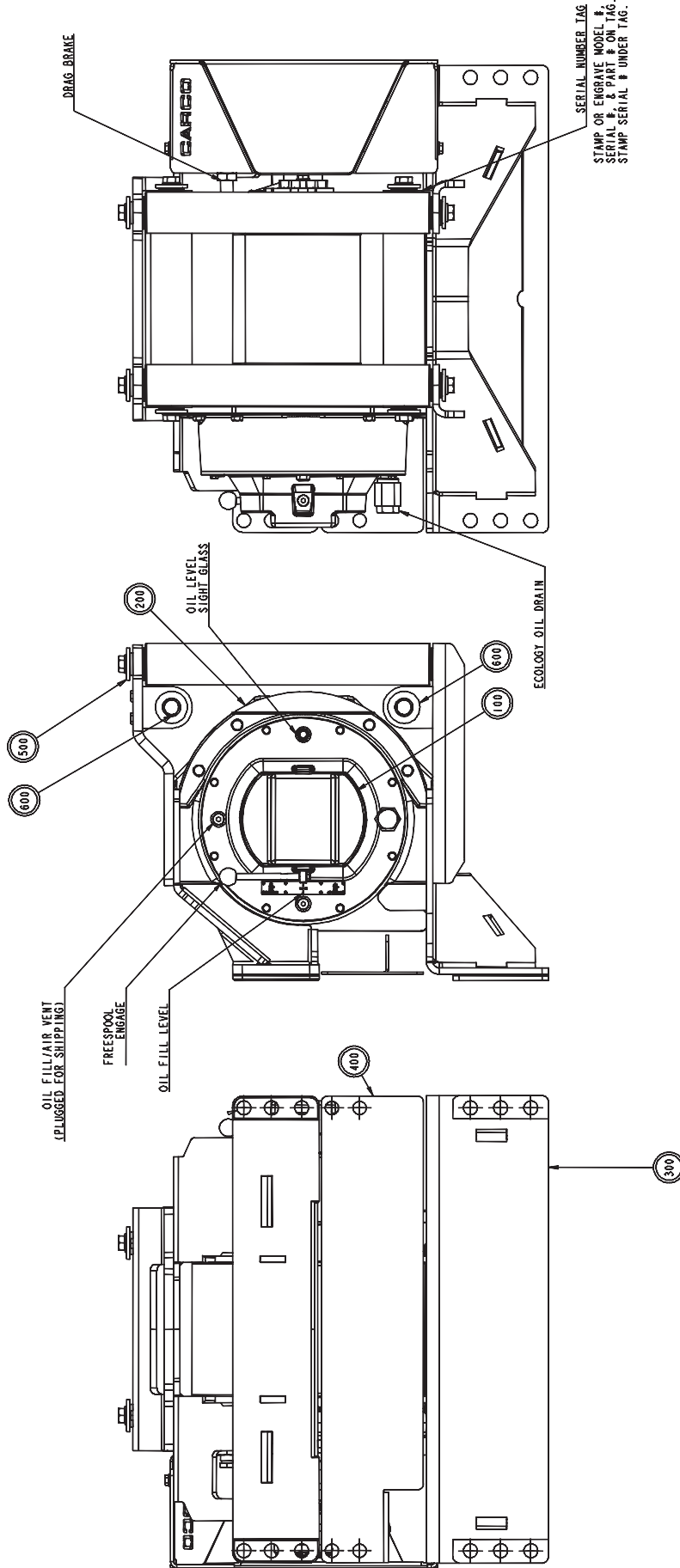
Part number 09210



PART NUMBER 09210 – CAT D3K-D5K NO DRAWBAR – 2 VERTICAL ROLLERS			
ITEM NO.	DESCRIPTION	PART NO.	QTY.
100	H40R-38V-142/071	88201	1
200	Hawse group	65183	1
300	Mount group, Caterpillar, no draw-bar	65177	1
400	Ship loose CAT D3K-D5K	65542	1
500	Fairlead 2-roller	84636	1

H40R WINCH

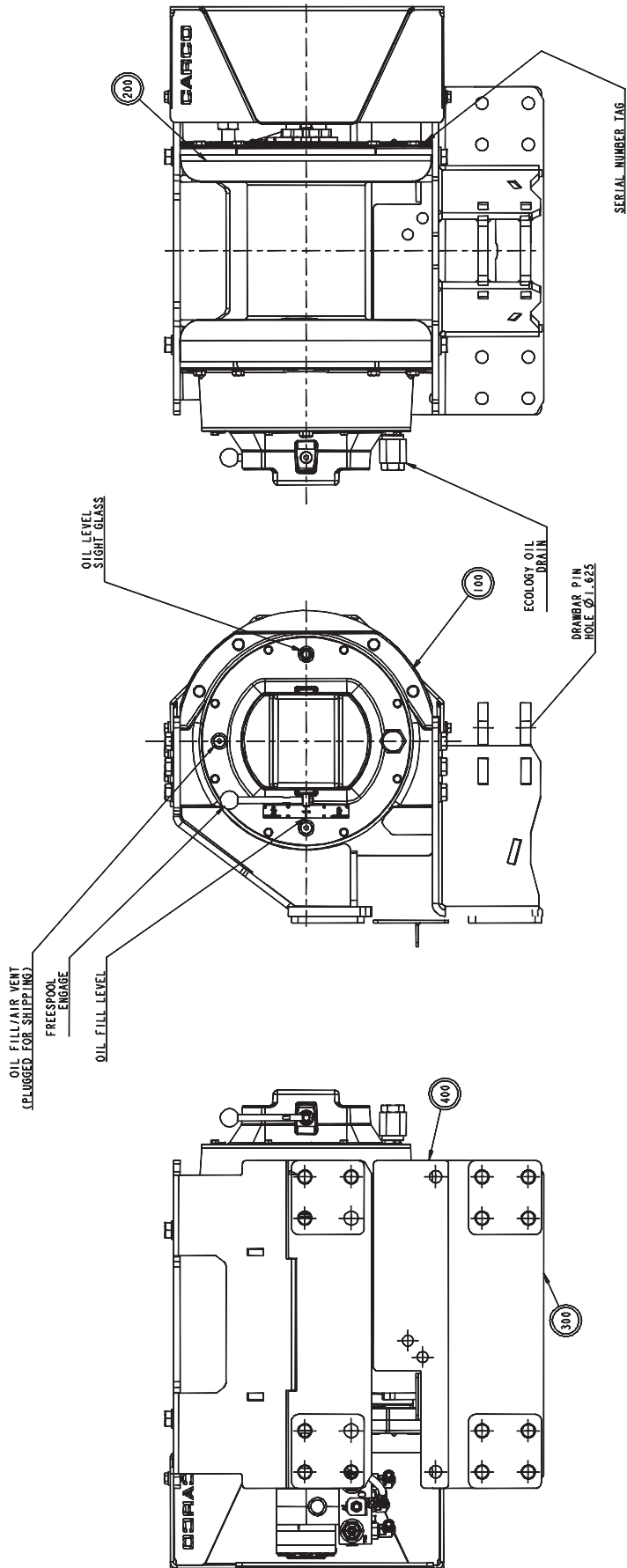
Part number 09211



PART NUMBER 09211 – CAT D3K-D5K NO DRAWBAR – 4 ROLLERS			
ITEM NO.	DESCRIPTION	PART NO.	QTY.
100	H40R-38V-142/071	88201	1
200	Hawse group	65183	1
300	Mount group, Caterpillar, no draw-bar	65177	1
400	Ship loose CAT D3K-D5K	65542	1
500	Fairlead 2-roller	84840	1
600	Additional roller assembly	84648	2

H40R WINCH

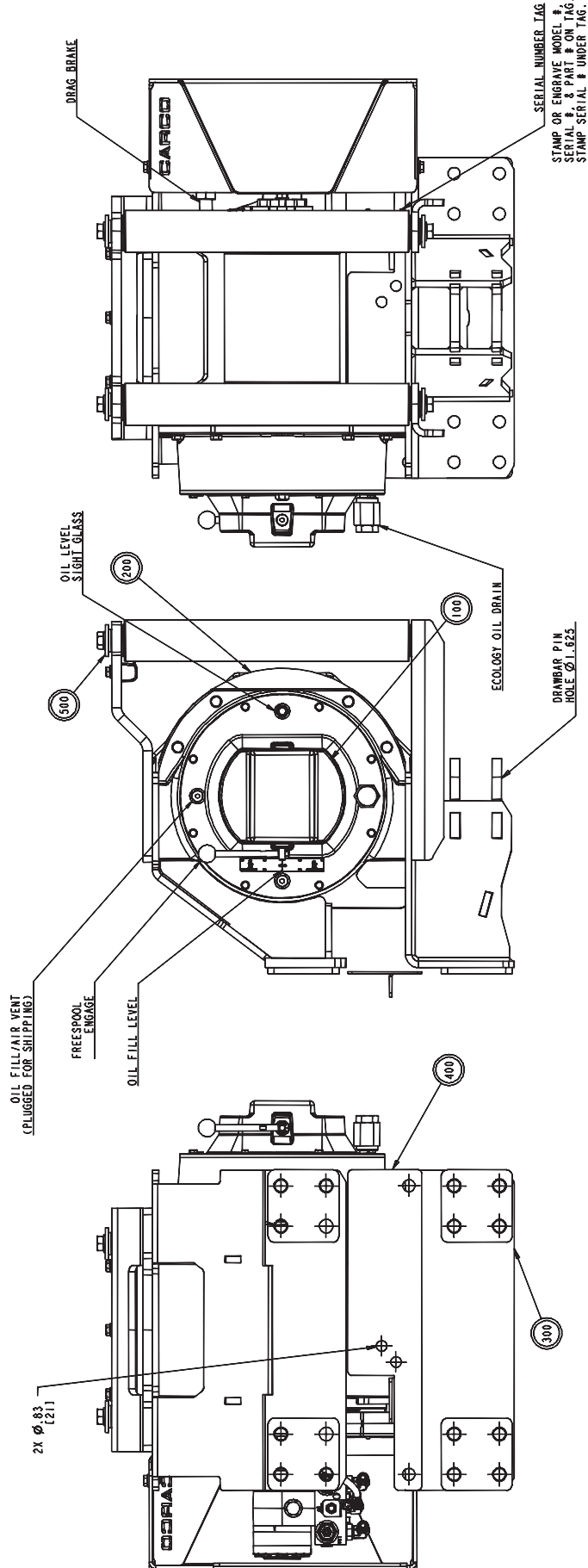
Part number 09167



PART NUMBER 09167 -- JOHN DEERE 450K-650K WITH DRAWBAR -- NO ROLLERS			
ITEM NO.	DESCRIPTION	PART NO.	QTY.
100	H40R-38V-142/071	88201	1
200	Hawse group	65183	1
300	Mount group, John Deere, with drawbar	65219	1
400	Ship loose, John Deere	65306	1

H40R WINCH

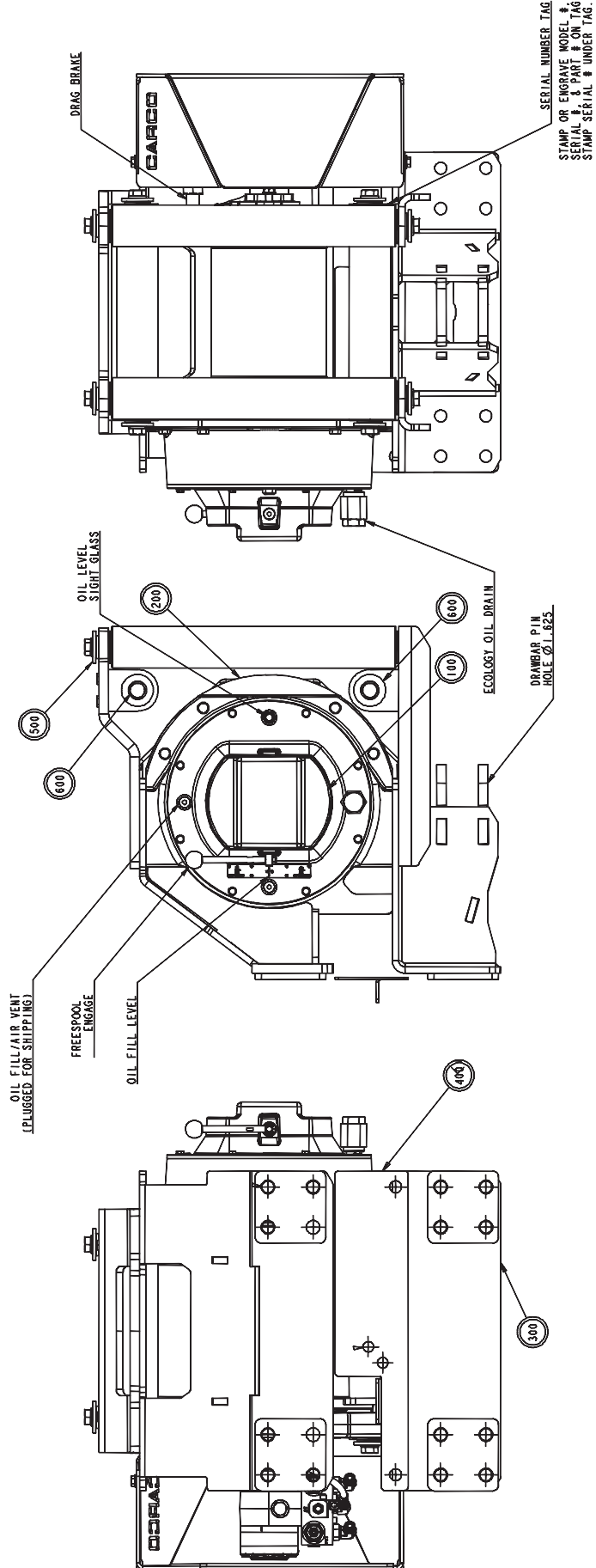
Part number 09212



PART NUMBER 09212 - JOHN DEERE 450K-650K WITH DRAWBAR, 2 VERTICAL ROLLERS			
ITEM NO.	DESCRIPTION	PART NO.	QTY.
100	H40R-38V-142/071	88201	1
200	Hawse group	65183	1
300	Mount group, John Deere, with drawbar	65219	1
400	Ship loose, John Deere	65306	1
500	Fairlead 2-roller	84636	1

H40R WINCH

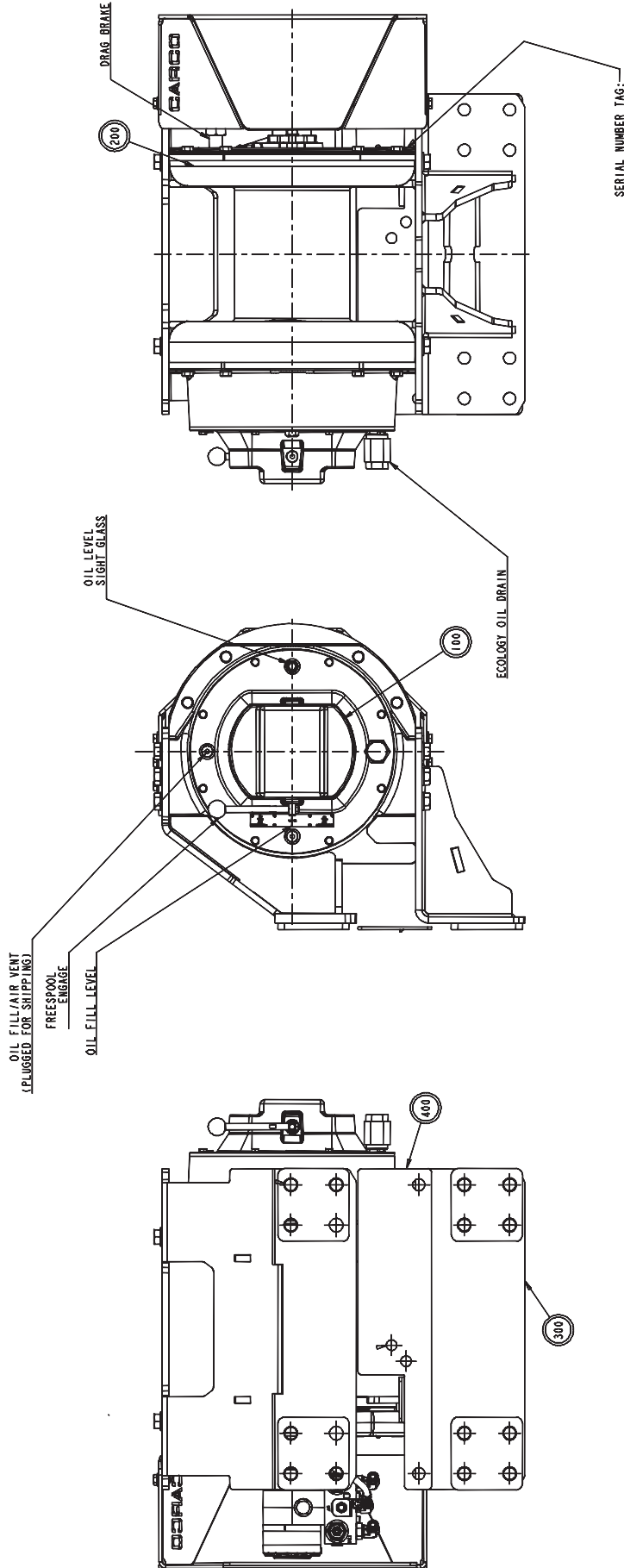
Part number 09213



PART NUMBER 09213 – JOHN DEERE 450K-650K WITH DRAWBAR, 4 ROLLERS			
ITEM NO.	DESCRIPTION	PART NO.	QTY.
100	H40R-38V-142/071	88201	1
200	Hawse group	65183	1
300	Mount group, John Deere, with drawbar	65219	1
400	Ship loose, John Deere	65306	1
500	Fairlead 2-roller	84840	1
600	Additional roller assembly	84648	1

H40R WINCH

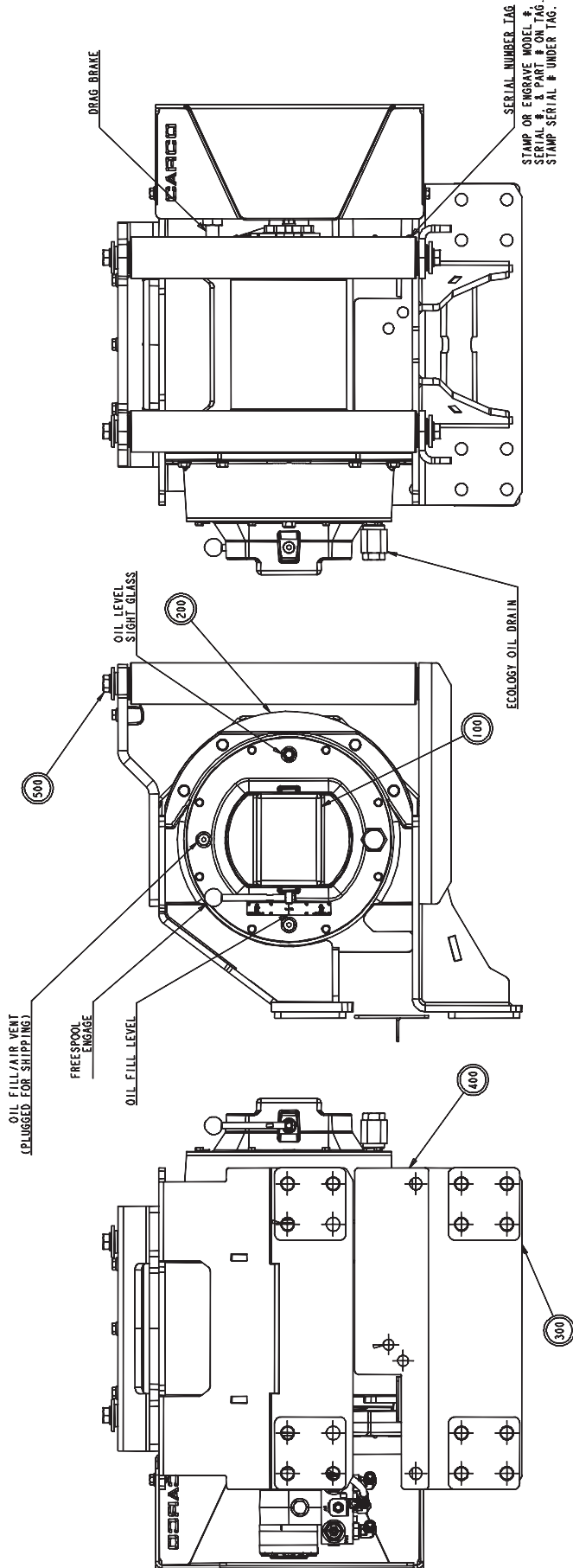
Part number 09166



PART NUMBER 09166 – JOHN DEERE 450K-650K NO DRAWBAR, NO ROLLERS			
ITEM NO.	DESCRIPTION	PART NO.	QTY.
100	H40R-38V-142/071	88201	1
200	Hawse group	65183	1
300	Mount group, John Deere, no draw-bar	65197	1
400	Ship loose, John Deere	65541	1

H40R WINCH

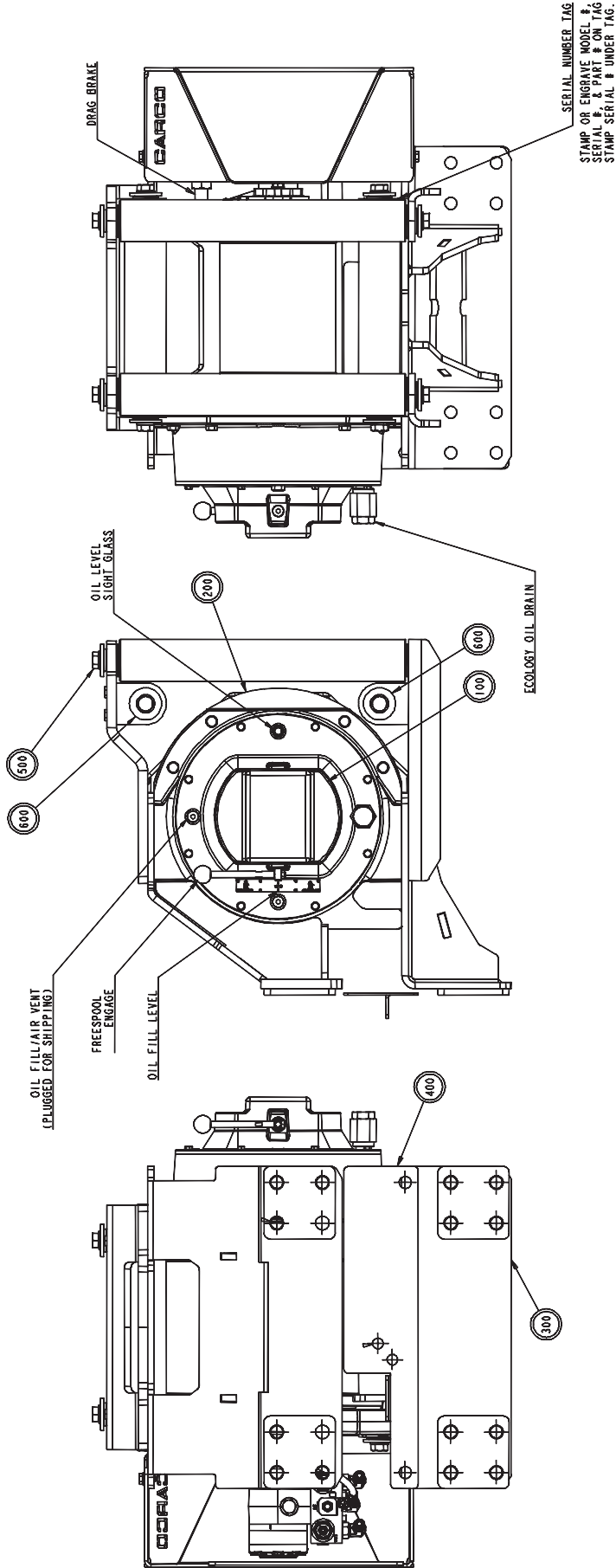
Part number 09214



PART NUMBER 09214 – JOHN DEERE 450K-650K NO DRAWBAR – 2 VERTICAL ROLLERS			
ITEM NO.	DESCRIPTION	PART NO.	QTY.
100	H40R-38V-142/071	88201	1
200	Hawse group	65183	1
300	Mount group, John Deere, no drawbar	65197	1
400	Ship loose, John Deere	65541	1
500	Fairlead 2-roller	84636	1

H40R WINCH

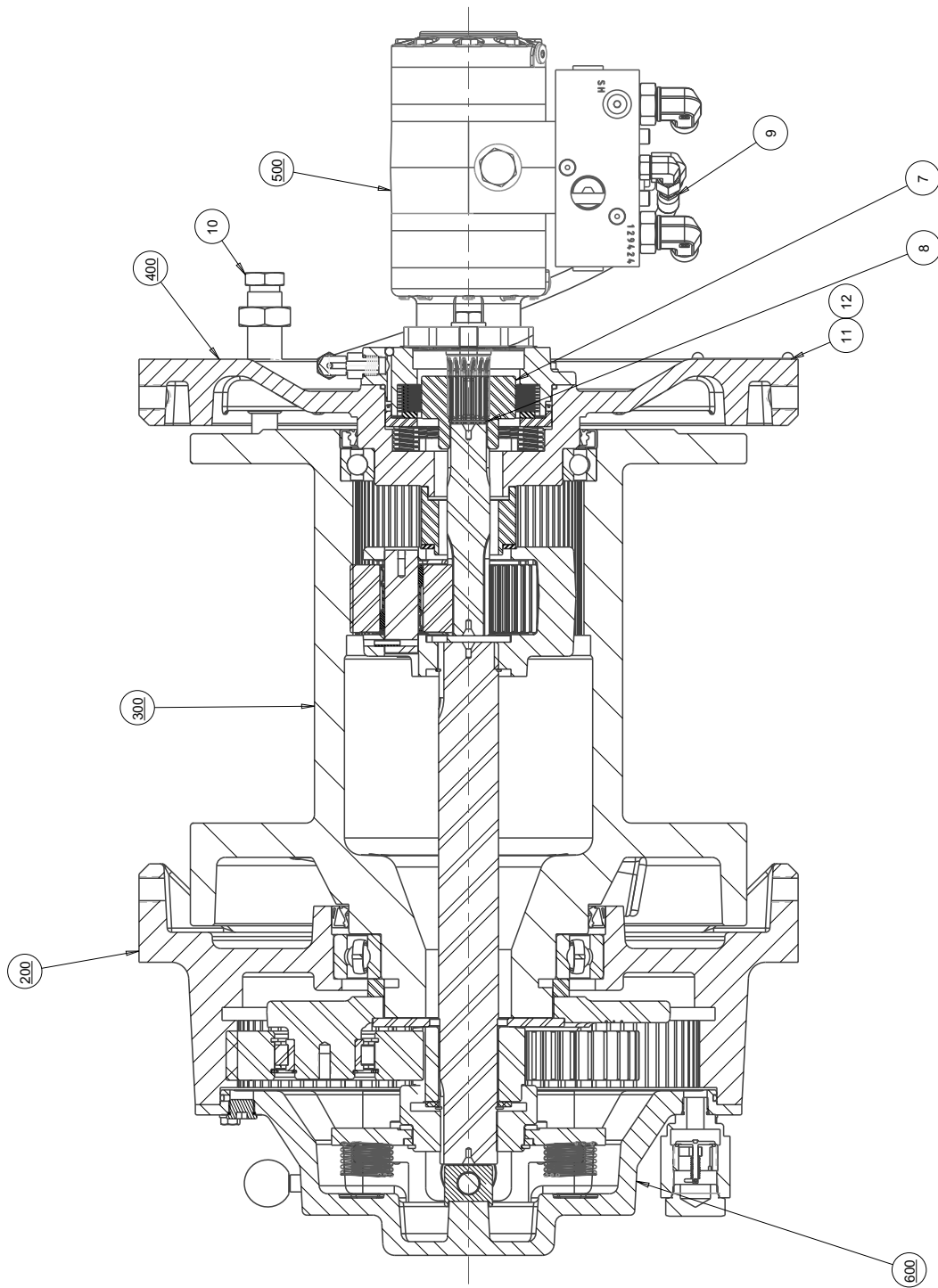
Part number 09215



PART NUMBER 09215 – JOHN DEERE 450K-650K NO DRAWBAR – 4 ROLLERS			
ITEM NO.	DESCRIPTION	PART NO.	QTY.
100	H40R-38V-142/071	88201	1
200	Hawse group	65183	1
300	Mount group, John Deere, no draw- bar	65197	1
400	Ship loose, John Deere	65541	1
500	Fairlead 2-roller	84840	1
600	Additional roller assembly	84648	2

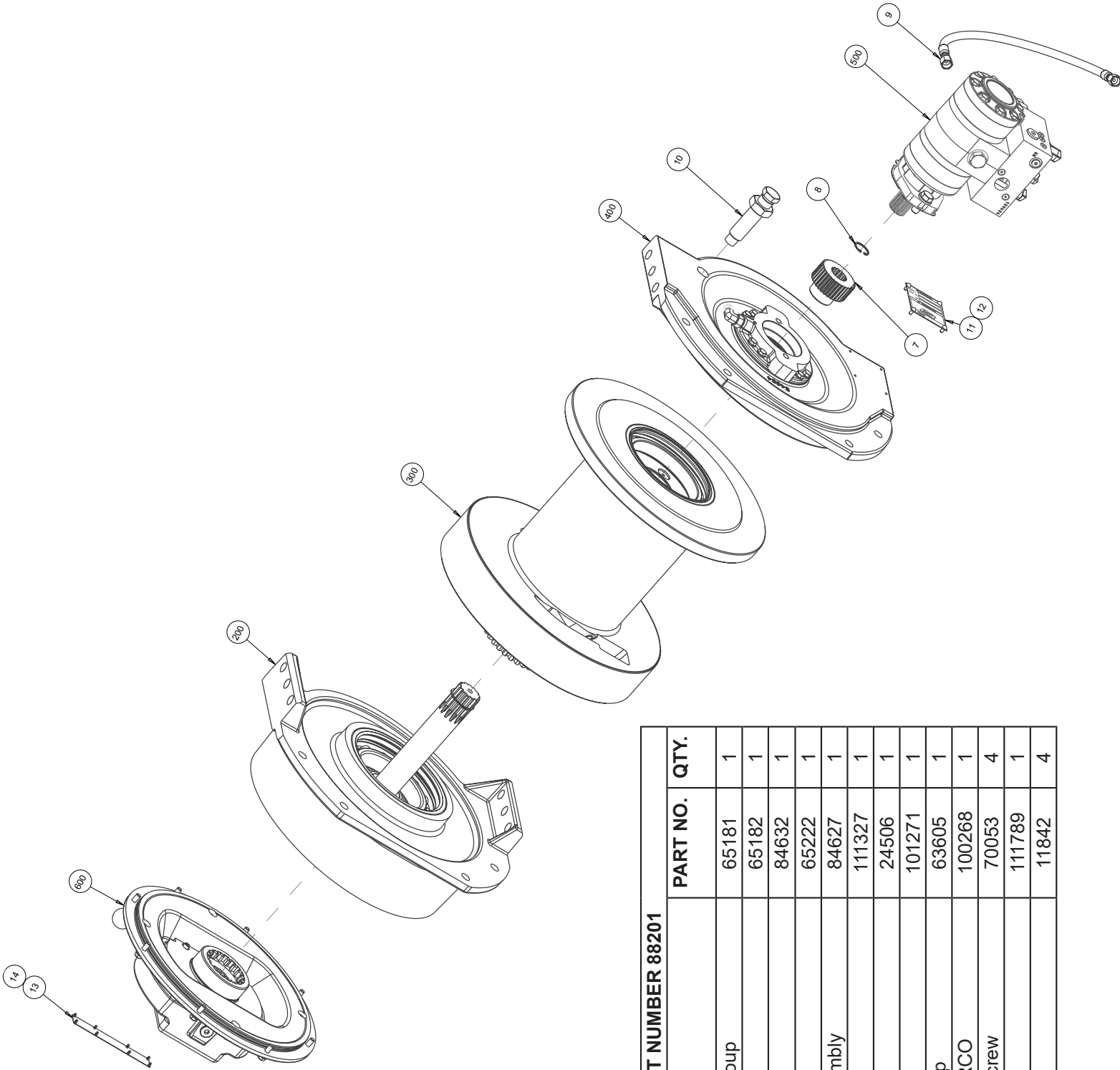
BASE WINCH (100) CROSS-SECTION VIEW

Part number 88201



BASE WINCH (100) EXPLODED VIEW

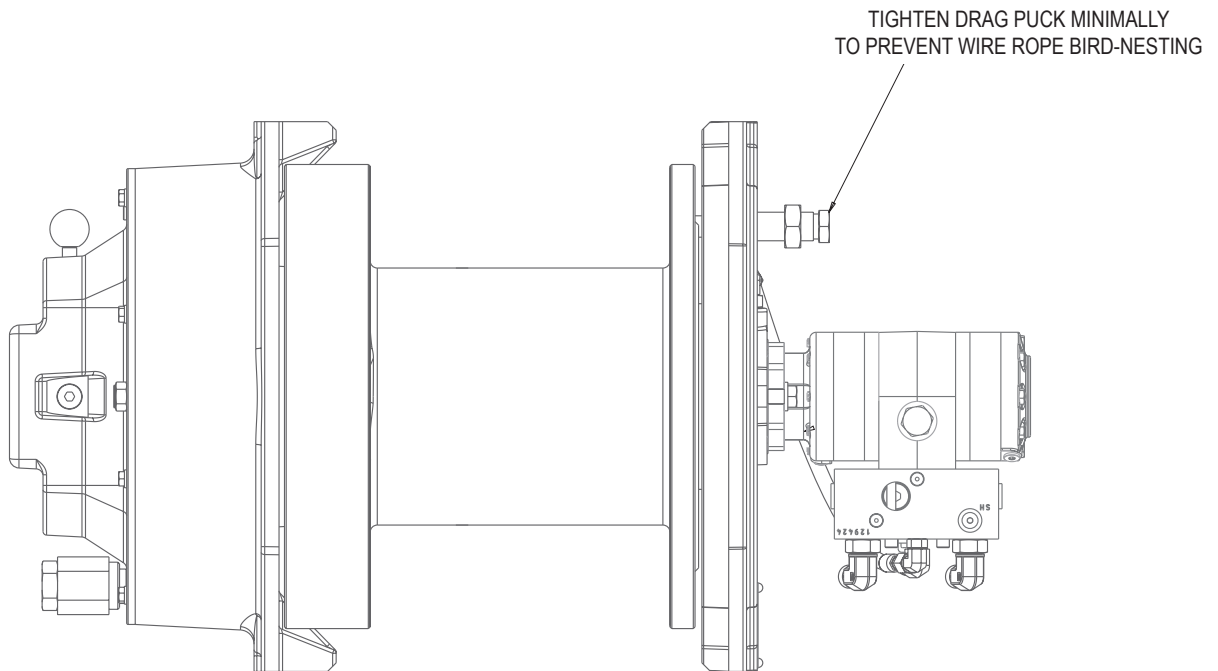
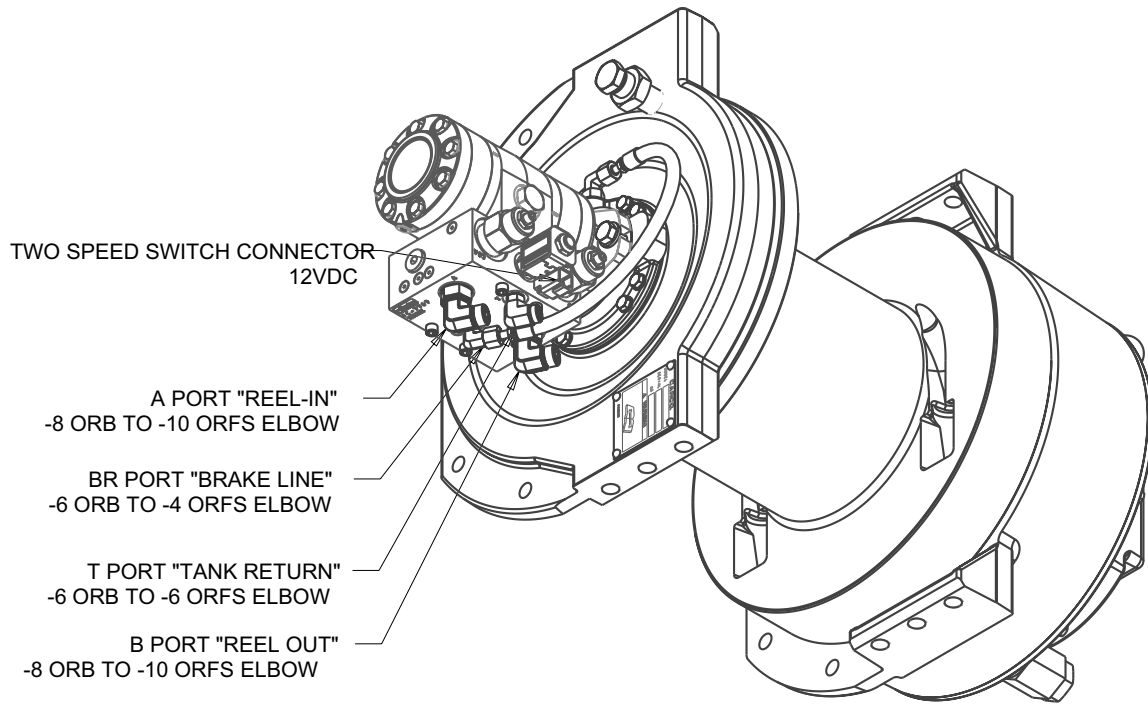
Part number 88201



PART NUMBER 88201			
ITEM NO.	DESCRIPTION	PART NO.	QTY.
200	Gear housing group	65181	1
300	Drum group	65182	1
400	Brake assembly	84632	1
500	Motor group	65222	1
600	Free-spool assembly	84627	1
007	Brake coupling	111327	1
008	Retaining ring	24506	1
009	Hose assembly	101271	1
010	Drag brake group	63605	1
011	Nameplate, CARCO	100268	1
012	16055-5 Drive screw	70053	4
013	Clutch tag	111789	1
014	Drive screw	11842	4

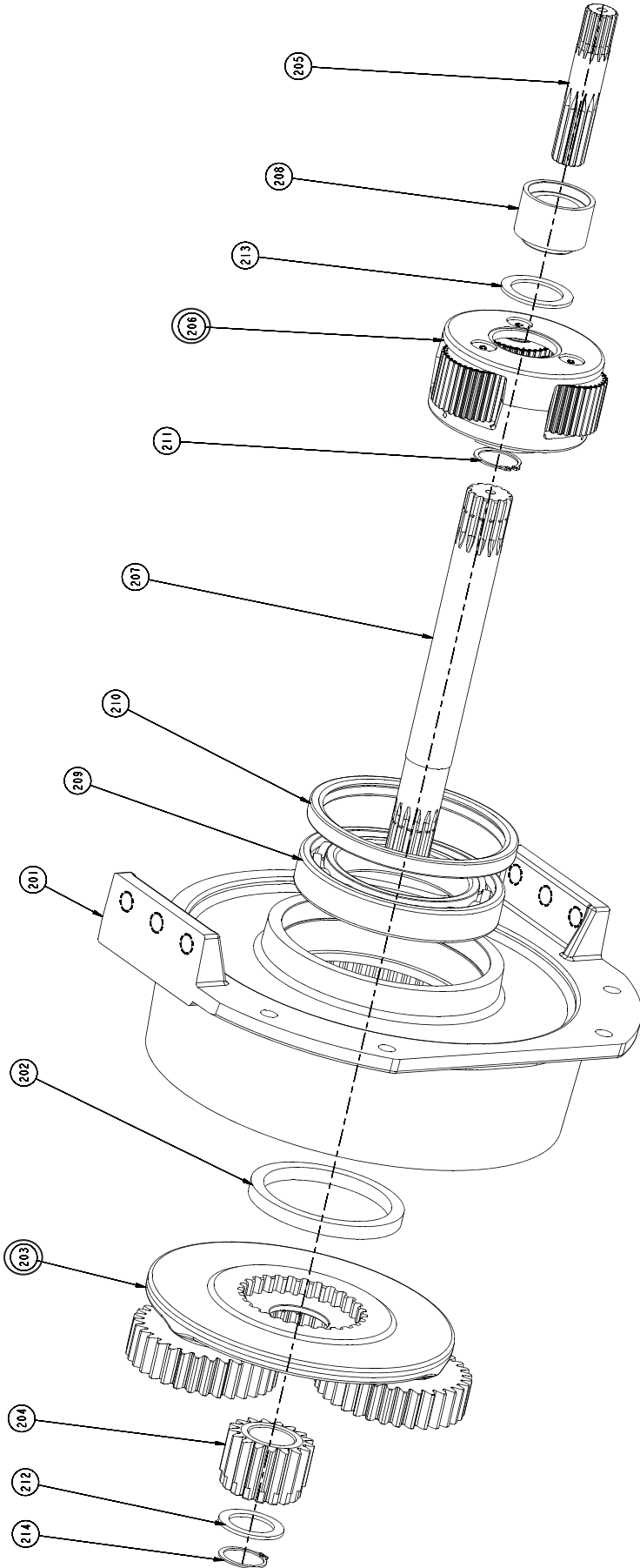
BASE WINCH (100) OVERVIEW

Part number 88201



GEAR HOUSING GROUP (200) EXPLODED VIEW

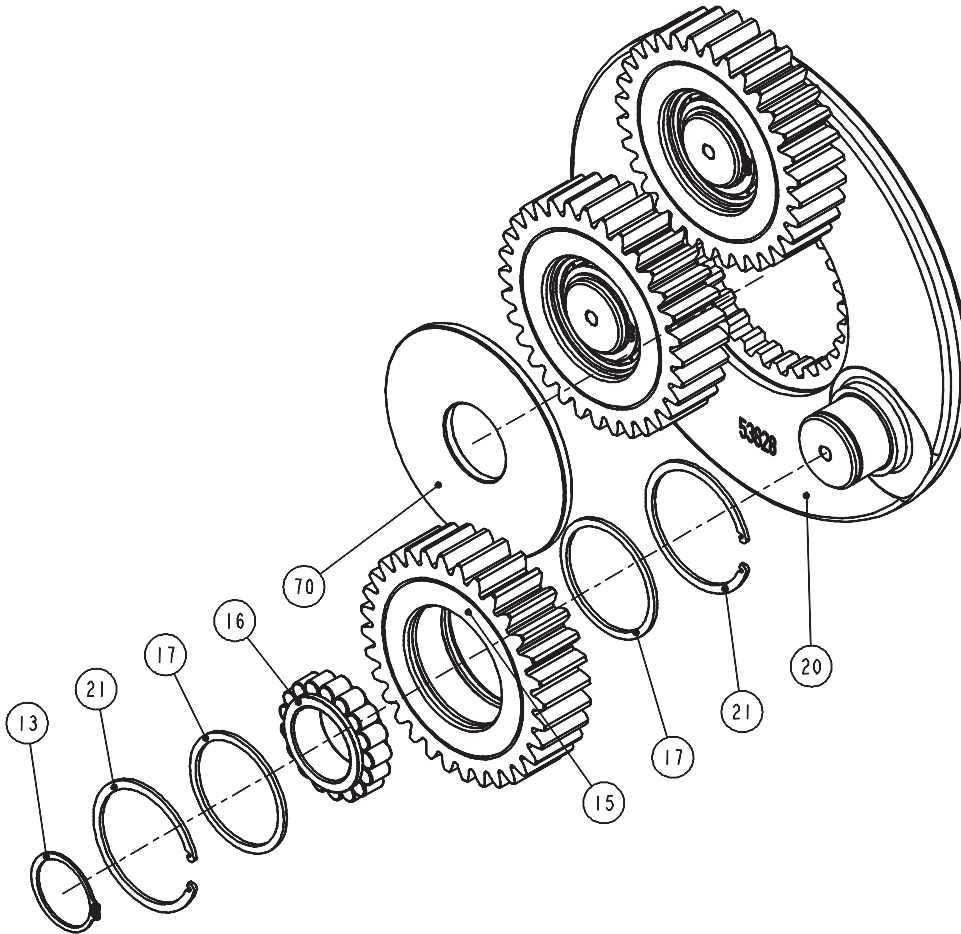
Part number 65181



ITEM NO.	DESCRIPTION	PART NO.	QTY.
201	Gear housing	111281	1
202	Spacer	104768	1
203	Planet carrier assembly	83080	1
204	Gear, sun	102323	1
205	Input sun gear	111275	1
206	Planet carrier assembly	81829	1
207	Shaft	111276	1
208	Spacer	111277	1
209	Ball bearing	24487	1
210	Seal	10427	1
211	21-B3-1 Snap ring	12034	1
212	Thrust race	111463	1
213	Thrust race	25590	1
214	51016 Snap ring	72386	1

PLANET CARRIER ASSEMBLY (203)

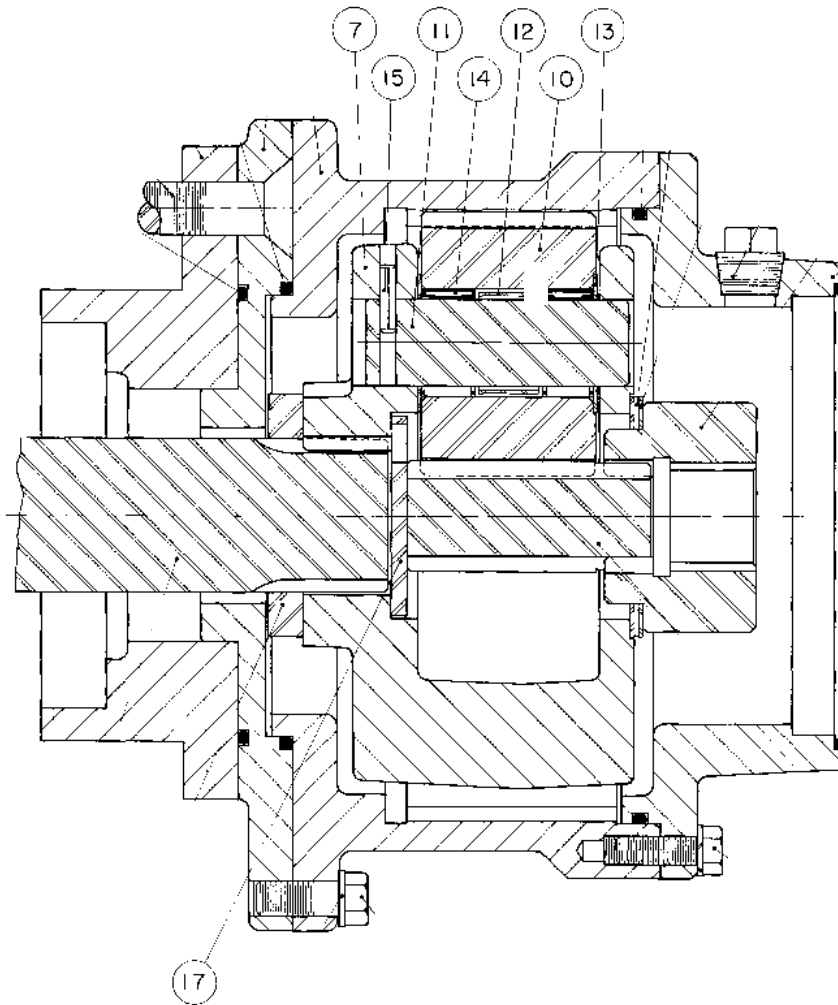
Part number 83080



ITEM NO.	DESCRIPTION	PART NO.	QTY.
13	21-B3-1 Snap ring	12034	3
15	Gear, planet	102376	3
16	Bearing, cylindrical roller	102288	3
17	Thrust spacer	102296	6
20	Carrier, planet	102739	1
21	Retaining ring, internal	102330	6
70	Spacer, thrust	102339	1

PLANET CARRIER ASSEMBLY (206)

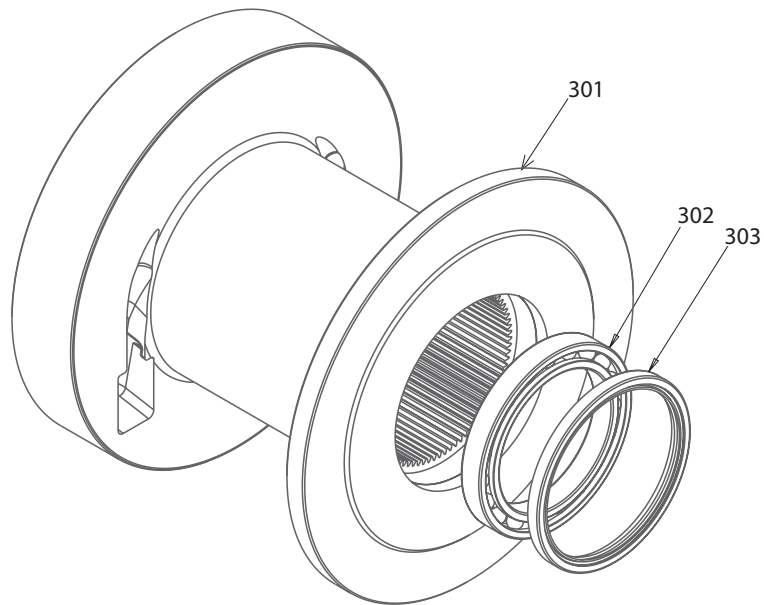
Part number 81829



ITEM NO.	DESCRIPTION	PART NO.	QTY.
7	Output planet carrier	25309	1
10	Planet gear	26272	3
11	Secondary planet gear shaft	24898	3
12	Bearing spacer	24890	3
13	Thrust bearing	24167	6
14	Roller bearing	24175	6
15	Roll pin	21049	3
17	Thrust washer	25542	1

DRUM GROUP (300) EXPLODED VIEW

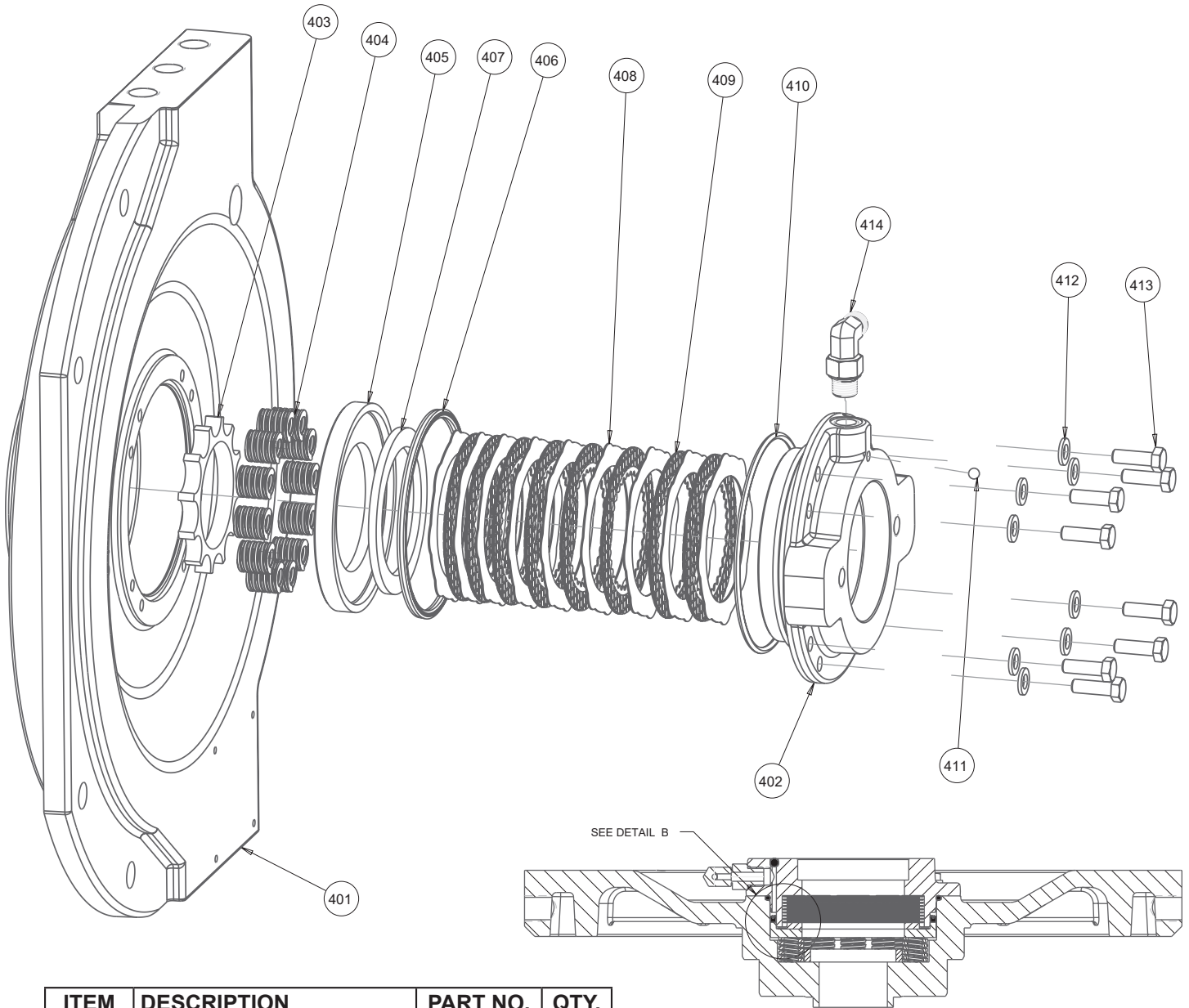
Part number 65182



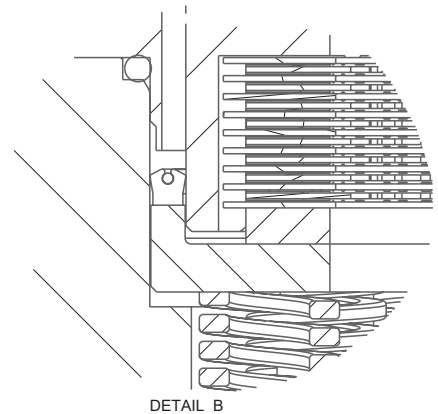
ITEM NO.	DESCRIPTION	PART NO.	QTY.
301	Drum	111278	1
302	Bearing	107544	1
303	Seal, oil	22818	1

BRAKE ASSEMBLY (400) EXPLODED VIEW

Part number 84632

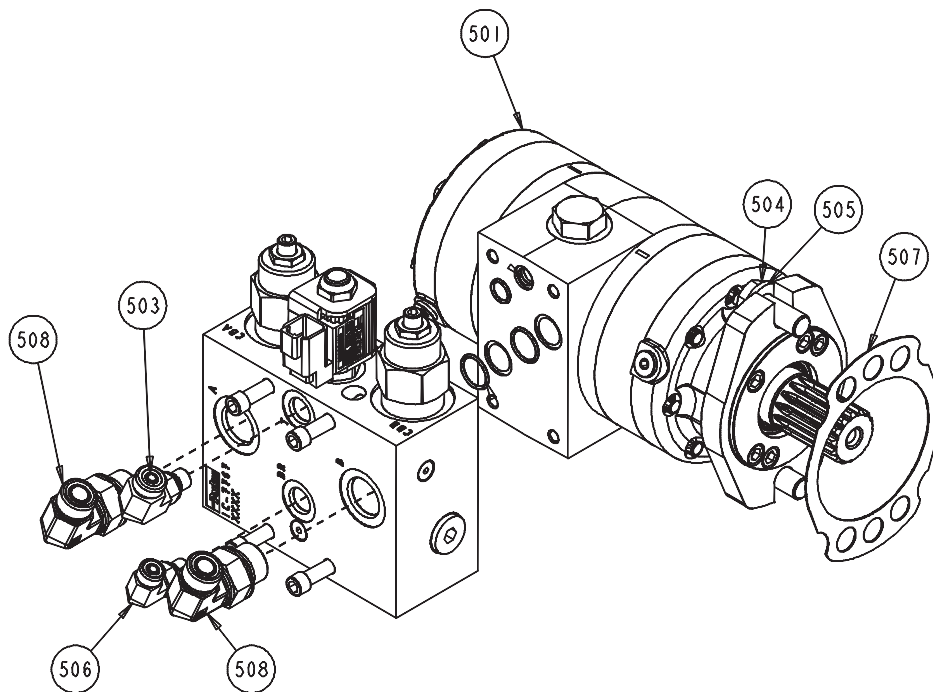
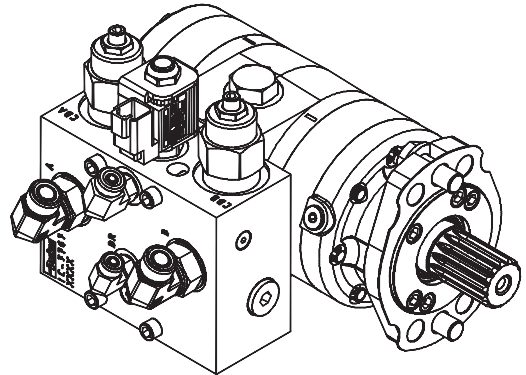
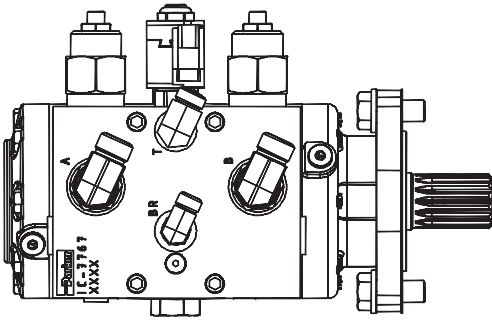


ITEM NO.	DESCRIPTION	PART NO.	QTY.
401	Motor end bearing	111279	1
402	Motor adapter	111280	1
403	Spring locator	100136	1
404	Spring	26094	12
405	Spring plate	25552	1
406	U-cup seal	25594	1
407	Brake plate spacer	25550	1
408	Brake disc	102314	9
409	Friction disc	25541	8
410	O-ring	70138	1
411	Ball, steel	70126	1
412	Washer	100858	8
413	Cap screw	11767	8
414	Elbow, 90 -6ORB, -4ORFS	26680	1



MOTOR GROUP (500) EXPLODED VIEW

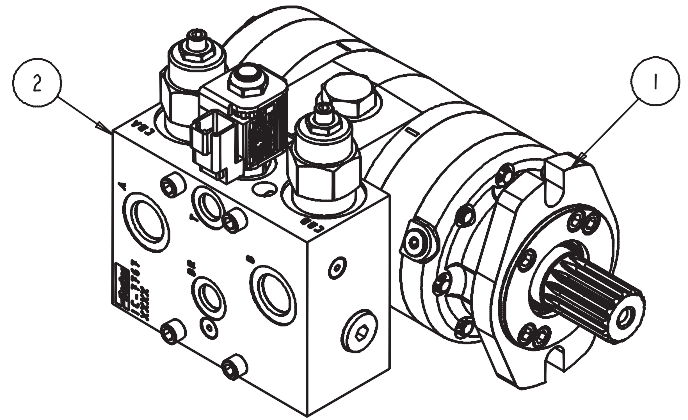
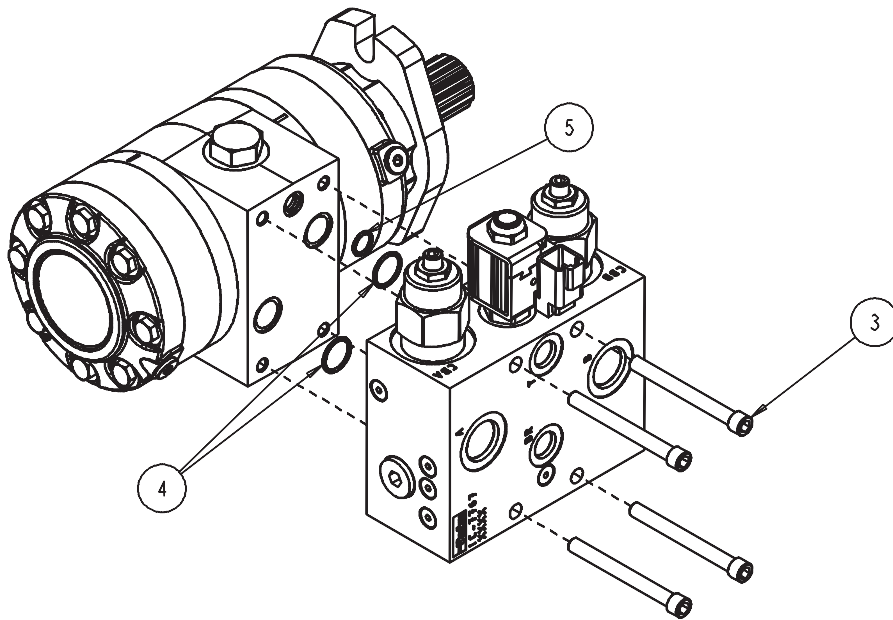
Part number 65222



ITEM NO.	DESCRIPTION	PART NO.	QTY.
501	Hydraulic motor assembly	111633	1
503	Elbow, 90 ORS STR THD	40107	1
504	Cap screw	104174	2
505	Washer	100859	2
506	Elbow, 90 degrees, -6ORB, -4ORFS	26680	1
507	Gasket, motor	22813	1
508	Elbow, -10ORB/-8ORFS	103739	2
509	Cap	101581	1
510	Cap	101274	2

HYDRAULIC MOTOR ASSEMBLY (501) EXPLODED VIEW

Part number 111633



ITEM NO.	DESCRIPTION	PART NO.	QTY.
1	Hydraulic motor	111711	1
2	Control valve	84713	1
3	Cap screw	29631	4
4	O-ring	22453	2
5	O-ring	72094	1

CONTROL VALVE

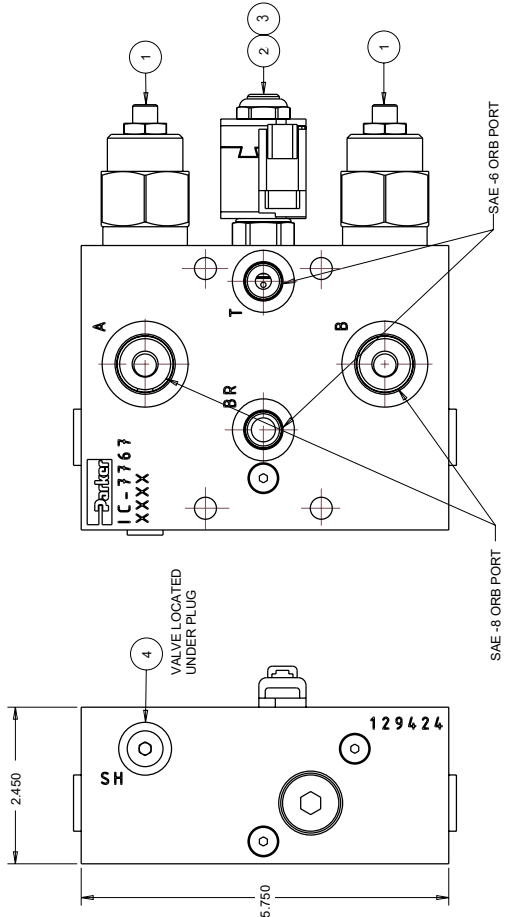
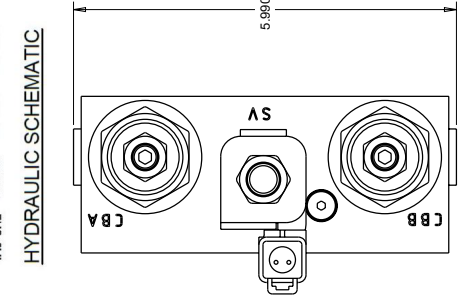
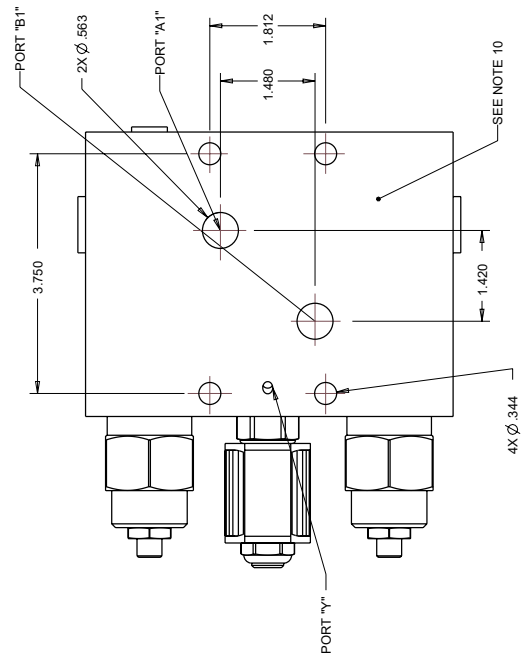
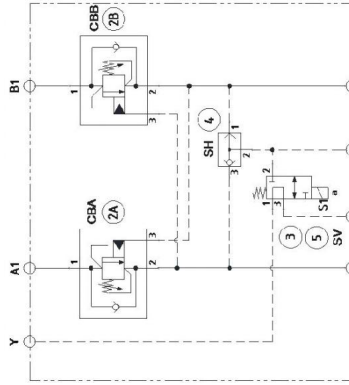
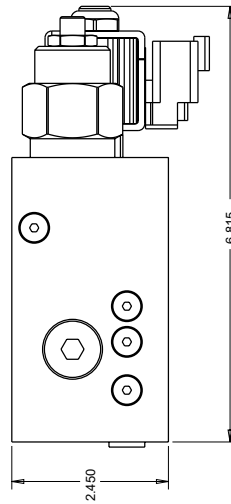
Part number 84713

SERVICE BILL OF MATERIAL

ITEM NO.	PART NO.	QTY.	DESCRIPTION	INSTALLATION TORQUE
1	112745	2	Load control valve 5:1	63 lb-ft (85 Nm)
2	112746	1	Solenoid valve 8 series 3W2P N spool	23-27 lb-ft
3	112747	1	Coil/ 0.500/ SH1/ IDT/ 012VDC	5-7 lb-ft
Optional	112749		Coil/ 0.500/ SH1 IDT/ 024VDC	5-7 lb-ft
4	112748	1	Shuttle valve	6-8 lb-ft

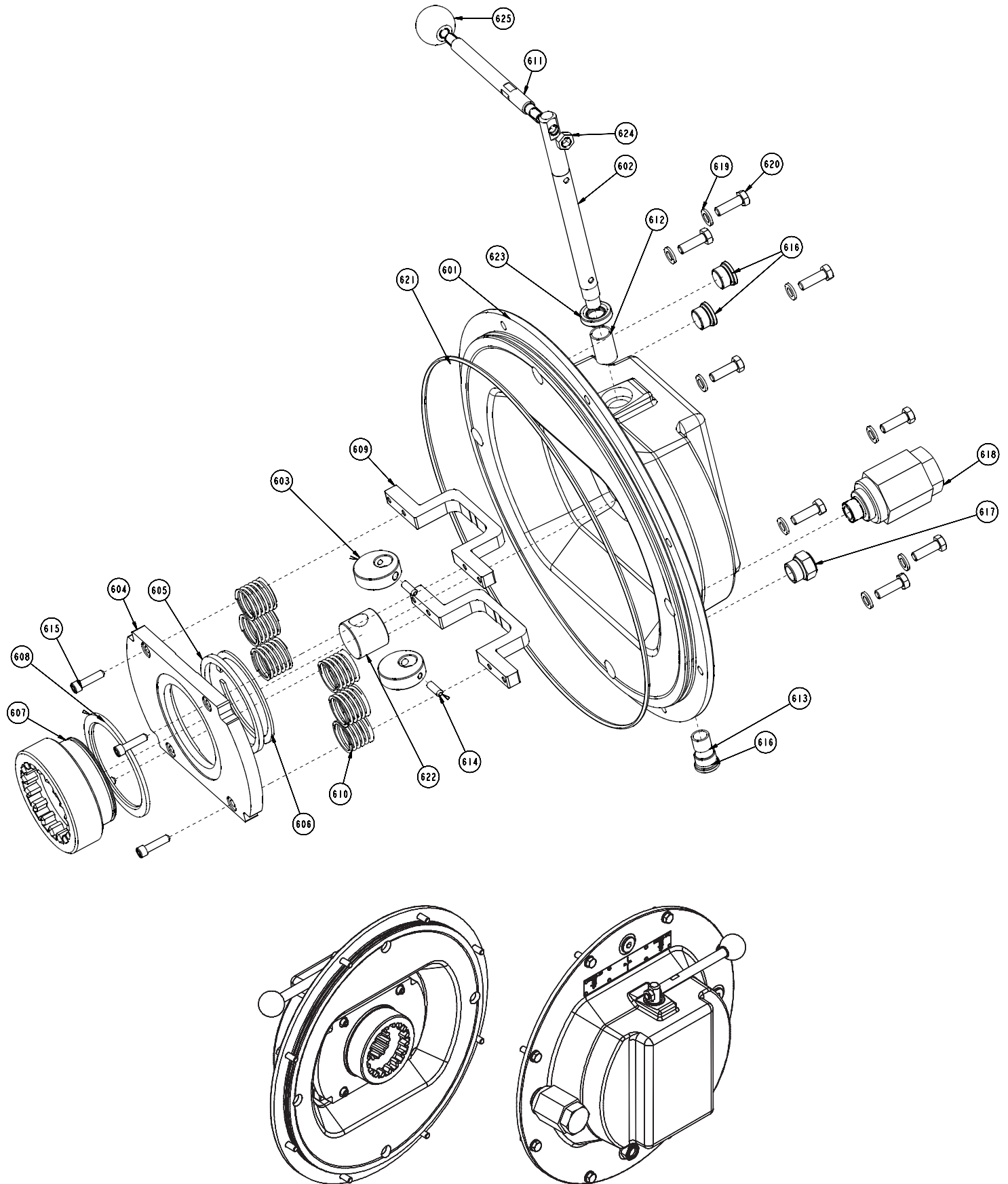
NOTES:

- All dimensions are reference only.
- Rated flow 32 GPM (120 LPM).
- Rated pressure 725–5,000 PSI (50–350 bar).
- Sensitivity: Pressure/turn 640 PSI (44 bar).
- Cartridge material all parts steel.
- All operating parts hardened steel.
- Operating temperature range of seals:
 - Nitrile -30°F to +250°F (-34°C to +121°C)
 - Fluorocarbon -15°F to +400°F (-26°C to +204°C)
- Fluid mineral-based or synthetic with compatibility/lubricating properties at viscosities of 6 to 420 CST (45 to 2,000 SSU).
- Filtration ISO-4406 18/16/13, SAE Class 4.
- This surface must be protected during shipping, handling, and storage.
- Open work ports to be plugged with plastic shipping plugs.
- 12VDC standard, order optional coil 112749 to modify control valve for 24VDC tractor operation.



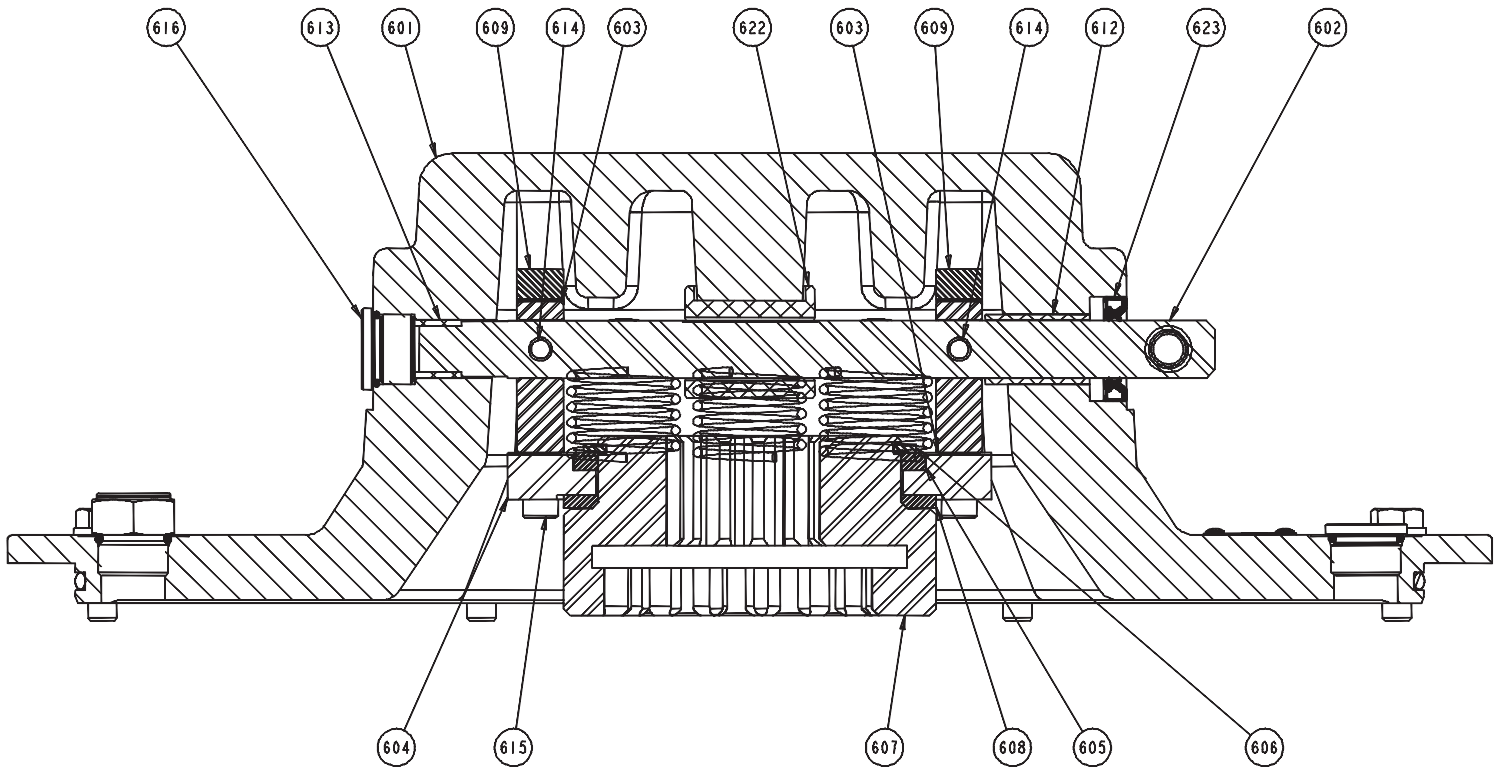
FREE-SPOOL ASSEMBLY (600) EXPLODED VIEW

Part number 84627



FREE-SPOOL ASSEMBLY (600) CROSS-SECTION VIEW

Part number 84627

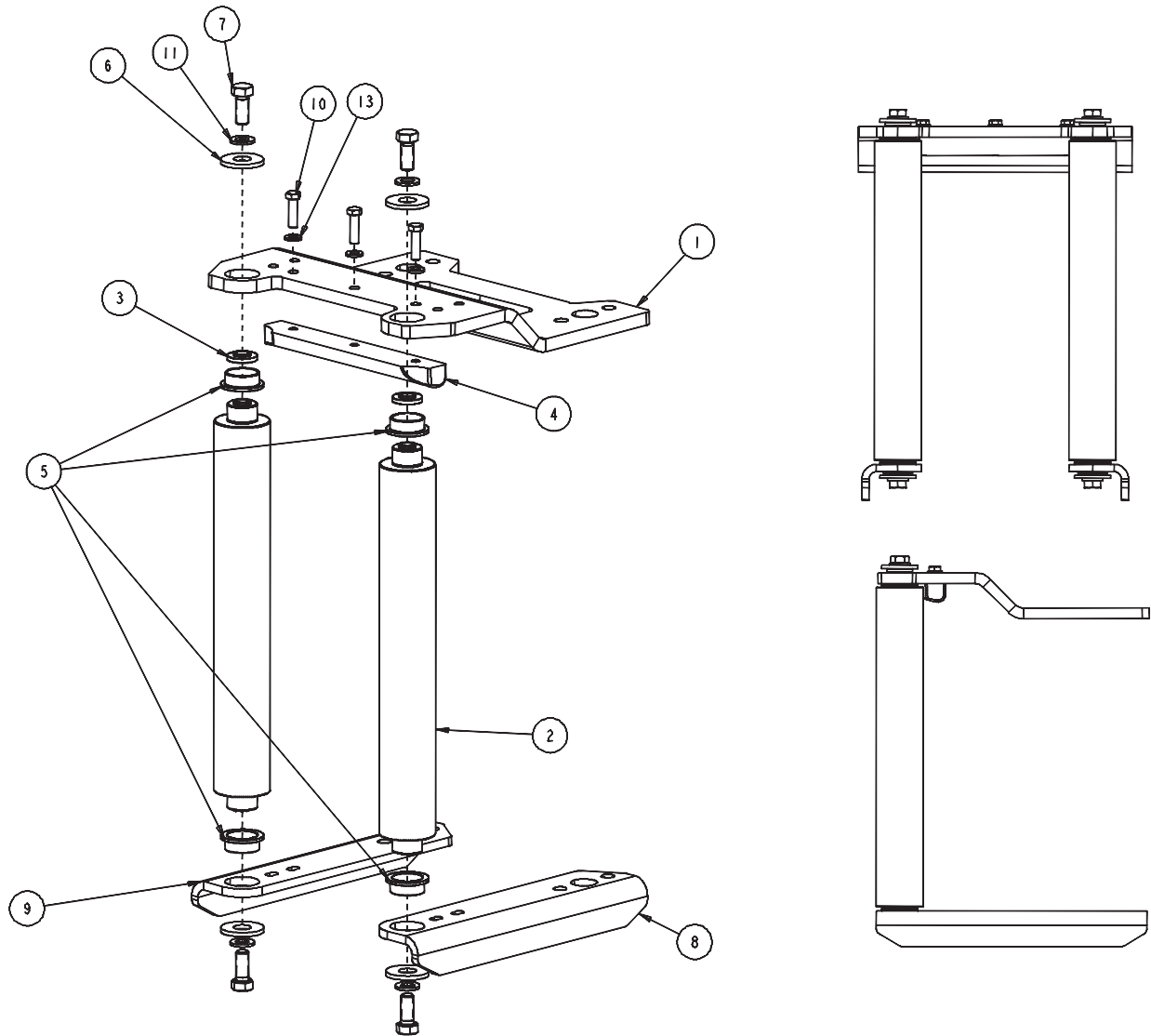


ITEM NO.	DESCRIPTION	PART NO.	QTY.
601	Cover	111221	1
602	Shaft	111222	1
603	Cam	111223	2
604	Spring plate	111224	1
605	Thrust spacer	104740	1
606	Retaining ring	104920	1
607	Free-spool coupling	111225	1
608	Thrust spacer	104739	1
609	Cam bridge	111226	2
610	Spring, BP200	101926	6
611	Handle	111227	1
612	Bushing, .627 X .753 X 1.13	111703	1
613	Bushing, .5005 X .627 X .5	111704	1

ITEM NO.	DESCRIPTION	PART NO.	QTY.
614	Socket setscrew, cup point	21233	2
615	Cap screw	13932	4
616	Plug, O-ring	32411	3
617	Sight gauge	26705	1
618	Drain valve assembly	83320	1
619	Washer	100858	8
620	Cap screw	11767	8
621	O-ring	25016	1
622	Thrust boss	111464	1
623	Oil seal, .63 1.12 .25	111471	1
624	Nut, jam	11050	1
625	Knob, BP200B	101924	1
626	Reducer	26868	1
627	Relief valve 1-5 PSI	10074	1

ROLLER FAIRLEAD OPTION

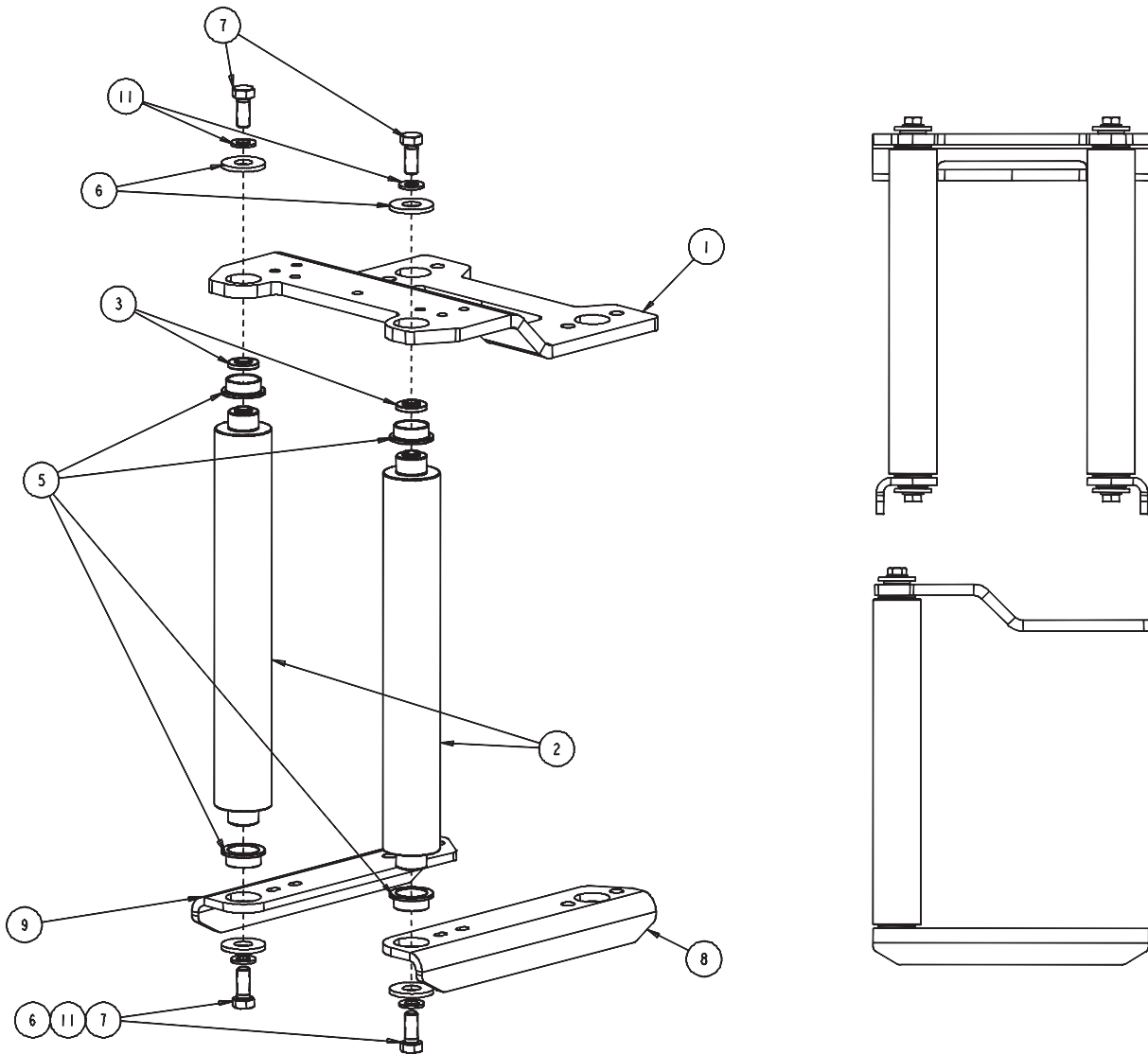
Part number 84636



PART NUMBER 84636			
ITEM NO.	DESCRIPTION	PART NO.	QTY.
1	Fairlead frame, top	111288	1
2	Roller, vertical	111332	2
3	Spacer	111899	2
4	Hawse top	111336	1
5	Bushing, flange 1.765 ID	111898	4
6	Washer, M24 large OD hard Z	108760	4
7	Cap screw	104328	4
8	Fairlead frame, right	111290	1
9	Fairlead frame, left	111289	1
10	Cap screw	104323	3
11	Washer	100856	4
13	Washer	100859	3

FAIRLEAD 2-ROLLER OPTION

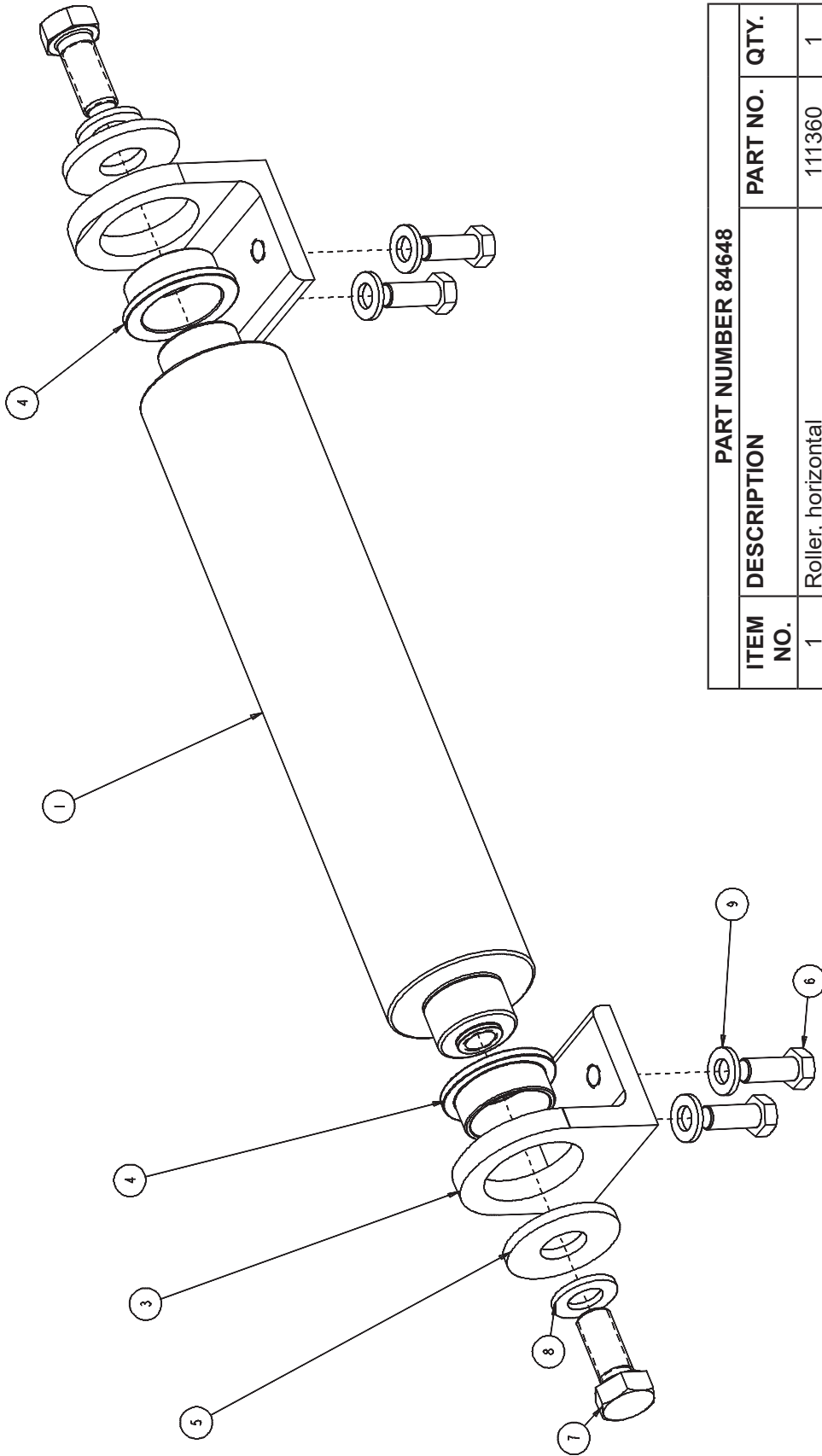
Part number 84840



PART NUMBER 84840			
ITEM NO.	DESCRIPTION	PART NO.	QTY.
1	Fairlead frame, top	111288	1
2	Roller, vertical	111332	2
3	Spacer	111899	2
5	Bushing, flange 1.765 ID	111898	4
6	Washer, M24 large OD hard Z	108760	4
7	Cap screw	104328	4
8	Fairlead frame, right	111290	1
9	Fairlead frame, left	111289	1
11	Washer	100856	4

ROLLER FAIRLEAD OPTION

Part number 84648



PART NUMBER 84648		
ITEM NO.	DESCRIPTION	PART NO. QTY.
1	Roller, horizontal	111360 1
3	Angle bracket	111361 2
4	Bushing, flange 1.765 ID	111898 2
5	Washer, M24 large OD hard Z	108760 2
6	Cap screw	104174 4
7	Cap screw	104328 2
8	Washer	100856 2
9	Washer	100859 4

