

Product: PD12C/PD15B with the 01 and 04 Style Drum
Title: PD12C/PD15B Bearing Support Product Improvement
Purpose: Product Improvement

If drum bearing support, part no. 101645, requires replacement in PD12C and PD15B model hoists with the 01 and 04 style drum, an upgraded bearing support must be purchased. The upgraded bearing support uses Hex Head Capscrews (p/n 11174) and Lockwashers (p/n 12781) to provide easier servicing. The previous designs using Flathead Capscrews (p/n 25096) and Bearing Support (p/n 101645) were sometimes difficult to remove from the hoist when servicing.

SERVICE PRECAUTIONS

- Before any part is removed from the hoist, all service instructions should be read and understood
- Work in a clean, dust free area as cleanliness is of utmost importance when servicing hydraulic equipment
- Inspect all replacement parts, prior to installation, to detect any damage which might have occurred in shipment
- Use only genuine BRADEN replacement parts for optimum results. Never reuse expendable parts such as oil seals and O-rings
- Inspect all machined surfaces for excessive wear or damage ... before reassembly operations are begun
- Lubricate all O-rings and oil seals with gear oil prior to installation
- Use a sealing compound on the outside surface of oil seals
- Thoroughly clean all parts in a good grade of non-flammable safety solvent. Wear protective clothing as required

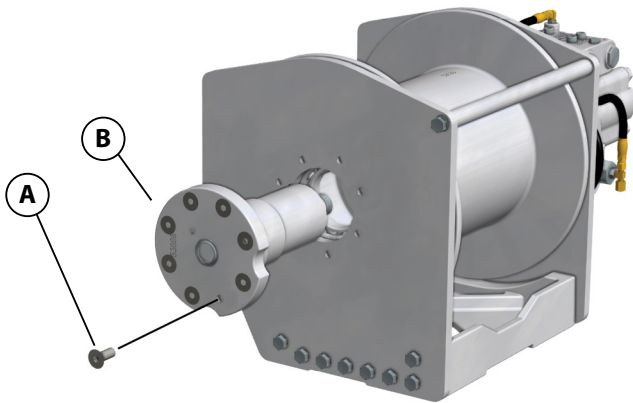
INSTALLATION INSTRUCTIONS

1. Refer to Service Manual LIT2103 for instructions on how to disassemble hoist.
2. Remove or replace Relief Valve (p/n 18062) from existing Bearing support and install on upgraded Bearing Support.
3. Hoists will be equipped with either a Hex Plug (p/n 31386), Flush Plug (p/n 24420), or Sight Glass (p/n 25958). Remove from existing Bearing support and install on upgraded Bearing Support.
4. Reassemble winch per procedure in Service Manual LIT2103.

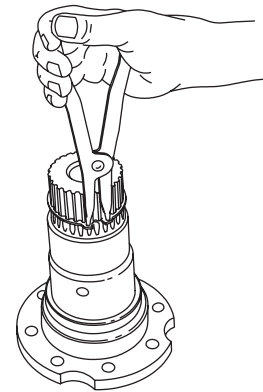
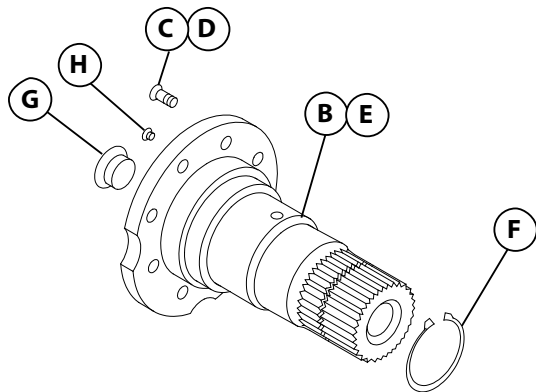
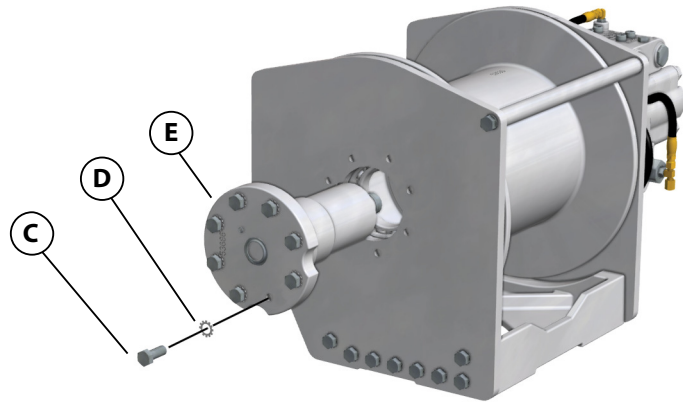
(over)

	DESCRIPTION	PART NO	QTY
A	PREVIOUS FLATHEAD CAPSCREWS	25096	8
B	PREVIOUS BEARING SUPPORT	101645	1
C	NEW HEX HEAD CAPSCREWS	104174	8
D	NEW LOCKWASHERS	12781	8
E	NEW BEARING SUPPORT	106459	1
F	RETAINING RING	70575	1
G	PLUG HEX (STANDARD WINCHES)	31386	1
	PLUG FLUSH	24420	1
	SIGHT GLASS (-1 OPTION)	25958	1
G1	O-RING FOR ITEM 44 PLUGS	24186	1
H	RELIEF VALVE	18062	1

PREVIOUS DESIGN



UPDATED DESIGN



⚠ CAUTION ⚠

Make certain the snap ring is installed on the bearing support. This snap ring will keep the output planet carrier correctly positioned in the hoist. Gear train damage may occur if this snap ring is omitted.